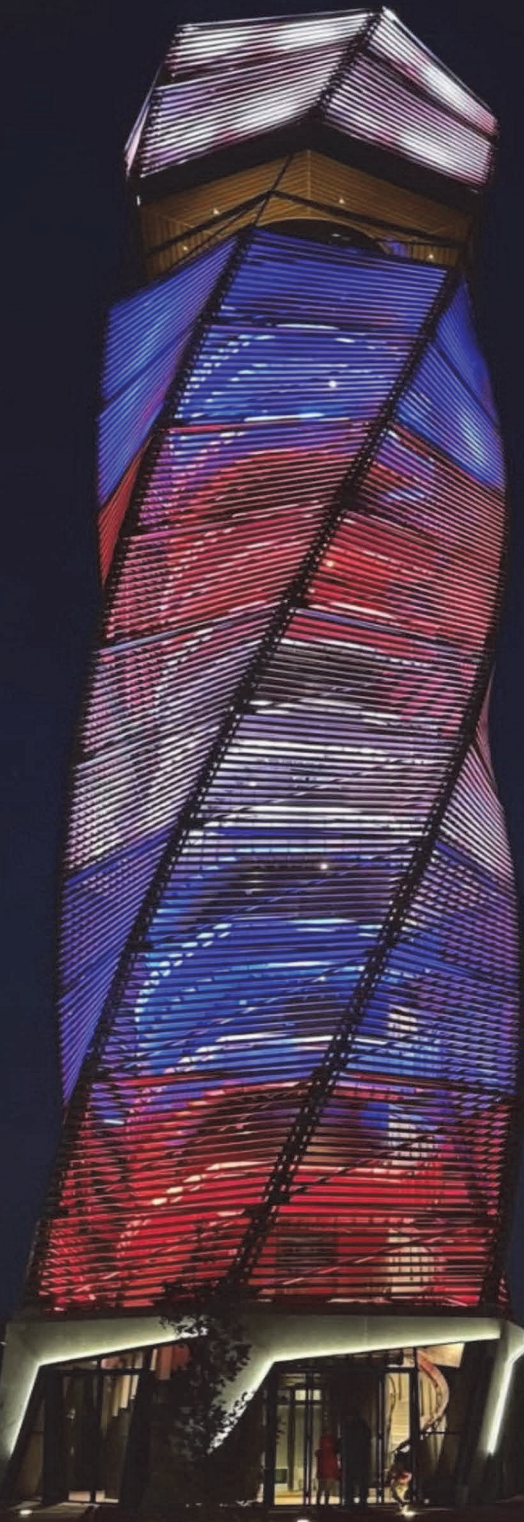




OUTLOOK

NEWS FROM THE WORLD OF SECO



A “Towering” Success: Honoring Heroes Past and Future

INSIDE THIS ISSUE:

**COVER PROJECT FOCUS:
THOMAS AND VIVIAN A. WONG
HONOR TOWER**

LEKOTEK, 2025 CHARITY PARTNER

PLUS LOTS OF SECO NEWS

A Towering Success: Honoring Our Heroes Past and Future

When the **Thomas and Vivian A. Wong Honor Tower** opened on Veterans Day, November 11, 2025, it marked the culmination of Greenville's decade-long transformation of the Reedy River's western edge into Unity Park, a 60-acre civic destination celebrating history, community, and inclusivity. Rising 125 feet into the skyline, the Honor Tower will serve as both a tribute to the first responders and military personnel and a symbol of the city's unity and resilience.

A Tower Born from Vision and Heritage

The Honor Tower stands as the final phase of Unity Park's \$66 million master plan – a project that began with a \$40 million vision and grew in ambition and scale as community partnerships expanded. Approved by the Greenville City Council in June 2022, the tower was designed to create a highly visible focal point for the otherwise level terrain of the park, a structure that would invite residents and visitors alike to look upward in reflection and pride.

The tower was conceived and designed by **Paul Endres of Endrestudio**, an architectural and structural engineering firm with offices in Emeryville, California, and Chicago. Endres' vision was both artistic and symbolic: a **double-helical structure of steel, wood, and aluminum** that evokes movement, connection, and strength. The design draws direct inspiration from Greenville's **textile heritage**, reinterpreting the city's **historic smokestacks and wooden towers** as a modern form of architectural storytelling.

Before commencing design work, Endres, **Mayor Knox White**, and several city officials ascended in a bucket lift to determine the ideal height and vantage point. "The view from way up there is really remarkable," Endres recalled. "We wanted to make something that would be loved by the people of the city."

Design, Structure, and Symbolism

The completed tower collectively weighs approximately **250,000 pounds** and rises about twelve stories, and features a **99-foot-high observation deck** offering panoramic views of downtown Greenville, the Reedy River corridor, and the distant **Blue Ridge Mountains**. Visitors can ascend via a **glass-walled elevator** or climb **176 spiral steps** wrapped around the tower's core in a **stainless-steel double-helix stairway** – a feature crafted by **The Heirloom Companies**, the same artisans responsible for Unity Park's multicolored "UNITY" sign. It should be noted that Harper and all of their subcontract team members worked closely with the design team as design/feasibility and budget all needed to come together.

At night, the tower will become a **beacon**, glowing softly through an outer shell of **six custom steel curved pillars** coated in special black paint. The six pillars represent the diverse groups of **first responders and military veterans** who safeguard the community, while their intertwined design symbolized unity, service, and interdependence.

Mayor White has described the Honor Tower as "not just a tower, but a piece of urban art and design that generations from now will view as a point of pride for Greenville."

Honoring the Past, Building for the Future

The tower's placement carries deep historical meaning. It stands at the former boundary between **Mayberry Park** and **Meadowbrook Park**, two public spaces that were once segregated. In this location, the Honor Tower embodies **Greenville's commitment to inclusion**, and bridging the physical and social divides of the city's past.

At the tower's base, four **themed gardens** offer areas for reflection, tranquility, and remembrance. Each garden was made possible through philanthropic contributions and carries the names and legacies of local families and community leaders:

(continued on page 3)



Tower During Construction



The Lanny Webster Garden, honoring the late chair of the South Carolina Nature Conservancy and featuring her favorite plants – hydrangeas, azaleas, and camellias.

The Noel P. McKissick Garden, celebrating a family with deep civic ties.

The Ahimsa Garden of Peace, donated by the Surendra Family in honor of Surendra and Neelima Jain

The Grand Garden of Hope, contributed by the McCrary Family in honor of January McCrary.

These gardens, along with the **Philips J. Carlton Memorial Plaza** surround the tower with lush plantings and walking paths, inviting quiet moments for reflection.

Community Investment and Philanthropy

The \$11 million Honor Tower structure was funded through a unique blend of **public investment and private donations**. Funding sources break down like this:

Private donations: \$5.5 million

Local Accommodation Tax: \$3.5 million

Hospitality Tax: \$1 million

Unity Park construction savings: \$1 million

The tower reached full funding in **December 2022** when **Vivian Wong** and her late husband **Thomas Wong**, longtime Greenville entrepreneurs and philanthropists originally from Hong Kong, made a **\$1 million** gift to the project. Their generous contribution ensured their names would forever be linked to the symbol of honor and unity.

A Tower for All of Greenville

Beyond its striking beauty, the Honor Tower stands as a **physical, tangible monument to service and community spirit**. It will serve as both a **destination and a symbol** – a place where families can appreciate Greenville’s skyline, reflect on those who serve, and celebrate the city’s ongoing story of renewal.

“The Honor Tower connects the past and the future,” said Endres. “It honors those who built and protected the city while providing a space for future generations to gather and look outward, together.”

The **Thomas and Vivian A. Wong Honor Tower** not only completes the vision of Unity Park but will also illuminate the city’s enduring values – **unity, service, remembrance of history and hope for the future!**

SECO’s Honor Tower Story

SECO’s involvement in the Tower is also remarkable. Early in the design phase of the project, SECO was invited to participate in what amounted to a “design-build” opportunity by Harper General Contractors, SECO’s long-time customer based out of Greenville, SC. Of course, we accepted the invitation, and just like that, SECO was an Honor Tower team member. You might be interested to know that at that time, the tower was not yet officially named, and it was referred to as Unity Tower.

The first Tower-related meeting that SECO attended, early in 2023 was virtual. We had a chance to meet the design team, Design Principal Paul Endres, Project Manager Dave Campbell, and Associate Designer Caleb Schemmel.

Our SECO folks were also introduced to the other primary members of the Tower subcontract team: South Carolina Steel, CAS Steel Erectors, Southern Painting, VT Concrete Construction, and Schindler, the elevator contractor.

Joining the discussion were the hosts from the Harper General Contractor team: David Wise, President and CEO; Brandon Manley, Project Engineer; Neil Wilson, Project Director; Jeremy Conrad, Project Manager; and Wren Moore, Superintendent.

Our team had a chance to hear first-hand what the vision for the tower was and learned what was of paramount importance with regard to the “cladding” of the tower. This is when SECO’s team, led by Bobby Stanfill, first learned that the cladding component that we’d be charged with engineering, designing, fabricating,



SECO’s crew “getting high.”

(continued on page 4)

and installing would be custom twisted, sloped, bladed screen units comprised of special-shaped extruded aluminum “blades”, continuous wooden Garapa infill, hidden supports, and concealed attachments!

Many companies may have been scared off by such a unique and groundbreaking concept, but not SECO! Our team was ready to take on the challenge, and our confidence never wavered that we'd be able to pull it off and be a key member of the success that would ultimately be known as the Honor Tower!

Knowing the design intent, the SECO team developed a preliminary solution for the “twisted” screen units. Each typical unit would be about 16 feet in length and about 10 feet tall. After several discussions with Harper and the design team, we conceived and detailed an initial solution. Before we could build a mock-up, however, we needed to get the shape of the extruded blade detailed and dimensioned such that we could put the order in early as the lead time for custom extrusions is lengthy. After approval, we put a small initial order in, about 1000 ft, as we needed to know that they'd work before ordering the whole project quantity. Our consultant, Andy Bryant of Trinam Design, after consulting with the SECO team, drew up a prototype mock-up unit that we could fabricate at our nearby fabrication plant, ProFab, and ship readily to the jobsite for installation on the first mock-up.

The first mock-up had a few issues that we hadn't anticipated, and the architectural team wasn't fully pleased with the initial effort, but we learned a lot, and the SECO team was only temporarily set back. After several more discussions with the architect, Andy, and our team, we dabbled with attachment methods and fabrication techniques and built a couple more trial assemblies in our own facility. Along the way, the design team selected a metallic copper custom color for the powder-coated extrusions.

We went ahead and ordered the balance of the extrusions and also the exotic Garapa wood, sourced from South America, which would be utilized as the interior facing wooden infill contained within each extrusion.

Andy also devised very clever assembly jigs that were cut on our CNC router per his digital model. These jigs assured the screen units were fabricated at exact angles and dimensions for incredible consistency from blade to blade and unit to unit. The team also conceived of a variable, compound-angle clip system that would securely hold each blade with concealed fasteners to its plate support and also provide the illusion of the blade being twisted. Hence, there are 14 variable clips on the left and 14 variable clips on the right. One side is ascending; the other side is descending.

Andy also designed a very unique vertical rack with the appropriate angles and notches such that we could place the rack on a flatbed and bring as many as four (4) huge, fully assembled units at one time to the jobsite without deforming the units.

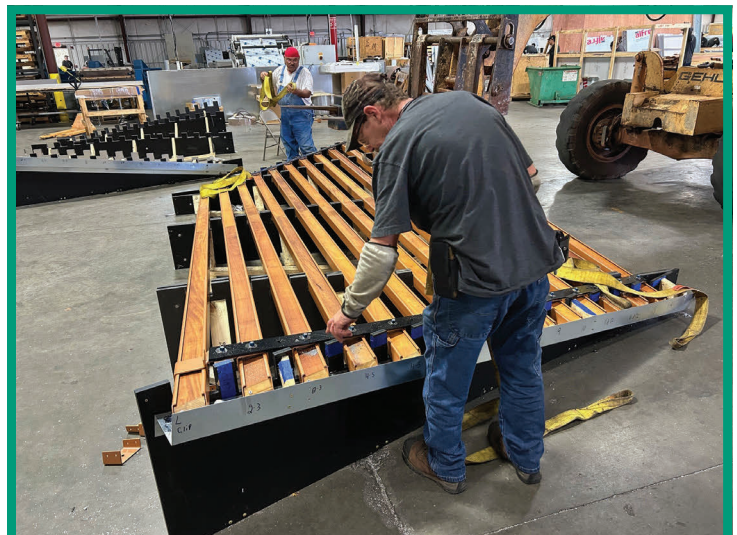
Early this past summer, after much trial and error, effort, innovation, determination, and many virtual meetings, our team assembled and installed a finished prototype that the architect and Harper team approved of.

Now the SECO team was ready to fabricate and assemble the balance of the screens (there were 72 total), but not before Andy conducted a digital scan of the helix steel frame, which enabled Andy to model the structure with exact dimensions and not theoretical ones. It's not hard to imagine that given erection tolerances and varying field conditions, no two frames turned out exactly the same. Hence, each unit was uniquely identified and fabricated by our ProFab team to exact and specific dimensions. Also, for good measure (pun intended), our field team, led by Dennie Neal and Chris Bramlett, field measured each framed opening just to make certain that there would be no unpleasant surprise when it came to installing the units.

Speaking of installation, our field team overseen by Travis Belew, SECO's VP of Construction, did a flawless job installing all of the units on the helix-framed tower. All 72 of the frames fit very well and with exceptional precision.

The fine folks who worked at ProFab on the assembly team were led by Bob Henry. Bob did a great job acting as the information source between the fabrication activity and the field crews. Bob is also the one who made the very critical compound angle cuts through the blades at each end of the units. These cuts had to be perfect, essentially, or the units would not look uniform once installed.

The other “assembly team” members included Tim Lemmons, Larry Roach, Mike Miller, David Brown, and Tony Wilson. In the field, Dennie and Chris were masterfully aided by Tom Siler, Paul (Tony) Osborne, Cory Norton, and Bart King. These guys thought nothing of being as much as 135 feet in the air as they securely drilled and fastened each frame with ½” stainless steel bolts, 10 bolts per unit.



Assembly in the plant.



Chris Bramlett "steering" a unit.

Our field guys completed the installation of all 72 assemblies well in advance of our schedule deadline. Jeremy Conrad, Harper's Project Manager, commended, without solicitation, SECO's fabricators and installers when he said, "They did a fantastic job, and we are extremely pleased with the final result. I'm glad we were able to work through everything together!"

In addition to Jeremy's thoughts, Neil Wilson, Harper's Director of Project Management, shared this statement:

"Once again, the SECO team has been a key partner in bringing another Harper marquee project to a successful finish. Completing the Honor Tower was no small feat, and we extend our sincere thanks to Joe, Bobby, Travis, Bob, and the entire SECO team for the pivotal role they played."

"It is always a pleasure to work with SECO, especially on challenging projects like this.

We know we can count on them to face every challenge as a true team member, ensuring our clients receive a product that meets and exceeds expectations, no matter the level of complexity. Thank you, SECO team, for your dedication and excellence!"

It is difficult to think of something to add to Neil's sincere reflection about how Harper views SECO, but we can say with equal sincerity that we cherish our relationship with Harper and have for 2 ½ decades!

Here is the team that SECO entrusted to execute the Tower Project:

Project Manager:

Bobby Stanfill

Construction Manager:

Travis Belew

Project Engineer:

Paul Roberts

Fabrication Coordinator:

Bob Henry

Crew Foremen:

Dennie Neal and Chris Bramlett

Site Coordinator:

Tom Siler

Installation Team:

Bart King

Tony Osborne

Cory Norton

Engineering Consultant:

Andy Bryant – Trinam

Fabrication Team:

Operations Manager

Josh Mathis

Plant Manager:

Chris Stephens

Tony Wilson

Tim Lemons

David Brown

Mike Miller

Larry Roach



L to R: Bart King, Cory Norton, Tom Siler, Tony Osborne, and Chris Bramlett.

SECO's fabrication division, ProFab Custom Fabricators in Wellford, S.C. continues to grow and grow as their customer base continues to grow. This is due primarily to the success of the material-only group, NovaTech Wall Systems and the distribution division, NDG. This growth has caused the plant to have less and less room to store, stage and fabricate material.

This past Spring, it was decided that the company would build a new office addition to the outside of the plant and subsequently demolish the existing "internal" offices. The space previously occupied by offices would therefore become additional plant space.

The architect, Post Oak Partners out of Cumming, GA was commissioned to perform the design work and things commenced from there. By mid-Summer, SECO had contracted with their best SC customer, Harper General Contractors to build the new office space. By Fall, the work was well underway and as of this writing, the new office space is nearing completion. The building is fully enclosed with storefront and insulated panels, however, very soon the tower feature and the main entrance vestibule will be clad in sleek, crisp silver aluminum composite panels. ProFab's corporate "red" will be utilized on the signage as well as building accents. We'll include some completed project images in the next issue of The SECO Outlook newsletter.



L to R: Logan Parnell-Harper, Chris Stephens-ProFab, Jason Cooke-SECO, Joe Creighton-SECO, Tyler Schipper-Harper, Josh Mathis-ProFab, Ron Haddaway-Post Oak Partners, Architect

Construction underway!



Project Name: ProFab Addition
Location: Wellford, SC
Architect: Post Oak Partners - Mr. Ron Hadaway
General Contractor: Harper General Contractors
Project Manager: Logan Parnell
Project Manager: Tyler Schipper
Project Supervisor: Randy Trudeau
ProFab Managers: Chris Stephens and Josh Mathis

Getting close!



We have definite mixed emotions thinking about Mel Bindas' retirement from SECO. That is, we are very sad that we are saying goodbye to a very talented and very special teammate but at the same time, we couldn't be happier for him that he is moving on to the next chapter in his life!

Mel started in the "cladding business" way back in 1975 when he took a part-time job with a company called Plasteel Products. Mel's first gig was a 1099 detailer of metal wall panels, mainly on large power plants. This was Mel's first "taste" of our business! His professional journey was underway! 1975 was also when Mel met his future wife, Lynn! Upon graduation with an art and architecture degree in-hand, Mel began work with Plasteel as a full-time employee and soon he and Lynn were married. Mel spent the next 4 years working as both a field engineer and a home office engineer. The field engineer position took him out west (Wyoming) where both of his daughters, Bethany and Emily were born. Once back in PA, Mel was recruited by the metal panel giant of the day, Pittsburgh based, H.H. Robertson. Mel was quickly elevated to an estimating manager and eventually the Director of Estimating and Engineering. A pretty heavy responsibility for such a young professional within such a large company! When Robertson later de-centralized, Mel was relocated by the company to the Frankfort, KY plant where he took on the role of Customer Service and Project Management Director. Later on, Mel made the move over to the sales side of the business and became the Sales Manager for the Frankfort operation. It was during this time that Robertson merged with Steelite and E.G. Smith and formed what is now known as Centria.



Mel Bindas at his retirement lunch with Jason Cooke and Joe Creighton.

With the merger complete, Mel and his family opted to not return to the Pittsburgh area. Hence, he went to work for a Kentucky based pre-engineered company and a reinforced fiberglass panel manufacturer. After several years working for these folks, Mel called on a well-known wall panel contractor in Georgia ☺. One thing led to another and soon Mel had joined up with SECO! Mel started out heading up operations at what was SECO's panel manufacturing division at the time, called Altech Panel Systems. Mel served in this role for SECO until about 2011 at which time he joined the SECO contracting side of the business taking on the role of Senior Project Manager. In his time performing in this role, Mel took on SECO's most difficult and challenging projects and never failed to bring home a successful project! Our customers loved working with Mel and many of them would request that we assign Project Management duties to Mel on their particular projects!

Now that Mel has retired from the demands and obligations of the contracting world, he has been freed up to do things that he loves, mainly spending more quality time with his daughters and their families. Mel is fortunate to have two quality son-in-laws, Mike and John. Mel is also blessed to have 5 grandkids; Maddie, soon headed to UGA, Micah, who loves to fish, Moses, who loves sports, Annabelle, who loves to read and Emmalyn, who loves crafts.

Who knows, maybe there's a future wall panel expert in the bunch? We mentioned earlier that Mel is a talented and very experienced expert in our field of wall cladding systems. The truth is, there is not likely anyone in America who possesses the knowledge that Mel Bindas has about our wall system world! Mel was AI before there was an AI! His knowledge and experience simply cannot be replaced. His talent is not something that can be duplicated. On top of all this unmatched technical expertise, he is simply a great God-fearing man who plays a mean guitar! We will miss him! Mel, we all wish you and Lynn the very best!

SECO's Team Member Milestones

10 YEARS OR LESS

0 to 5 Years

Brayan Ariza Pena
Caleb Bixler
Samir Contreras Cardenas
David Davis
Chris Henderson
Daniel Marrero Davila
Carlos Montilla Adans
Jesus Mora Varela
Ruben Prieto

0 to 5 Years (con't)

Ruben Prieto Alvarez
Laura Riviere
Alberto Suarez Torrealba
Chris Wilson
Craig Wren
Travis Armour
Justin Crawford
Steve Fudge
Mike Miller

0 to 5 Years (con't)

Oscar Osorio Carmona
Dallas Roberts
Paul Roberts
Eric Simonsen
Tyquan Yeargin
Jon Nichols
Chris Bramlett
Kelly Compton
Josh Mathis

6 to 10 Years

Samuel Brown
Hermas De Leon Ramos
David Cake
Chris Ward
Paul Bott
Cory Norton
Tim Lemmons

11 YEARS OR MORE

11 to 15 Years

David Brown
J.J. Derman
Deno Brown
Bob Henry
Doug McIntyre
Tony Wilson

16 to 25 Years

Larry Roach
Chris Stephens
Sam Mooney
Tommy Siler
Dianna Mitchell
Bobby Stanfill

16 to 25 Years (con't)

Travis Belew
Jason Cooke
Joe Creighton
Mitchell Terry

26 to 30+ Years

Bart King
Paul Osborne
Cecil Landress

SECO appreciates all of our hard-working employees!

Meet Eric Simonsen— Connecting People, Projects, and Possibility with Zinc

Born in Arizona to an Air Force family, Eric Simonsen spent his early years moving from place to place — from the deserts of the Southwest to Germany and then Illinois — before his family ultimately landed in Peachtree City, Georgia, the place he still calls home. After graduating from the University of Georgia (Go Dawgs!), Eric’s creative roots as a scientific illustrator, graphic designer, and sculptural artist led him on an unexpected but fitting path into the world of architectural metals.

Right out of college, he joined a small startup family business in the fabrication industry, helping it grow from a modest toll-forming shop into a respected manufacturer of high-end architectural metal systems. It was there that Eric discovered how naturally his artistic eye and scientific attention to detail translated to the built environment. The precision, creativity, and problem-solving skills that defined his art now fuel his approach to collaborating with designers, engineers, fabricators, and installers on complex building envelope projects.

Today, as head of NDG, Eric channels that same energy and passion into advancing the use of architectural zinc across North America. He’s particularly drawn to zinc’s natural, living quality — the way its protective patina continually evolves over time, becoming part of a building’s story while shielding it from the elements. “I love that zinc is never static,” he says. “It changes and grows, just like we do.”

Outside of work, Eric’s creative side finds another outlet in stone sculpture, a labor-intensive craft that demands patience, precision, and deep focus. “It’s one of the few things that lets me truly lose myself in the process,” he says. “It’s physical, it’s demanding — but it’s incredibly rewarding.”

Eric also values the relationships he’s built within the industry, especially with his partners and friends at eZinc. Above all, however, is his drive rooted in family — his wife Eleanor, their three kids Paul (12), Owen (11), and Anna (8), and their black lab Brookie. A self-described private person, Eric prefers to keep the spotlight on his work and the people around him, but those who know him well describe him as someone who loves deeply, gives back generously, and takes pride in creating beautiful, lasting things.



L to R: Owen, Anna, Eric, Eleanor, Paul

NDG AND THE FUTURE OF ARCHITECTURAL ZINC IN NORTH AMERICA

In an industry defined by durability, precision, and design vision, NDG (NovaTech Distribution Group) is helping redefine how architectural zinc reaches projects across North America. As the authorized U.S. distribution partner for eZinc®, one of the world’s most respected producers of architectural zinc sheet and coil, NDG is focused on more than just supply — we’re committed to enabling the success of every fabricator, installer, and architect we serve.

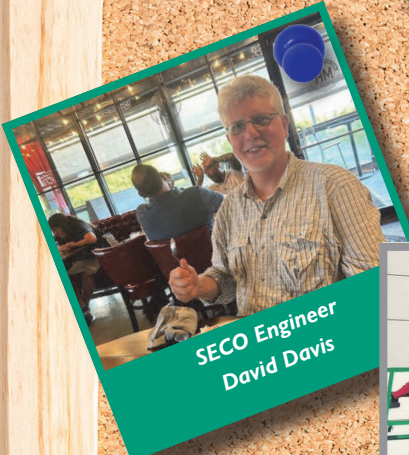
At the core of NDG’s mission is a simple idea: make premium European zinc more accessible, reliable, and project-ready than ever before. We do this through a combination of domestic inventory — by stocking material in our South Carolina warehouse — and offering industry-leading lead times on project-specific orders directly from Spain, typically arriving in just 8–10 weeks. That combination of availability and agility allows us to support projects ranging from residential cladding to complex commercial roofing with speed and confidence.

But NDG’s role extends beyond logistics. We see ourselves as a true partner to the industry — providing technical support, sharing best practices, and collaborating early in the design phase to ensure every zinc installation achieves its full potential. Our team works closely with fabricators and installers to navigate the unique nuances of zinc, from patina evolution to detail design, helping bridge the gap between architectural intent and field execution.

As the demand for sustainable, low-maintenance building materials continues to rise, architectural zinc is poised for significant growth in North America. NDG’s mission is to accelerate that growth — not just by delivering exceptional material, but by building relationships, sharing expertise, and standing behind all zinc material that leaves the warehouse.



SECO FAMILY FACES



**SECO Engineer
David Davis**



Bart King at Ritedose.

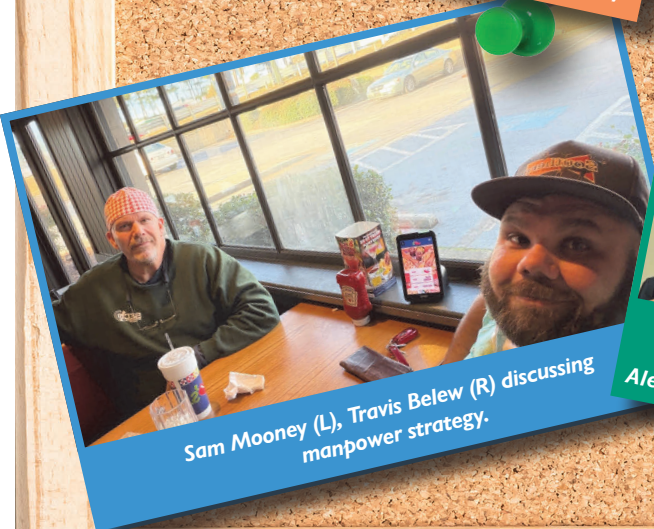
Davis Roberts
Paul Roberts, SECO's Engineering Manager has reported that his son Davis, (24) was recently promoted to Staff Sergeant. After stops in San Antonio, Wichita Falls and Goldsboro, NC, he was assigned to a base in Suffolk, England, about 80 miles NE of London. He oversees aircraft maintenance and helps keep F-15's in tip-top shape! Additionally he is working on a degree from the University of Cambridge.
Paul is deservingly proud of this young man and Paul so too are we!



Cecil Landress and wife Linda from 1977 and then again today!



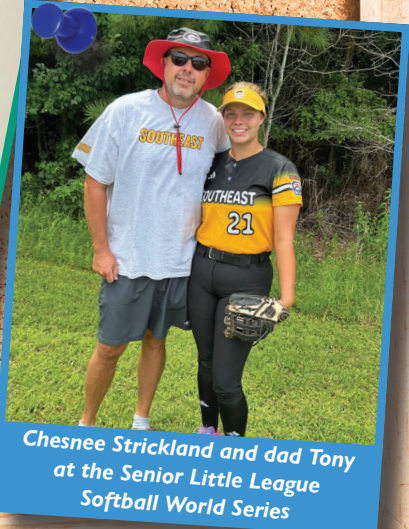
Cecil (middle) with grandson Brixton (L) and son John (R)



Sam Mooney (L), Travis Belew (R) discussing manpower strategy.



Joe Creighton's son Mickey with newborn grandson Daniel Alexander Creighton, born 8/26/25.



Chesnee Strickland and dad Tony at the Senior Little League Softball World Series

Introducing Laura Riviere, SECO's Purchasing Manager

SECO has a new Accounting Admin person who also serves as our purchasing agent, and we'd like for you to meet her. Laura Riviere is a rarity in that she's a native Georgian! She was born in Atlanta, but grew up in Brookhaven, living there throughout her school age years. She was "the baby" of her family with 2 older brothers and 1 older sister. Her father was a Deacon, so it's not surprising that much of Laura's childhood was spent in church and doing church related activities with family and friends. She even played on the church softball team for a number of years and enjoyed that. She recalls playing with Barbies, playing on the swingsets and playing with the family dogs. She did mention that some of her fondest childhood memories are of the family camping trips. Her mom and dad loved to pile the kids in the car and head out to their favorite Tennessee campground. She graduated from high school in '89 as a Cross Key High School Indian. Laura's mom was a math teacher and Laura enjoyed math and was good at it, but her favorite subject was English. During school, Laura got some "real life" exposure as she took part in a work-study program where she worked part-time with a recruiting firm. Eventually, Laura enrolled at Georgia State University with a focus on Business Studies. She graduated in '95 with a Business Management degree. Upon graduation, Laura went to work for a pet supply company where she worked in the areas of H.R. and Accounts Payable. This is where Laura met her first professional mentor, Scott Morrison. During her employment there, Mr. Morrison helped Laura expand professionally. After 7 years, Mr. Morrison moved on to help start up several small companies and Laura followed him, twice over the years, enhancing her professional expertise and capabilities. Most of these subsequent positions were accounting related and allowed her to keep honing her skills.



Laura Riviere (R) and daughter Forest.

Along the way, Laura got married and in 2006, her daughter Sienna was born. Sienna grew to love nature and spends a lot of her time enjoying the great outdoors. So much so, in fact, that her family and friends refer to her as Forest! Sienna is now a sophomore at UGA and is studying Cognitive Science and Logistics. When she graduates, she sees herself working as a speech therapist.

Although Scott Morrison continues to be Laura's primary professional mentor, she did choose to leave her accounting career behind in 2016. She didn't know yet that she'd eventually return to accounting! Soon after leaving her accounting gig, Laura made the jump to a nearby restaurant where she could work part-time and be at home more with Sienna and the family dog.

While working for the restaurant, Laura learned the ins and outs of the food service world and became a very valued member of the staff. During this time, Laura came to know some of the SECO management team. It was not uncommon that SECO folks would frequent the restaurant as it was not far from the SECO main office.

When Laura became aware that SECO was on the "lookout" for additional accounting talent, she started considering a move, after 8 years in the restaurant business back to an accounting role. One thing led to another and in the Spring of '25, Laura joined the SECO family coming aboard as SECO's Accounting Administrator, reporting to our Controller, Dianna Mitchell.

Laura will tell you that her life is not just about business, however, as she is a faithful UGA "Dawgs" follower while Jason, her boyfriend is a GT follower! She cheers on those Dawgs any chance she gets! Both are sports fans in general, however, and they root for the local teams, especially the Braves!

Of course, having been in the restaurant world for a good while, Laura knows good food and where to find it! She enjoys good food but especially enjoys good Mexican fare and good Thai cuisine. Her secret favorite, however, is a well-executed frittata! She likes the movies, especially thrillers and comedies. Her favorite TV show at the moment is a Netflix series called the Diplomat. When it comes time to relax, Laura will listen to some good music, (she likes most kinds of music) and enjoys getting caught up in a good fictional mystery novel.

As for her job at SECO, Laura fits right into the family. She mentions that she enjoys the easy going "family atmosphere" of the company and she truly feels like she's part of a team. We hope Laura is a part of the SECO team for many years to come!

THE LIGHTER SIDE – POINTS TO PONDER

- A new crew member assumed that the glass contractor was also a baker as he heard they did glass and glazing.
- How about the avid bird watcher on the crew who brought binoculars to the job as he heard there was a crane somewhere on-site!
- Why do welders have so many friends? They are excellent at bonding. ☺
- The confused new super thought that the job 'trailer' would show previews of an upcoming project.
- Wouldn't it be appropriate to refer to an average superintendent as a sosointendent?

Meet Chris Henderson, NovaTech's Engineering Manager

Please let us introduce you folks to our Mr. Chris Henderson. A native Georgian, Chris grew up in the Sugar Hill and Buford area. His parents, Doyle and Kathy, raised Chris and his younger brother Stephen in the days when the Buford area was much more rural than it is now!

Chris started his formal schooling at Sugar Hill Elementary and then went on to Lanier Middle School followed by North Gwinnett High School. As a young guy, Chris really enjoyed being in the Boy Scouts where his love for the outdoors really showed.

Chris is close to both his mom and dad, but he was definitely heavily influenced by the senior men in his family. Chris speaks fondly of his two granddads and the time that the two men would spend with young Chris. Papa (Grandpa Henderson) had a farm where he raised cattle, chickens and horses. (This is where Chris's love of horses first germinated). Chris loved visiting "the farm"! Papa Bryant, Chris's other grandpa was a master builder, skilled in plumbing, electrical work and carpentry. Chris says he learned a lot of valuable life lessons from both of these mentors.

During high school is when Chris was first exposed to higher level math and drafting. This then led to his interest in problem solving and engineering. Chris received some further real-life technical training while in high school by working part-time in his dad's cabinet shop. Chris graduated from high school in 1999 and soon after took his first "real paying job" at National Tire and Battery. Chris was multi-dimensional there at NTB, and he describes his position as a "tire slinger" but worked his way up to inventory manager. Also, soon after high school, Chris became a dad, which he mentions sped up his maturation quite a bit.

Chris took on a couple more jobs as time went on, working as a car detailer and a valet parking manager. About this time, Chris still in his early 20's knew he had to get serious about his career. Hence, he went to work full-time at his father's cabinet shop spending 5 years there learning the trade and then 5 more years at another cabinet shop. With these 10 years of cabinet making experience in hand, his brother presented Chris with an opportunity to come work with him at a wall panel manufacturing company. Chris started out as a C and C router operator. It didn't take long for Chris to advance to director of the company's C and C operation. During this time, Chris was exposed to computer programming and engineering. Over time, Chris self-taught himself a variety of different programming software. Soon, Chris was heading up the engineering department and did so for 12 years.

Paul Bott, who at the time had been with SECO's engineering department for 6 1/2 years was formerly employed with Chris's employer. Paul was instrumental in having Chris choose to "saddle-up" with the SECO team. Not long after that, Chris did indeed come aboard at SECO, joining the SECO family as the Engineering Manager for SECO's material-only division, NovaTech Wall Systems.

Chris is happily married to his wife, Maria, and they live in close by Auburn, GA. Chris has 5 children, Mayson (25), Corey (22), Henry (21), Ryan (17), and Ivie (15). Two of Chris's boys, Mayson and Henry have both had cancer battles in their young lives. Mayson was diagnosed with Burkitt's Lymphoma when he was only 13 and had to go through aggressive, extreme chemo treatment along with several surgeries. Henry was diagnosed with Hodgkins Lymphoma and also went through intensive chemo treatment. Thanks be to God, both boys, appear to be out of the woods and their treatments have been a wonderful success!

On the home front, Chris and Maria root for the UGA Bulldogs. Both like to cook but Chris says he prefers eating to cooking! Without hesitation, he says steak is easily his favorite food! They are spiritual folks and they do enjoy praying together. When it comes to free time and hobbies, Chris enjoys woodworking, with a special interest in crafting furniture and various home projects. Chris also has an affinity for horses and derives great satisfaction from training horses.

However, Chris has an extremely unique hobby that will require more space than we have here. We will focus on that unique hobby in a future article. It's quite remarkable.

We are very pleased to have Chris on board and we look forward to a long-lasting relationship!



Chris Henderson and wife Maria

THE LIGHTER SIDE

Why are drill bits a lot like one's boorish relative?
Eventually, they all become dull and useless.

What's it called when a foreman lets a trainee go?
A crewcut.

What is it called when two caulkers get into a heated argument?
Caulk fighting.

Why are HVAC workers always the least intelligent folks on the job?
They are air heads!

What do you call the backhoe operator who quits?
An ex-cavator.

Why are electrical guys always so up on things?
They work hard at keeping current!

Why did the young field trainee want so bad to go up in the manlift?
It was on his bucket list.

Why did the architect turn down the wood-grain color sample submittal?
Turns out he likes going "against the grain".

Why did the apprentice keep checking his mailbox?
He was told that all employees would be getting background checks.

Lekotek

As many of you know, SECO teamed up with Lekotek of Georgia as our fundraising beneficiary for the calendar year 2025.

Back in October, we held a charity outing at the beautiful Brookstone Country Club in Acworth GA. We had a full course that day and although the weather was threatening, the rain held off and we had a very nice event. We raised a good amount of money for Lekotek that day and all had a great time!

The wonderful golf event was followed up by our clay shoot fundraiser on December 5th which was held at the iconic Old Hudson Plantation in Sparta, GA. Unlike the golf outing in October, the rain did not hold off and it rained all day long! Fortunately, the turnout was still quite good, and all attendees stayed pretty dry. The facility features a large covered and heated pavilion, and all the shooting stations are likewise covered. Helene Prokesch, Lekotek’s founder and director attended both events and spoke to both groups about the good things Lekotek does and how they help not just the children with the disabilities, but how they also help the families of the young people learn to supplement the efforts of the Lekotek staff. In fact, she said, Lekotek becomes a true part of each child’s family. It’s very much a team effort!

We wish to thank all who helped put on these two successful events for the benefit of the Lekotek organization. Many, many hours were put in by a whole bunch of folks to make everything run smoothly, but of course, nobody minded. All that effort is simply defined as a “labor of love”! We want to send out a huge “Thank You” to all our sponsors, donors and benefactors! You are all awesome! All in, after all costs and expenses, we were able to hand Helene a check for over \$37,000! Nice work SECO folks!



A shooter takes aim!



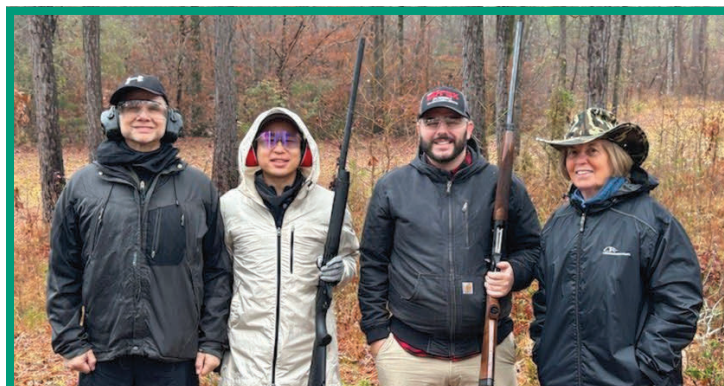
L to R: Chris Wilson, JJ Derman, Eric Simonsen, and Chris Henderson.



L to R: Neil Porter, Doug Holland (Innovative Structures), Robert Bentivegna (Real Floors Commercial), and Helene Prokesch from Lekotek.



“Birdie” has no chance!



L to R: Samuel Chastain, Paul Chung, Matt Ohnsman (Alfrex), and Lekotek’s Helene Prokesch

As per usual, the SECO contracting team is all over the southeast performing their customary incredible work! As '25 has come to an end and '26 is underway, here's a quick snapshot of some of the current jobsites where we are "doing what we do"! :)



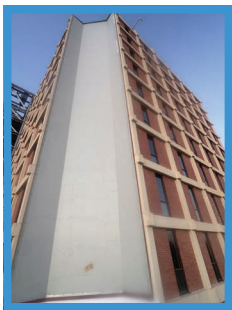
DOBBS JOHN DEERE FACILITY

SPARTANBURG, SC

When the Dobbs John Deere facility in Spartanburg, SC was in need of an entrance area "face lift", they chose our great customer, Harper General Contractors as their G.C. Not surprisingly, Harper then selected SECO as the sub-contractor of choice to perform the architectural metal panel work on the new, free standing 2-story entrance feature. This work involved furnishing and installing the necessary sub-furring over the structure's primary frame and then approximately 3000 sf of sleek, new aluminum composite panels custom fabricated by our ProFab fabrication group. **Deno Brown** along with **Sam Brown** and **Hermas Ramos** did an outstanding job and the Harper team, as usual, is quite pleased with SECO's performance!

LEVER HALL AT CLEMSON UNIVERSITY

CLEMSON, SC



Clemson University continues on with their initiative to update, modernize and re-clad their "triple" student housing towers, Byrnes Hall, Manning Hall and Lever Hall. The three towers are not quite identical, but very close to being so! Byrnes Hall and Manning Hall are complete, (See the Manning photos in this issue), while the Lever tower is just getting underway. **Tony Strickland** and his guys are geared up to start putting panels up on this latest building. When complete, the Lever Tower, like each of the other two towers, will feature about 13,000 sf of new Centria insulated panels (both vertical and horizontal) and some aluminum composite panels at the top of the newly added elevator tower. Our customer, Juneau Construction Company has been very pleased with our performance on the first two towers and of course, we expect them to be equally pleased when tower 3 is completed!

GREENVILLE'S DOWNTOWN PEACE CENTER

GREENVILLE, SC

Harper General Contractors awarded SECO five separate contracts to execute the wall panel work related to the different, separate components that together, make up the Peace Center located in downtown Greenville, SC. As there were separate and different components on the Peace Center, each component involved different materials. **Dennie Neal**, aided by **Bart King**, **Tony Osborne**, and **Tom Siler** installed several thousand square feet of aluminum composite panels, a good bit of profiled panels, louvers and even a vision screen as part of the overall work scope.



The Peace Center is a historical and iconic landmark in downtown Greenville, with all of the recent additions, modifications and improvements, the center is well positioned to remain a first-class public facility for decades to come SECO is proud to have been a part of it!

DEPARTMENT OF INTELLECTUAL AND DEVELOPMENTAL DISABILITIES (DIDD)

TUSCULUM, TN



The State of Tennessee's Department of Intellectual and Developmental Disabilities was in need of a new campus for their Tusculum, TN headquarters. The state commissioned Thompson and Litton Architecture in collaboration with Bauer-Askew Architecture to design this new multi-building campus for this important state entity. There are two major buildings, (each with large wings) and a central "silo core building" which is essentially a circular connector. The designers chose to clad these



new buildings with a combination of materials like brick, glass, and two primary metal panel types; aluminum composite panels and concealed fastener "wood-look" panels utilized as both soffits and wall panels. Altogether, the design calls for about 13,000 sf of aluminum composite panels, primarily located at entrances and fascias and another 22,000 sf of the wood-look panels in a rainscreen application. Once again, Tony Strickland and his crew are on the job and doing excellent work. The project is not without challenges as the schedule is tight and there are some atypical site issues, however, the SECO team is definitely up to the task! **Steve Fudge** is handling the administrative duties and bringing his experience to bear in making certain that our customer, Messer Construction has all expectations met.

(Continued on page 14)

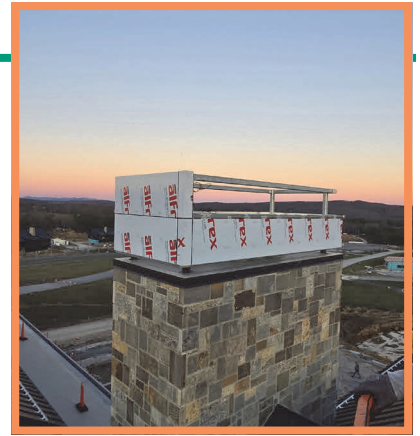
FLATROCK MOTOR CLUB

WESTEL, TN



SECO's team was awarded a unique project by Christman Construction, out of their Knoxville office. Once again, **Steve Fudge** is orchestrating SECO's efforts on this project and, of course, doing his usual exceptional performance.

The motor club is set in the picturesque Cumberland Plateau in rural Middle Tennessee but is close to metropolitan areas like Knoxville and Nashville. Think of an exclusive, private golf country club with first class amenities and lodging, but for driving/racing enthusiasts versus golfers!



The club includes a 3.5-mile track for drivers to hone skills, try out vehicles, test performance and even receive private driving lessons! It's a club like no other!

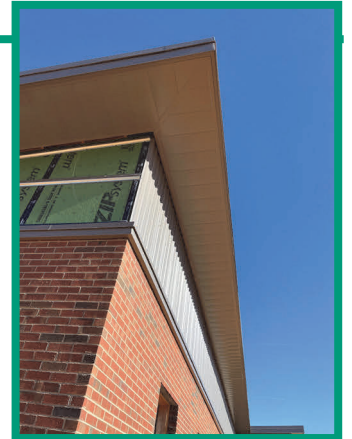
SECO's scope involves engineering, fabricating and installing about 8000 sf of custom aluminum composite panels. This project includes mostly exterior work, but there is a small interior scope as well. There are even two large exterior chimney stack shrouds which are frankly, a first for SECO! The installation work is being deftly handled by **Juan Melgar** and his talented team of guys!

SHAWS CREEK WATER TREATMENT FACILITY

AIKEN, SC



SECO's team recently wrapped up work at the new Shaws Creek Water Treatment facility in Aiken, SC. The scope involved furnishing and installing about 3000 sf of metal panels utilized as soffits and insulated wall panels. **Chris Bramlett** and **Cory Norton** performed the lion's share of the installation work at the direction of our customer, Harper General Contractors - Environmental Division. This was a small project, but was well executed and the customer and owner are quite pleased with the final result!



McGHEE-TYSON AIRPORT

ALCOA, TN



Knoxville's one and only major airport, McGhee-Tyson Int'l Airport located south of Knoxville, Tennessee in an area called Alcoa, TN is undergoing a bit of a facelift. The existing terminal building was built in the 1970's with a Tennessee stone veneer on the exterior walls, columns and features along with an aluminum storefront and glass curtainwalls. The owner, Metro Knoxville Airport Authority (M.K.A.A.) is out to improve not just the appearance of the building, but to also improve weather protection and reduce energy consumption.

This is where SECO comes in! Messer Construction Company awarded the new metal wall scope to SECO, as they knew the scope would be tricky and require exceptional experience and capability.

The owner and architect have opted to remove much of the low-performance stone veneer with modern, aluminum composite panels systems as part of a state-of-the-art insulated rainscreen system. The two main "ends" of the terminal and much of the

entrance side of the terminal are already re-clad and the new panels look great!



There is about 13,000 sf of new panel area altogether with likely more to come on future renovations. These panels are engineered by the SECO team led by Paul Roberts and fabricated by our super team at ProFab. Working at an operating airport is never easy, but Chad McCoy and Chris Coleman and their crews have made it look easy! Congrats to **Steve Fudge**, SECO's project manager and all who have taken part. No doubt this will be another Messer/SECO success story!

(Continued on page 15)

TENNESSEE TECH FOOTBALL STADIUM RENOVATION

COOKEVILLE, TN



The Golden Eagles of Tennessee Tech are on the rise in the world of college football. As such, tickets to games are not the easiest to come by. Their football venue, Tucker Stadium was in need of updating and modernizing. Improvements were needed everywhere! The school, the alumni, the athletic department, the architect, and the general contractor are all of the same mind, and they have a collective mission. That is, they are out to put a new face on the football program and improve the game experience for fans and the community! Wold Architects, primarily focused on the west side of the stadium selected a variety of cladding elements to create a stunning new structure that incorporates texture and color that the prior, 60 plus year old facility lacked. They have called for a mix of insulated panels, profiled horizontal panels, perforated materials and aluminum composite panels.

Altogether there is a total of about 35,000 sf of metal panel work included on the new structure. The Christman Company,

the project's general contractor, was aware of SECO's history working on stadiums, both new and renovation and had high confidence that we could take on the project and help them to deliver a first-class facility to the owner.

Once again, **Steve Fudge**, our project manager is assuring that the SECO team meets all of our obligations and the customer's expectations. **Chris Coleman** and his experienced team are handling the installation duties.



PROJECT PIX

KUBOTA HEADQUARTERS

GAINESVILLE, GA



More pix on back page →

CLEMSON MANNING HALL

CLEMSON, SC



LOCKHEED WELCOME CENTER

NEAR GREENVILLE, SC



TIMMONS ARENA AT FURMAN UNIVERSITY

GREENVILLE, SC



47
VOLUME

SECO is celebrating 37 years in business!

3685 Hewatt Court, Suite E Snellville, GA 30039 • P: 770-469-8286 • SECOINC.BIZ

