

1 WEATHER RESISTANT & COLOR STABILITY

Thanks to its EBC finish, UV exposure, environmental contaminants and moisture have little effect on the panel's surface. Along with a long track record of proven performance, accelerated weathering tests are a measure of a product's performance. According to the Florida exposure cycle tests, an industry accepted method for evaluating surface finishes at high UV and moisture exposure, Trespa® Meteor® panels rank at high classifications for UV-resistance color stability and surface integrity.



2 SUSTAINABILITY

Trespa® Meteor® panels are perfect for use in innovative and functional ventilated façade systems with energy efficient, long-lasting properties. The panels can be incorporated into a rain screen façade assembly that is designed to meet applicable energy code requirements. To further support sustainable objectives, the entire Trespa® Meteor® product range is now available with PEFC™ or FSC™ certification upon request*, for projects seeking LEED credits.

**Available in restricted quantities and in certain jurisdictions.*



3 LOW MAINTENANCE & EASY TO CLEAN

Trespa® Meteor®'s integrated EBC finish results in an extremely durable panel - no refinishing or repolishing required. The closed surface limits dirt accumulation, keeping the panel surface smooth and easy to clean. Contaminants such as soot, crayon, graffiti can usually be removed if properly treated according to the Trespa cleaning and maintenance instructions (trespa.info).



Railway | Poland

5 AESTHETICS & DESIGN FREEDOM

Trespa® Meteor® offers a wide selection of colors and finishes, which make Trespa® Meteor® a top choice for architects around the world. Our design team is passionately devoted to innovating creative and durable solutions for the many unique challenges of facade cladding design today. The panels can be used on their own, or in combination with other materials, to create façades or features that provide a more modern and unique appearance, while enhancing the overall building performance. The latest Trespa® Meteor® Matt finish now gives you the option to create designs with a natural wood or stone look.



Miabsa Office | Spain

4 EASY TO WORK WITH

Trespa® Meteor® panels arrive at the jobsite pre-cut and pre-drilled according to each building's unique design, allowing for quick and effective installation by trained installers. Facade systems are pre-engineered, ensuring the architect and building owner realize the look and performance they desire. The panels have very good compressive and tensile strength and excellent impact resistance.

LOOKING FOR RECLADDING SOLUTIONS?

GO TO TRESPA.COM OR CONTACT YOUR LOCAL SALES REPRESENTATIVE

CONTACT US

TRESPA INTERNATIONAL B.V.
P.O. Box 110, 6000 AC Weert
Wetering 20, 6002 SM Weert
The Netherlands
www.trespa.com

TRESPA NORTH AMERICA LTD.
62 Greene Street (Ground Floor)
New York, NY 10012
United States of America
Tel: +1 800 487-3772
Fax: +1 866 298 3499
Info.NorthAmerica@Trespa.com

TRESPA UK LTD.
35 Calthorpe Road
Edgbaston
Birmingham, B15 1TS
United Kingdom
Tel: 0808-2340268
Fax: 0808-2341377
Info.UK@Trespa.com

VISIT US

TRESPA DESIGN CENTRE NEW YORK
62 Greene Street (Ground Floor)
New York, NY 10012
United States of America
Tel: +1 212 334 6888
Fax: +1 866 298 3499
TDC.NewYork@Trespa.com
www.trespa.com/us/tdc

TRESPA DESIGN CENTRE WEERT
Wetering 20
6002 SM Weert
The Netherlands
Tel: +31 (0) 495 458 845
TDC.Weert@Trespa.com
www.trespa.com/us/tdc

TRESPA DESIGN CENTRE BARCELONA
Calle Ribera 5,
08003 Barcelona
Spain
Tel: +34 (0) 93 295 4193
Fax: +34 (0) 93 116 3300
TDC.Barcelona@Trespa.com
www.trespa.com/us/tdc

TRESPA DESIGN CENTRE SANTIAGO
Eliodoro Yáñez 2831
Torre A - Local 1
Providencia, Santiago
Chile
Tel: +56 2 4069990
TDC.Santiago@Trespa.com
www.trespa.com/us/tdc

DISCLAIMER

GENERAL

These terms apply to the use of this document and such use automatically means that the other party agrees to these terms. The information provided by Trespa International B.V. ("Trespa") in this document is solely indicative. Trespa is unable to warrant the accuracy and completeness of this information. Trespa may change the information included in this document at any time and without further notice. Trespa's customers and third parties must ascertain that they have the most recent document (for the most recent version, please consult: www.trespa.com). No rights can be derived from the information provided; the use of the information is at the other party's risk and responsibility. Trespa does not warrant that the information in this document is suitable for the purpose for which it is consulted by the other party. This document does not contain any design, structural calculation, estimate or other warranty or representation that customers and third parties may rely on. This document does not guarantee any properties of Trespa products. Colors used in Trespa's communications (including but not limited to printed matter) and in samples of Trespa's products may differ from the colors of the Trespa products to be supplied. Samples are not intended for use in product tests and are

not representative of characteristics of the Trespa products. Trespa's products and samples are produced within the specified color tolerances and the colors (of production batches) may differ, even if the same color is used. The viewing angle also influences the color perception. Metallic panels feature a surface whose color appears to change based on the direction from which it is viewed. The specified color stability and color specifications relate only to the decorative surface of the Trespa products, not to the core material and samples of the Trespa products. Trespa products are delivered ex-works with straight, sawn sides. Customers and third parties must have a professional adviser inform them about (the suitability of) the Trespa products for all desired applications and about applicable laws and regulations. Trespa does not warrant the above. The most recent version of the current delivery program and the Material Properties Datasheet can be found at www.trespa.info. Only the information in the most recent and valid Material Properties Datasheet should be used to select and provide advice regarding Trespa products. Trespa reserves the right to change (the specifications for) its products without prior notice.

LIABILITY

Trespa is not liable (neither contractual nor

non-contractual) for any damage arising from or related to the use of this document, except if and to the extent that such damage is the result of willful misconduct or gross negligence on the part of Trespa and/or its management. The limitation of liability applies to all parties affiliated with Trespa, including but not limited to its officers, directors, employees, affiliated enterprises, suppliers, distributors, agents, and representatives.

GENERAL CONDITIONS

All oral and written statements, offers, quotations, sales, supplies, deliveries and/or agreements and all related activities of Trespa are governed by the Trespa General Terms and Conditions of Sale (*Algemene verkoopvoorwaarden Trespa International B.V.*) filed with the Chamber of Commerce and Industry for Noord- en Midden-Limburg in Venlo (NL) on 11 April 2007 under number 24270677, which can be found on and downloaded from the Trespa website, www.trespa.com/documentation. All oral and written statements, offers, quotations, sales, supplies, deliveries and/or agreements and all related work of Trespa North America, Ltd. are governed by the Trespa North America General Terms and Conditions of Sale, which can be found on and downloaded from the Trespa website, www.trespa.com/documentation.

A copy of these general conditions of sale will be provided free of charge on request. All general terms and conditions other than the conditions mentioned above are dismissed and do not apply, regardless of whether such terms and conditions are referred to on requests for offers, offer confirmations, stationery and/or other documents of the other party, even if Trespa does not expressly object to such terms and conditions

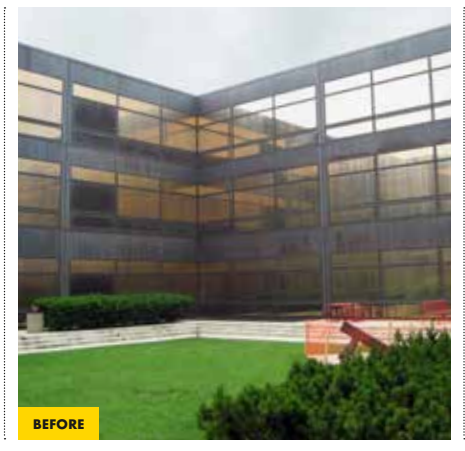
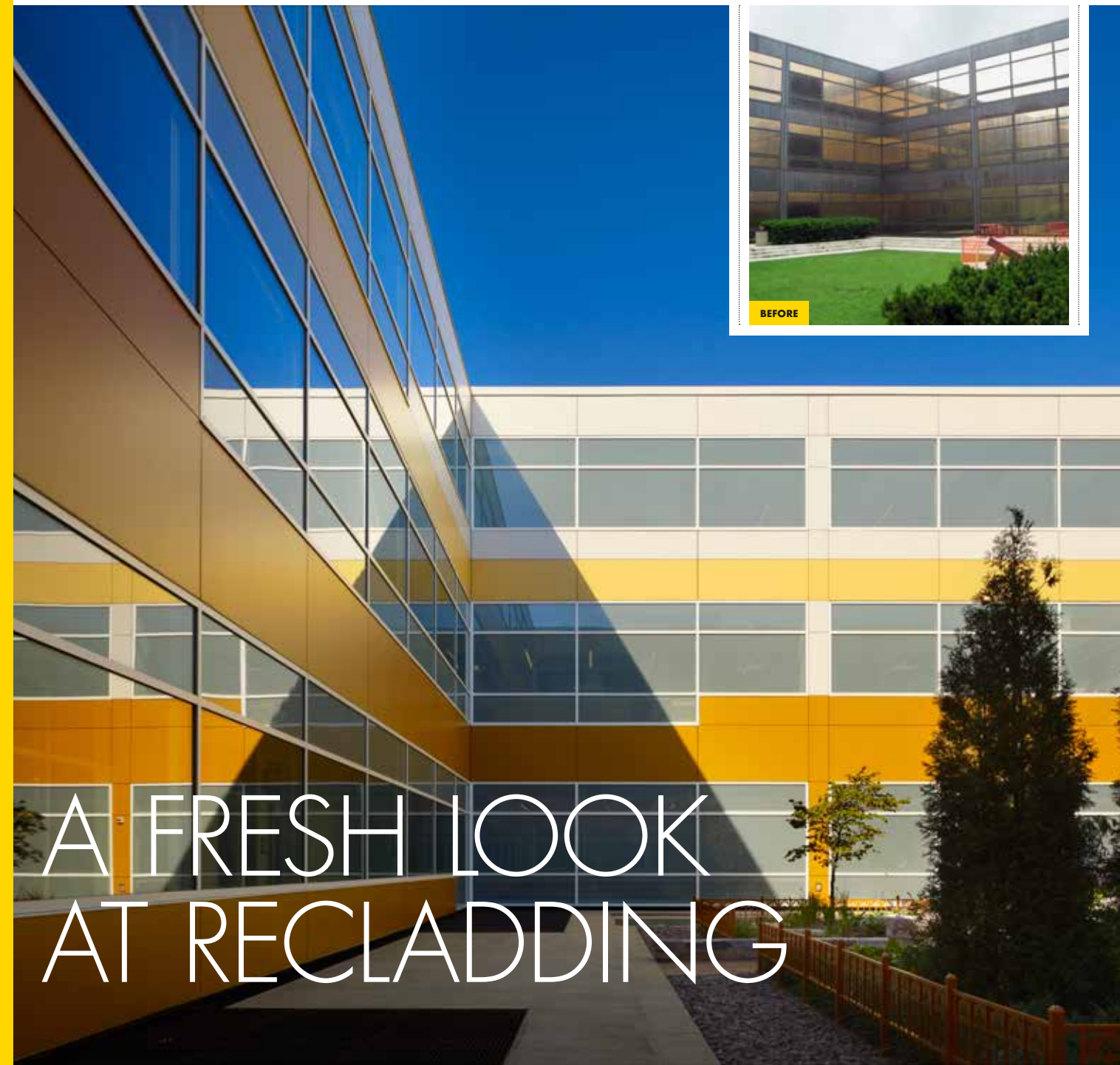
INTELLECTUAL PROPERTY

All intellectual property rights and other rights regarding the content of this document (including logos, text and photographs) are owned by Trespa and/or its licensors. Any use of the content of this document, including distribution, reproduction, disclosure, storage in an automated data file or the dispatch of such a file without Trespa's prior written consent is explicitly prohibited. * Trespa, Meteor, Athlon, TopLab, TopLab^{PLUS}, TopLab^{PCO-FABRIE}, Virtuo, Izeon, Volkern, Trespa Essentials and Mystic Metallics are registered trademarks of Trespa.

QUESTIONS

Should you have any questions or comments, please do not hesitate to contact Trespa.

TRESPA® METEON® | EXTERIOR



A FRESH LOOK AT RECLADDING



TRESPA®



VISIT TRESPA.COM FOR THE MOST UP TO DATE VERSION OF THIS DOCUMENT.

TRESPA®

Think Trespa

TRESPA®

VERSION 1.0 • BROCHURE CODE V2406 • DATE 01-2014

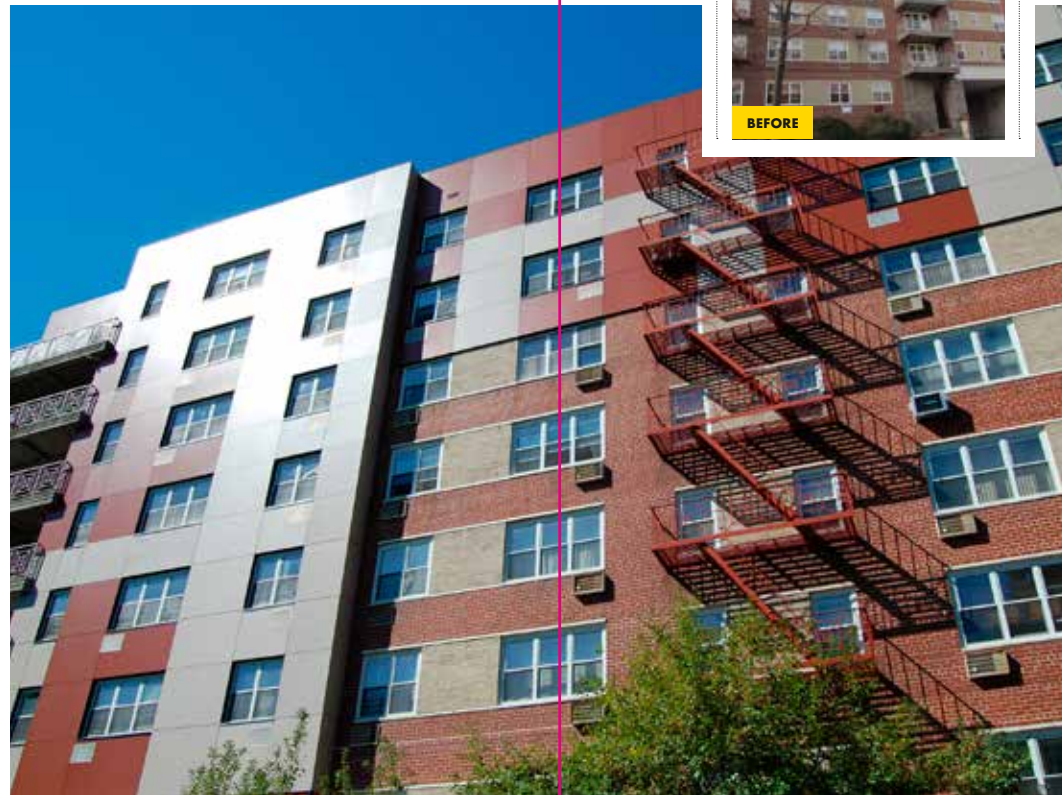
TRESPA® METEON®

IMPROVING BUILDING PERFORMANCE

ALTHOUGH THEY MAY BE FULL OF CHARACTER, OLDER BUILDINGS OFTEN HAVE A DATED LOOK. MOREOVER, PROLONGED WATER DAMAGE, OUTDATED HVAC SYSTEMS, AND/OR LACK OF INSULATION CAN MAKE THEM HIGHLY INEFFICIENT, SO THAT THEY DO NOT MEET CURRENT ENERGY CODE REQUIREMENTS. RECLADDING WITH TRESPA® METEON® WILL HELP TO CREATE A STUNNING NEW LOOK, WHILE AT THE SAME TIME IMPROVING THE BUILDING'S OVERALL ENERGY PERFORMANCE AND MAKING THE EXTERIOR MORE DURABLE, ECONOMICAL AND FUNCTIONAL.

TRESPA® METEON® HAS INSPIRED ARCHITECTS AND DESIGNERS TO CREATE OUTSTANDING AND INNOVATIVE BUILDINGS ALL OVER THE WORLD. LOOKING BEYOND THE STUNNING ARCHITECTURAL DESIGNS, TRESPA® METEON® IS PERFECT FOR USE IN INNOVATIVE AND FUNCTIONAL VENTILATED FACADE SYSTEMS.

TRESPA DRAINED AND BACK VENTILATED RAIN SCREEN SYSTEMS ARE COMMONLY APPLIED TO BUILDINGS DESIGNED WITH CONTINUOUS EXTERIOR INSULATION, AIMED AT MEETING ENERGY CODE REQUIREMENTS.



1 WEATHER RESISTANT & COLOR STABILITY

Trespa® Meteon® is ideal for exterior applications. These facades retain their great looks for many years.

2 SUSTAINABILITY

Trespa® Meteon® is now available with PEFC™ or FSC™ certification and can be incorporated into a rain screen facade assembly that is designed to meet applicable energy code requirements.

3 LOW MAINTENANCE & EASY TO CLEAN

The non-porous surface of Trespa® Meteon® limits dirt accumulation, keeping the product smooth and easy to clean.

4 EASY TO WORK WITH

Trespa® Meteon® facade systems are fabricated and installed by trained professionals, offering a choice of several fixing systems that can accommodate exterior insulation and provide a great deal of design freedom and flexibility.

5 AESTHETICS & DESIGN FREEDOM

Available in many standard colors and finishes, Trespa® Meteon® inspires attractive design and architecture.

ECHO HOUSE

Individual housing, Missouri, USA

“Trespa® Meteon® was chosen for its looks, longevity and durability.”

Mike Latta



PHOTOGRAPHY MARIUSZ MIZERA



“Trespa rain screen was the clear choice”

CARRIAGE HOUSE

Multi housing/Apartments, Yonkers, NY, USA

“To address the water infiltration issues associated with this property, we analyzed a number of solutions, and a Trespa rain screen was the clear choice. Given the building’s construction and exposure, we aimed to create a solution that would address the practical issue of waterproofing the existing structure, while bringing an aesthetics proposition that would actually

add value to the property. With Trespa, we were able to maneuver through the challenges presented by the existing building façade, work in a completely complimentary color scheme and create a visual character for the campus that updates both the pedestrian experience of the site along with its exposure to the surrounding community.”

Michael Macaluso, Principal, MJM+A Architects



“Recladding proved to be the best possible solution, effecting a transformation into an aesthetically pleasing building which delivers the required performance and sustainability - with little or no disruption of classes.”

COLLEGE OF DUPAGE

Educational, Illinois, USA

“This project involved the recladding of an imposing 600,000 sq. ft building, erected in the 1970s. Apart from being unattractive, the building did not perform to current building standards. It had little or no insulation – and film on the windows.

impact resistance, important aspects for a building situated in a college campus. Moreover, we were able to increase user comfort by bringing more natural light into the building – and by using Trespa® material in the interior of the building, we were able to blend the exterior with the interior.

Recladding offered a number of key advantages. It allowed us to retain the structure, which was sound, and it enabled us to carry out the installation work in phases, while classes were going on.

The result: a more vibrant, light, easy-to-maintain and environmentally sound building that will last for many years to come.”

Peter Schlossman, principal, Loebel, Schlossman & Hackl

Key reasons for choosing Trespa® Meteon® were the extensive color range and its high