

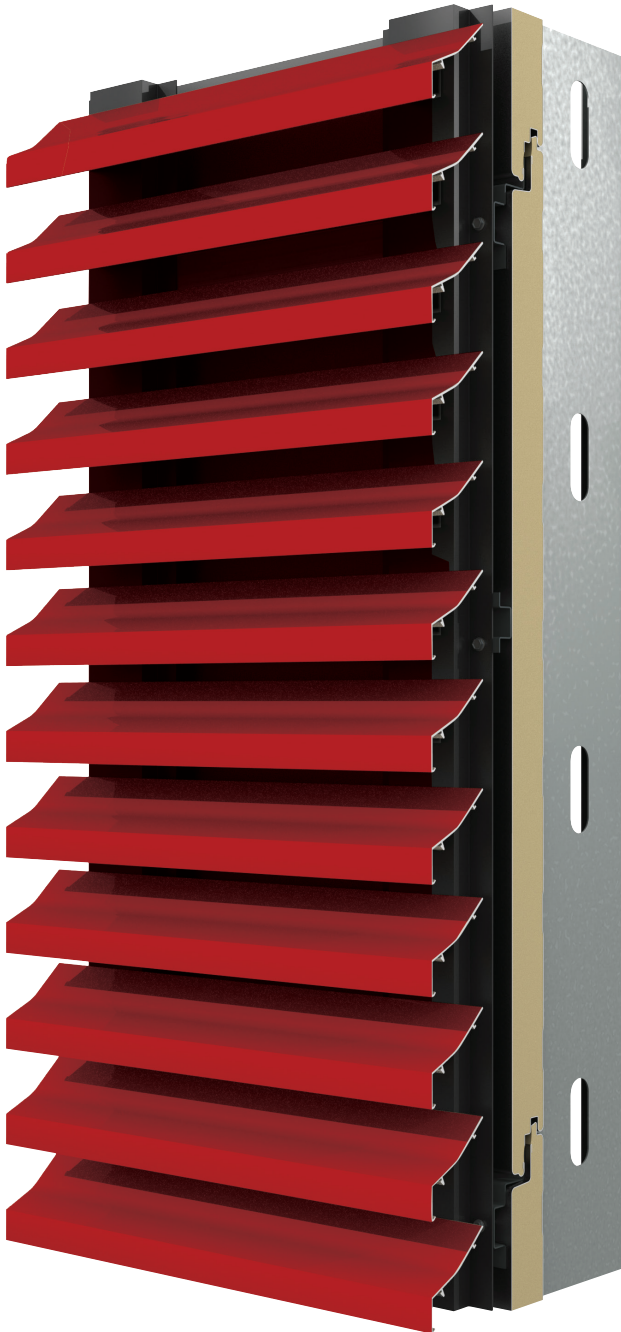


Construction Specialties™

MetalWrap™ Series Louvers

C/S Louvers & CENTRIA Wall Systems

Louvers with true wall performance in one system



.....

The integrated C/S Louver MW-7315 is designed for large areas where the louvers are more than a performance requirement, they are an architectural feature.

C/S' Integrated Louver system uses Storm Resistant MW-7315 front blades over CENTRIA MetalWrap Series insulated back up panel system in the inactive louver area.

The MW-7315 is ideal for large runs of continuous louvers with a high percentage of inactive areas.

Use in locations with conditioned/occupied space behind, where an insulated wall is required. Seamlessly transition between active and inactive louver to maintain a uniform appearance.

.....

Now with two model options:
MW-7315

New MW-9615



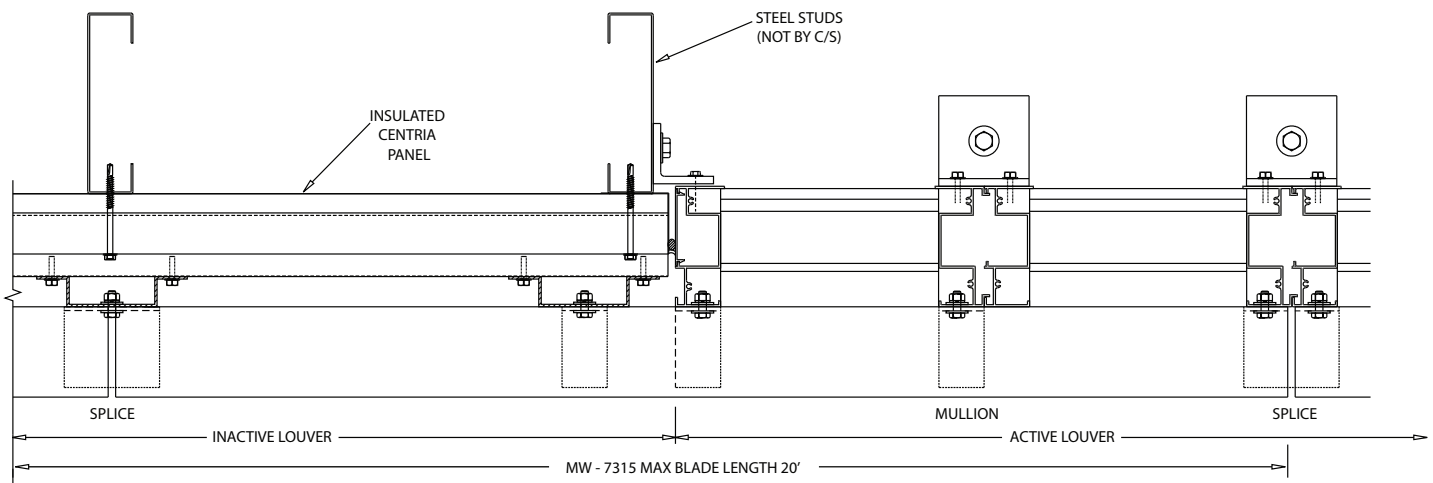
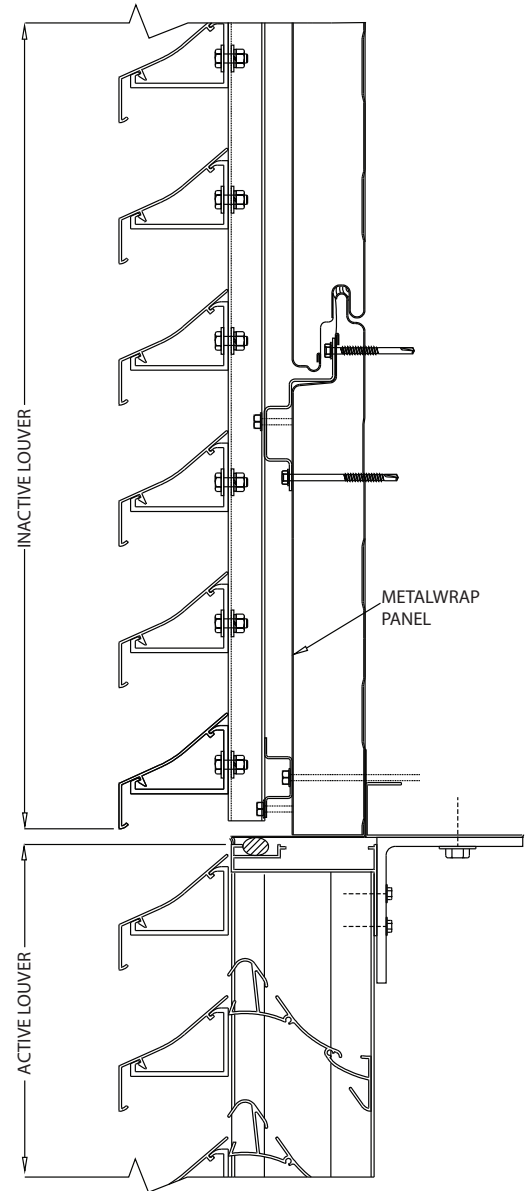
METALwrap
SERIES

For MetalWrap details refer to CENTRIA MetalWrap Series literature

MW-7315

C/S & CENTRIA Integrated MW-7315 MetalWrap™ Series Louver features and benefits:

- Tested wall system
- Provides water, vapor and air barrier
- High R-value - 2" and 3" thick panels
- Thermally broken
- Continuous front blades
- Blades ship loose in up to 20' lengths
- Inactive areas are visually indistinguishable from active areas
- C/S Storm Resistant MW-7315 Louvers in active areas

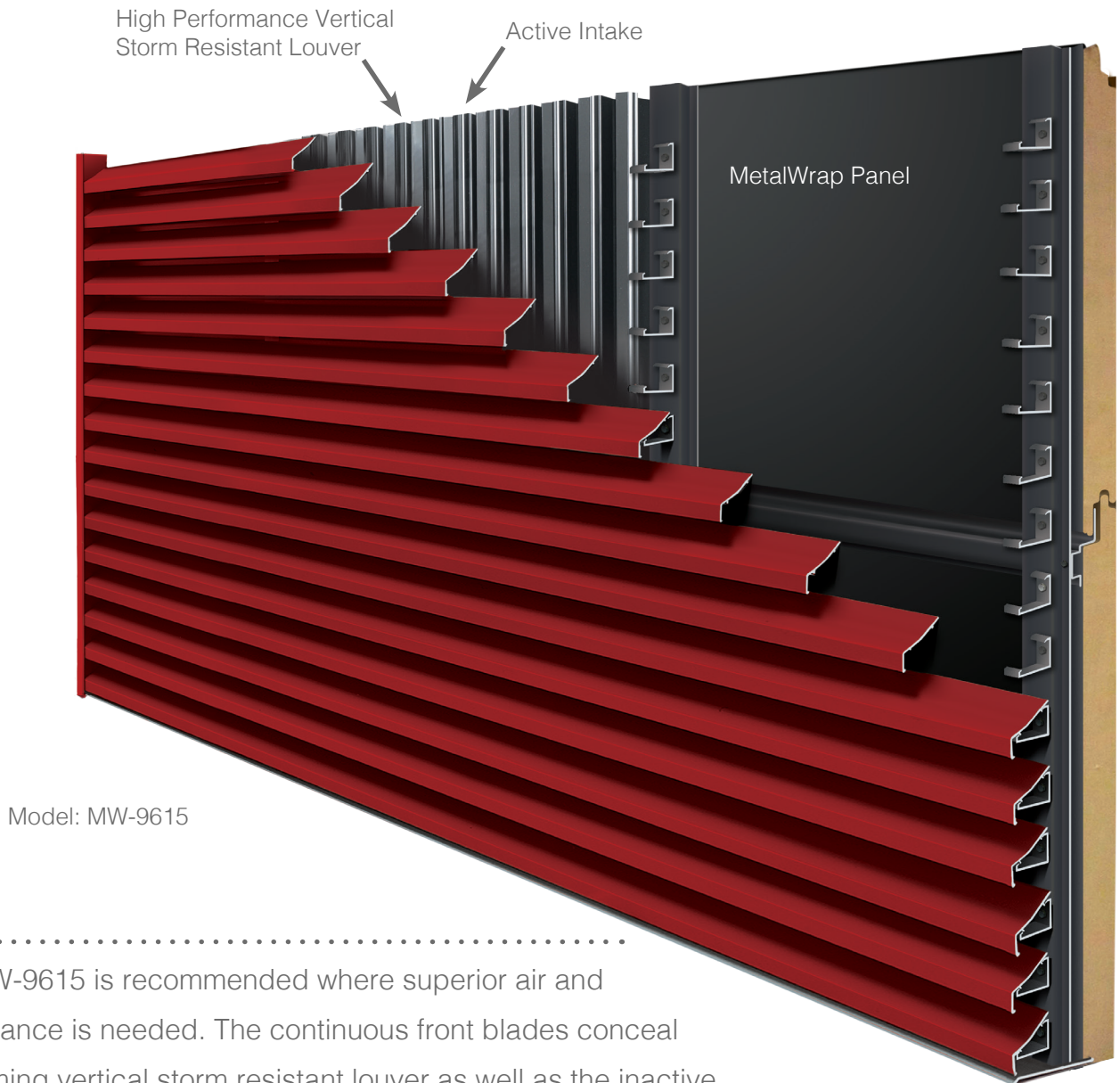


HORIZONTAL TRANSITION - C/S METALWRAP SERIES LOUVER

New C/S MW-9615

High Performance Louver & CENTRIA Wall Systems

Louvers with true wall performance in one system



Model C/S MW-9615 is recommended where superior air and water performance is needed. The continuous front blades conceal a high performing vertical storm resistant louver as well as the inactive CENTRIA MetalWrap Series backup panel system.

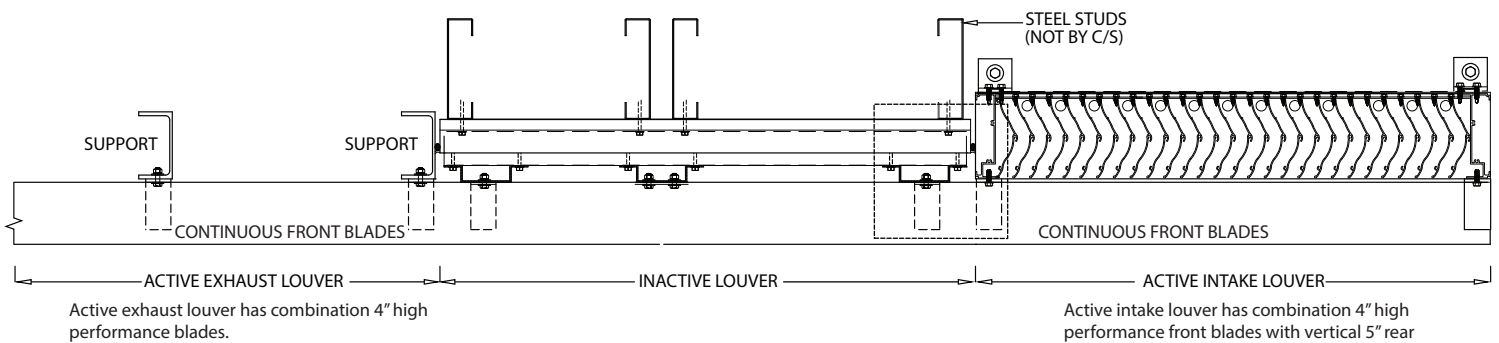
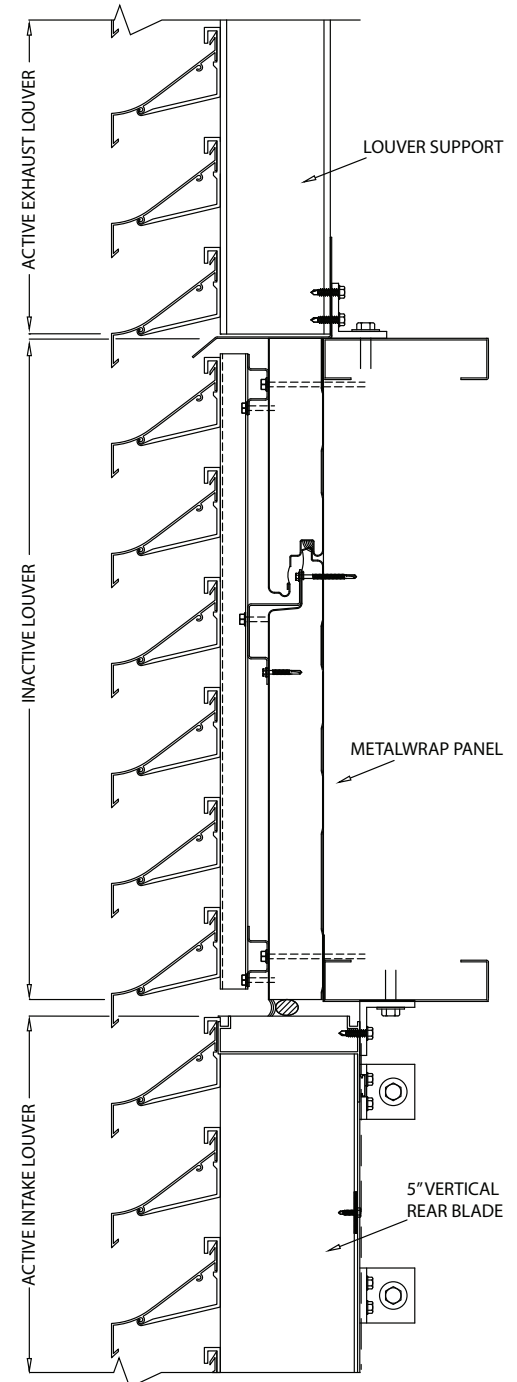
The MW-9615 is ideal in areas where high performance active intake and exhaust louvers are necessary. Use CENTRIA MetalWrap panel in areas with conditioned/occupied space behind, where a sealed insulated wall is required. Continuous front blades up to 20' long provide a seamless appearance at both active and inactive louver areas.

MW-9615

C/S & CENTRIA

Integrated MW-9615 MetalWrap™ Series Louver features and benefits:

- Tested wall system
- Provides water, vapor and air barrier
- High R-value - 2" or 3" thick panels
- Thermally broken
- Continuous front blades
- Inactive areas are visually indistinguishable from active areas
- High performance C/S Vertical Storm Resistant
- MW-9615 Louvers provide superior air and water performance in active areas



HORIZONTAL TRANSITION - C/S METALWRAP SERIES LOUVER