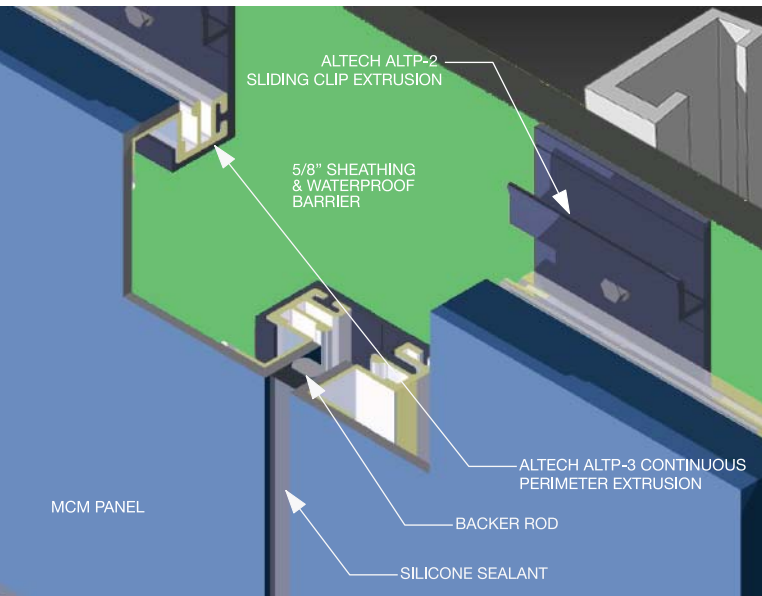


The **Accu-Trac® DS System** is a dry-joinery system utilizing standard 1/2" reveals to emphasize the vertical and horizontal joints in lieu of exposed sealants. The DS system provides ease of installation with our patented sliding clip technology. Custom reveals with variable dimensions are also available. A nearly endless variety of colors, natural metals, wood grains and faux stone finishes are available which allows this system to be utilized in a multitude of applications to fit **any** design!

Accu-Trac DS

- ASTM 283
- ASTM 330
- ASTM 331
- TAS 201
- TAS 202
- TAS 203
- AAMA 508
- AAMA 509
- Florida Product Approval No. 15337 (High Velocity Hurricane Zone Approved)
- NFPA 285

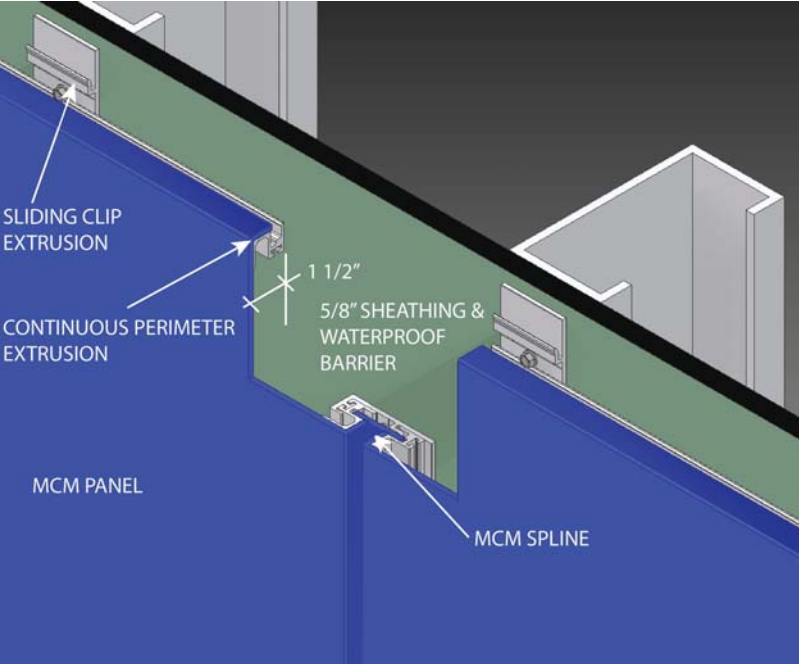


The **Accu-Trac® ES System** is an exposed seal panel system utilizing a backer rod and silicone sealant in both the vertical and horizontal joints. The ES system provides ease of installation with our patented sliding clip technology. The ES System can serve as the main air and moisture barrier protecting your building from the elements. Additionally, the ES System can be used in high wind load regions without the need for a plywood substrate or reinforcing core as required with other systems. (This saves our customers both time and money.) A nearly endless variety of colors, natural metals, wood grains and faux stone finishes are available which allows our system to be utilized in a multitude of applications to fit **any** design!

Accu-Trac ES

- ASTM 283
- ASTM 330
- ASTM 331
- ASTM 1886
- ASTM 1996
- TAS 201
- TAS 202
- TAS 203
- Florida Product Approval No. 12087
- Florida Product Approval No. 16406.1 (High Velocity Hurricane Zone Approved)
- NFPA 285

Low Profile DS (Pressure Equalized / Rear Ventilated Rainscreen)

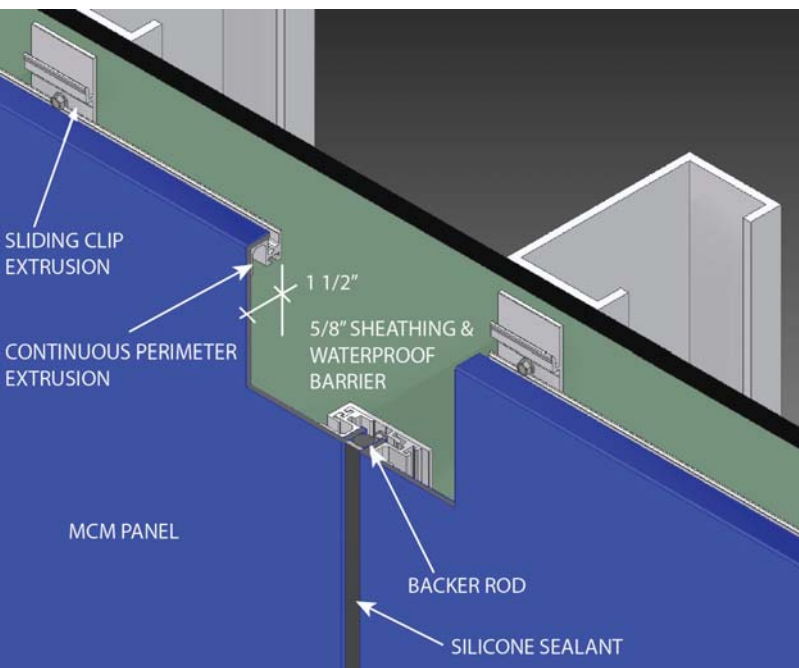


The **Low Profile DS** system is a 1-1/2" deep, back ventilated rainscreen system with an integral spline. This system is not only designed as a cost saving alternative to conventional systems, but its low-profile allows it to be used in areas where system depth is limited. A nearly endless variety of colors, wood grains, faux stone and natural metal finishes means the Low Profile DS system can be used for either interior or exterior applications and fit **any** design!

Low Profile DS

- ASTM 283
- ASTM 330
- ASTM 331

Low Profile ES (Exposed Seal Joinery)

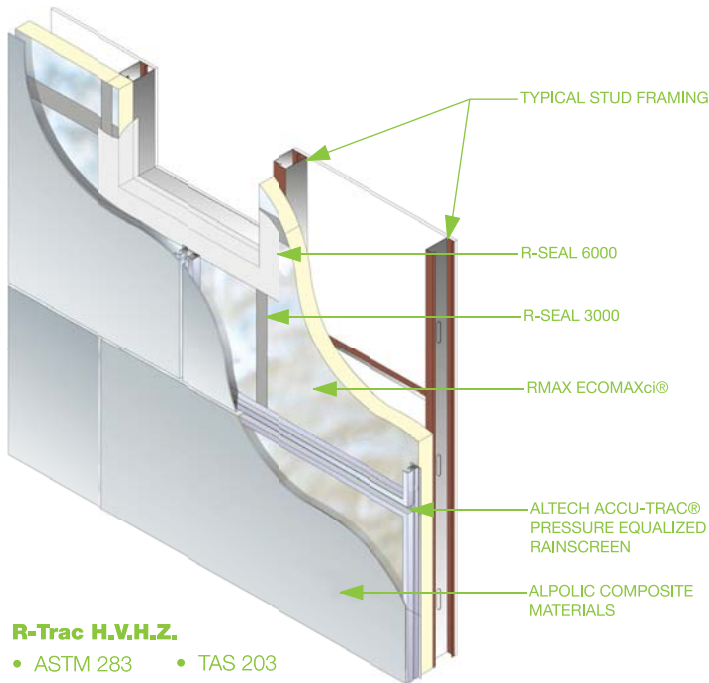


The **Low Profile ES** system is a 1-1/2" deep, exposed sealant system. This system is not only designed as a cost saving alternative to conventional systems, its low-profile allows it to be used in areas where system depth is limited. A nearly endless variety of colors, wood grains, faux stone and natural metal finishes means our Low Profile ES system can be used for either interior or exterior applications to fit **any** design!

Low Profile ES

- ASTM 283
- ASTM 330
- ASTM 331

R-Trac H.V.H.Z. System (Pressure Equalized / High Pressure)

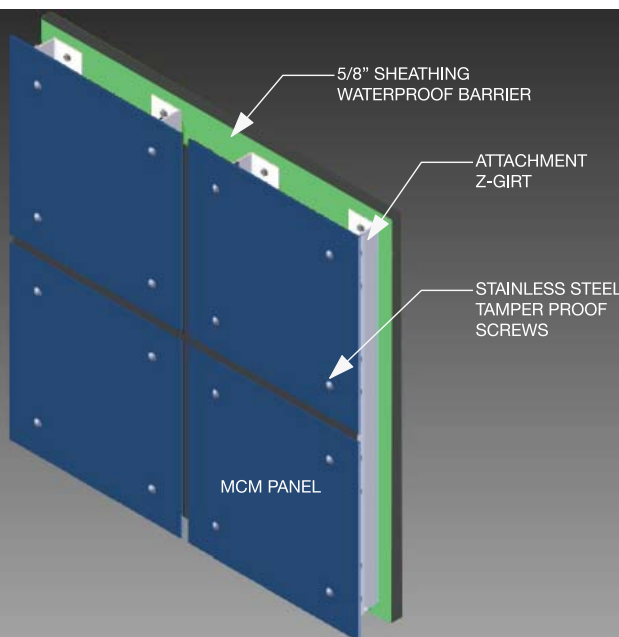


R-Trac H.V.H.Z.

- ASTM 283
- ASTM 330
- ASTM 331
- ASTM 1886
- ASTM 1996
- TAS 201
- TAS 202
- TAS 203
- AAMA 508
- AAMA 509
- Florida Product Approval No. 16406.2 (High Velocity Hurricane Zone Approved)
- NFPA 285
- ASHRAE 90.1

The **R-TRAC H.V.H.Z.** system is a pressure equalized rainscreen featuring Rmax ECOMAXci® polyisocyanurate, (polyiso) insulation and Alpolic aluminum composite material. This system meets new continuous insulation requirements and includes approval for all coastal regions. The R-Trac System carries Florida Building Code Approval, meets the rigorous Miami Dade testing requirements and has high velocity hurricane zone approval with a “dry-joint”. This means there’s no caulk in the joints to wear out! The R-Trac system has been tested and listed to meet NFPA 285, ABAA Air Barrier Assembly criteria and ICC-ES Water-Resistive Barrier acceptance criteria. Additionally, Rmax ECOMAXci® polyiso insulation offers the highest R-value per inch of any comparable insulation, achieving up to a 20.3 R-Value in a three inch nominal thickness. Since ECOMAXci® provides continuous insulation, thermal leaks associated with steel studs are eliminated as is thermal bridging! With current building codes changing and few options available to architects, builders and contractors in high-wind hurricane zone areas, professionals are choosing the Altech R-Trac H.V.H.Z. system with ECOMAXci® continuous insulation to meet the tough demands of their projects!

EFS (Exposed Fastener System)



The **EFS** (Exposed Fastener System) has been designed to offer the look, feel and performance of a European face-fastened rainscreen system, such as phenolic resin panels, at a fraction of the cost! The exposed fasteners are stainless steel and tamper-proof while our support system can be tailored to fit individual project requirements. The EFS system is lightweight and installs easily and quickly. A nearly endless variety of colors, natural metals, wood grains and faux stone finishes are available which allows our system to be utilized in either exterior or interior applications to fit any design!

Large Scale Graphic System (LSG)



Whether your design calls for a “Times Square” sized graphic image or just a logo on signage, Altech’s LSG system is the cost-effective answer. With Altech’s LSG System, there is virtually no limit to the size of graphic art that can be incorporated into our metal panel system, there is truly no limit to the artwork! Any photograph or digital file can be utilized with our system and the results are always stunning!

Key-Trac Interior System



Altech’s Key-Trac interior system is designed to provide the architect or designer with an extremely thin system depth, as thin as 1/2". Our system installs easily with a back panel simply mounted to conventional drywall and metal studs. The face panels are subsequently applied and are available in a limitless variety of sizes and shapes as well as different colors to meet all of your design requirements.

