

TRESPA® METEON® | EXTERIOR

SOLAR PROTECTION WITH TRESPA



Think Trespa

TRES|PA®

TRESPA® METEON®

AESTHETIC FREEDOM FOR ENERGY EFFICIENCY

SOLAR PROTECTION SOLUTIONS ARE BECOMING INCREASINGLY MORE RELEVANT IN THE CONCEPTUAL AND DESIGN PHASES OF NEW AND REHABILITATED BUILDINGS AND ARE ESSENTIAL FOR REGULATING THERMAL AND LIGHTING COMFORT LEVELS.

FOR OVER 50 YEARS, TRESPA HAS BEEN USING ITS EXPERIENCE TO PROVIDE DESIGNERS, BUILDERS AND HOMEOWNERS WITH SOLUTIONS ON THE DESIGN AND EXECUTION OF DURABLE FAÇADE SOLUTIONS.

When designing a building and/or undertaking renovation work, both the treatment of energy comfort levels for users and the building energy saving effects are key considerations. These require us to create solar protection solutions that combine efficacy, functionality and aesthetics.

Solutions such as slat systems incorporate energy, economic and environmental savings for practically all types of projects. In most cases these savings are achieved by air conditioning elements thanks to their solar protection function.

There are many different positions and types of systems. Trespas® Meteon® is a perfect solution, since this material has the following principal characteristics:

- 1 DESIGN FREEDOM**
- 2 DURABLE INSTALLATION AND EASY HANDLING**
- 3 GUARANTEED PRODUCT QUALITY**
- 4 LOW MAINTENANCE AND EASY TO CLEAN**
- 5 SUSTAINABLE**



Not only is Trespas® Meteon® visually attractive.

Tests prove that the material's aesthetics are extremely long-lasting, so that today's vision remains tomorrow's reality.

Think Trespas

1 DESIGN FREEDOM

Trespa® Meeon® brings compelling aesthetics and nearly limitless design possibilities with various colours, rhythms and depths to next-generation architectural claddings.



Los Molinos Building | Tenerife | Spain

2 EASY HANDLING

Trespa® Meeon® requires no treatment for edges as there is no risk of delamination.

3 GUARANTEED PRODUCT QUALITY

The entire Trespa® Meeon® range has been subjected to durability testing. This enables us to offer a 10-year worldwide warranty; for details about warranty see www.trespa.info



Apartments | Zaragoza | Spain

4 LOW MAINTENANCE AND EASY TO CLEAN

The closed surface of Trespa® Meeon® practically withstands dirt accumulation, keeping the product smooth and easy to clean.



Duoc San Andres II building | Concepcion | Chile

5 SUSTAINABLE

Trespa® Meeon® products contain up to 70% of natural fibres, most of which originate from managed forests which are recognised by the Programme for the Endorsement of Forest Certification™ (PEFC™) and the Forestry Stewardship Council™ (FSC™). These organisations encourage, among other eco-benefits, that forests are sustainably managed, taking the ecosystem and biodiversity as well as fair labour conditions into consideration.



MOBILE SYSTEMS

From an energy point of view, these are the most effective solutions as they change the slat orientation angle, depending on the position of the sun during the day. These motorised solutions can be customised on a case-by-case basis.



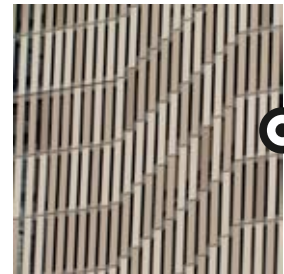
Education Centre | Haßfurt | Germany

VERTICAL SOLUTIONS

These are the result of a new look applied to buildings, using the maximum length of the slat as an expression of verticality and height.



Hotel Mod05 | Castelnova del Gardia | Italy



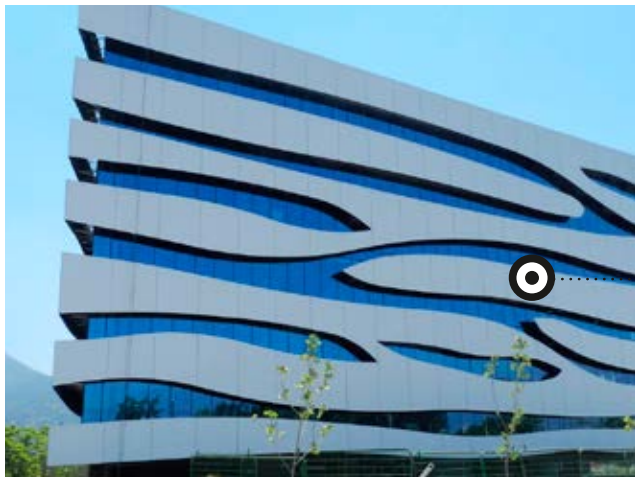
Vitra building | Santiago | Chile

FIXED SYSTEMS

Following a detailed study of the building's location and orientation, together with the lighting needs, these systems are simple in terms of design and application, whilst maintaining an excellent summer-winter thermal balance.



Auditorium Josep Carreras | Vil.la Seca | Spain



White Vitacura | Santiago | Chile

SUPERIMPOSED SOLUTIONS

These are designed with a dual aesthetic and energy comfort function, thus adding an ingenious touch during the design phase which affords the building a unique singularity.

HORIZONTAL SOLUTIONS

These are the most common and imitate traditional window blinds. Clearly related to more traditional aesthetic concepts, they are somewhat more effective in improving a building's energy efficiency.

TRESPA® METEON® DELIVERY PROGRAMME

UNI COLOURS

A28.2.1 Aquamarine	A22.3.1 Ocean Grey	A24.0.3 Polar Blue	A23.0.4 Mineral Blue	A22.2.4 Powder Blue	A22.2.1 Bluish Grey	A21.1.0 Winter Grey	A05.0.0 Pure White
A32.2.1 Translucent Green	A24.4.1 Steel Blue	A22.1.6 Royal Blue	A22.4.4 Brilliant Blue	A21.5.4 Cobalt Blue	A22.6.2 Dark Denim	A20.2.3 Light Viola	A03.4.0 Silver Grey
A30.3.2 Verdigris	A35.4.0 Cactus Green	A28.6.2 Mid Green	A26.5.4 Pacific	A20.7.2 Dark Blue	A21.7.0 Steel Grey	A20.5.2 Lavender Blue	A21.5.1 Mid Grey
A37.2.3 Spring Green	A33.3.6 Brilliant Green	A32.7.2 Dark Green	A34.8.1 Forest Green	A90.0.0 Black	A25.8.1 Anthracite Grey	A05.5.0 Quartz Grey	A16.5.1 Mauve
A03.1.0 Pastel Grey	A37.0.8 Lime Green	A36.3.5 Turf Green	A08.8.1 Dark Brown	A14.7.2 Deep Red Brown	A11.8.0 Ceramic Greige	A06.7.1 Natural Greige	A06.5.1 Toscana Greige
A05.1.1 Stone Beige	A41.0.6 Mojito Green	A08.4.5 Rusty Red	A09.6.4 Mahogany Red	A12.6.3 Wine Red	A12.3.7 Carmine Red	A10.4.5 Sienna Brown	A10.6.1 Taupe
A04.0.0 Cream White	A04.0.5 Zinc Yellow	A06.3.5 Ochre	A10.1.8 Red Orange	A12.1.8 Passion Red	A17.3.5 Cyclam	A11.4.4 English Red	A08.3.1 Stone Grey
A05.1.0 Papyrus White	A07.1.1 Sand	A05.1.2 Champagne	A04.1.7 Gold Yellow	A05.1.4 Sun Yellow	A08.2.3 Salmon	A10.3.4 Terra Cotta	A08.2.1 Mid Beige
A03.0.0 White	A04.0.1 Pearl Yellow	A04.0.2 Pale Yellow					

TRESPA® METEON® UNI COLOURS ARE AVAILABLE IN:
SATIN ■ ■ ■ ■ ■ | ROCK ■ ■ ■ ■ ■

WOOD DECORS

NW26 Care Ash	NW28 Halmstad	NW24 Greyled Cedar	NW17 Milano Grigio	NW05 Loft Brown	NW22 Slate Wood	NW12 Natural Bogenda	NW15 Milano Sabbia
NW27 Denver Oak	NW29 Woodstone	NW25 Hesbaria	NW14 French Walnut	NW13 Country Wood	NW23 Nordic Black	NW03 Harmony Oak	NW08 Italian Walnut
NW20 Bleached Pine	NW21 Australian Pine	NW02 Elegant Oak	NW18 Light Mahogany	NW19 Dark Mahogany	NW09 Wenge	NW11 Santos Palisander	NW06 Montreux Amber
NW07 Montreux Sungl/Milano Terra	NW16 Milano Terra	NW10 English Cherry	NW04 Pacific Board				

TRESPA® METEON® WOOD DECORS ARE AVAILABLE IN:
SATIN ■ ■ ■ ■ ■ | MATT ■ ■ ■ ■ ■
(NW24/NW29 only available in Matt)

METALLICS

M35.7.1 Malachite Green	M21.8.1 Graphite Grey	M51.0.2 Urban Grey	M51.0.1 Aluminium Grey	M40.4.3 Mustard Yellow	M06.4.1 Amber	M05.5.1 Titanium Bronze	M04.4.1 Titanium Silver
M20.4.2 Northern Light	M12.4.2 Garnet Red	M53.0.1 Copper Red	M53.0.2 Copper Yellow	M24.3.3 Lagoon	M21.3.4 Azurite Blue		

TRESPA® METEON® METALLICS ARE AVAILABLE IN:
SATIN ■ ■ ■ ■ ■ | ROCK ■ ■ ■ ■ ■ | GLOSS ■ ■ ■ ■ ■

NATURALS

NA11 French Limestone	NA12 Natural Chalkstone	NA13 Silver Quartzite	NA14 Weathered Basalt	NA15 Indian Terra Cotta		
NM02 Forged Alloy	NM06 Tempered Grey	NM07 Casted Grey	NM05 Hardened Brown	NM01 Rusted Brown	NM04 Sintered Alloy	NM03 Corroded Green

TRESPA® METEON® NATURALS ARE AVAILABLE IN:
MATT ■ ■ ■ ■ ■ | MATT-ROCK ■ ■ ■ ■ ■ (NM's only available single sided)
★ Decors have gloss elements in the surface.

NEW LUMEN

I90.0.0 Metropolis Black	I21.5.1 London Grey	I25.8.1 New-York Grey	I05.0.0 Athens White
I05.1.2 Barcelona Beige	I11.4.4 Arizona Red	I09.6.4 India Brown	I06.5.1 Italian Greige



TRESPA® METEON® LUMEN:
To experience the effect of the lumen finishes, we advise to order samples.

SIZES

1	2	3	4
2550 x 1860 mm (≈ 100 x 73 inch)	3050 x 1530 mm (≈ 120 x 60 inch)	3650 x 1860 mm (≈ 143 x 73 inch)	4270 x 2130 mm (≈ 168 x 83 inch)*

*The large size of this panel allows an efficient machining of the product.
Note: Full size panels feature a square tolerance.

FOR AVAILABLE SHEET SIZES AND THICKNESSES FOR ALL FINISHES, PLEASE CHECK **TRESPA.INFO** FOR THE DETAILED AND UP TO DATE DELIVERY PROGRAMME AND MATERIAL PROPERTY DATASHEET. ALTERNATIVELY YOU CAN USE THE PRODUCT SELECTOR ON **TRESPA.COM** (AFTER CHOOSING THE COUNTRY WHERE THE PROJECT IS LOCATED).

THICKNESSES

	6 mm (≈ 1/4 inch)
	8 mm (≈ 5/16 inch)
	10 mm (≈ 3/8 inch)
	13 mm (≈ 1/2 inch)

FINISHES

SATIN	GLOSS	MATT
ROCK	MATTROCK	

TYPES

- SINGLE SIDED DECORATIVE: Decorative side with non decorative black reverse.
- DOUBLE SIDED DECORATIVE: Same colour for front and reverse side of the panel.
- VARITOP: Decorative side with standard white decorative Satin reverse (A03.0.0).
- DUOCOLOUR: Different colour for front and reverse side of the panel.

CONTACT US

TRESPA INTERNATIONAL B.V.

P.O. Box 110, 6000 AC Weert
Wetering 20, 6002 SM Weert
The Netherlands
www.trespa.com

CUSTOMER SERVICE DESK

EMEA EXPORT

Tel: +31 (0) 495 458 359
Fax: +31 (0) 495 458 383
Info.Export@Trespa.com

TRESPA UK LTD.

35 Calthorpe Road
Edgbaston
Birmingham, B15 1TS
United Kingdom
Tel: 0808-2340268
Fax: 0808-2341377
Info.UK@Trespa.com

TRESPA NORTH AMERICA LTD.

62 Greene Street (Ground Floor)
New York, NY 10012
United States of America
Tel: +1 800 487 3772
Fax: +1 866 298 3499
Info.NorthAmerica@Trespa.com

TRESPA CHINA CO. LTD.

Room 2604-05, HuaiHai Plaza
No. 1045 HuaiHai Road (central)
ShangHai 200031
P.R. China
Tel: +86 (0) 21 6288 1299
Fax: +86 (0) 21 6288 1296
Info.China@Trespa.com

CUSTOMER SERVICE DESK

ASIA/PACIFIC

Tel: +86 (0) 21 5465 8388
Fax: +86 (0) 21 5465 6989
Info.APAC@Trespa.com

VISIT US

TRESPA DESIGN CENTRE NEW YORK

62 Greene Street (Ground Floor)
New York, NY 10012
United States of America
Tel: +1 212 334 6888
Fax: +1 866 298 3499
TDC.NewYork@Trespa.com
www.trespa.com/tdc

TRESPA DESIGN CENTRE WEERT

Wetering 20
6002 SM Weert
The Netherlands
Tel: +31 (0) 495 458 845
TDC.Weert@Trespa.com
www.trespa.com/tdc

TRESPA DESIGN CENTRE BARCELONA

Calle Ribera 5,
08003 Barcelona
Spain
Tel: +34 (0) 93 295 4193
Fax: +34 (0) 93 116 3300
TDC.Barcelona@Trespa.com
www.trespa.com/tdc

TRESPA DESIGN CENTRE SANTIAGO

Eliodoro Yáñez 2831
Torre A - Local 1
Providencia, Santiago
Chile
Tel: +56 2 4069990
TDC.Santiago@Trespa.com
www.trespa.com/tdc

FOLLOW US



DISCLAIMER

GENERAL

These terms apply to the use of this document and such use automatically means that the other party agrees to these terms. The information provided by Trespa International B.V. ("Trespa") in this document is solely indicative. Trespa is unable to warrant the accuracy and completeness of this information. Trespa may change the information included in this document at any time and without further notice. Trespa's customers and third parties must ascertain that they have the most recent document (for the most recent version, please consult: www.trespa.com). No rights can be derived from the information provided; the use of the information is at the other party's risk and responsibility. Trespa does not warrant that the information in this document is suitable for the purpose for which it is consulted by the other party. This document does not contain any design, structural calculation, estimate or other warranty or representation that customers and third parties may rely on. This document does not guarantee any properties of Trespa products. Colours used in Trespa's communications (including but not limited to printed matter) and in samples of Trespa's products may differ from the colours of the Trespa products to be supplied. Samples are not intended for use in product tests and are not representative of characteristics of the Trespa

products. Trespa's products and samples are produced within the specified colour tolerances and the colours (of production batches) may differ, even if the same colour is used. The viewing angle also influences the colour perception. Metallics panels feature a surface whose colour appears to change based on the direction from which it is viewed. The specified colour stability and colour specifications relate only to the decorative surface of the Trespa products, not to the core material and samples of the Trespa products. Trespa products are delivered ex-works with straight, sawn sides. Customers and third parties must have a professional adviser inform them about (the suitability of) the Trespa products for all desired applications and about applicable laws and regulations. Trespa does not warrant the above. The most recent version of the current delivery programme and the Material Properties Datasheet can be found at www.trespa.info. Only the information in the most recent and valid Material Property Datasheet should be used to select and provide advice regarding Trespa products. Trespa reserves the right to change (the specifications for) its products without prior notice.

LIABILITY

Trespa is not liable (neither contractual nor non-contractual) for any damage arising from or

related to the use of this document, except if and to the extent that such damage is the result of wilful misconduct or gross negligence on the part of Trespa and/or its management. The limitation of liability applies to all parties affiliated with Trespa, including but not limited to its officers, directors, employees, affiliated enterprises, suppliers, distributors, agents, and representatives.

GENERAL CONDITIONS

All oral and written statements, offers, quotations, sales, supplies, deliveries and/or agreements and all related activities of Trespa are governed by the Trespa General Terms and Conditions of Sale (*Algemene verkoopvoorwaarden Trespa International B.V.*) filed with the Chamber of Commerce and Industry for Noord- en Midden-Limburg in Venlo (NL) on 11 April 2007 under number 24270677, which can be found on and downloaded from the Trespa website, www.trespa.com/documentation. All oral and written statements, offers, quotations, sales, supplies, deliveries and/or agreements and all related work of Trespa North America, Ltd. are governed by the Trespa North America General Terms and Conditions of Sale, which can be found on and downloaded from the Trespa website, www.trespa.com/documentation. A copy of these general conditions of sale will be provided free of

charge on request. All general terms and conditions other than the conditions mentioned above are dismissed and do not apply, regardless of whether such terms and conditions are referred to on requests for offers, offer confirmations, stationery and/or other documents of the other party, even if Trespa does not expressly object to such terms and conditions.

INTELLECTUAL PROPERTY

All intellectual property rights and other rights regarding the content of this document (including logos, text and photographs) are owned by Trespa and/or its licensors. Any use of the content of this document, including distribution, reproduction, disclosure, storage in an automated data file or the dispatch of such a file without Trespa's prior written consent is explicitly prohibited. * Trespa, Meteon, Athlon, TopLab, TopLab^{PLUS}, TopLab^{ECO-FIBRE}, TopLab^{VERTICAL}, TopLab^{BASE}, Virtuon, Izeon, Pura NFC, Volkern, Trespa Essentials and Mystic Metallics are registered trademarks of Trespa.

QUESTIONS

Should you have any questions or comments, please do not hesitate to contact Trespa.

VERSION 3.0 ■ BROCHURE CODE U2413 ■ DATE 02-2016



VISIT TRESPA.COM FOR THE MOST
UP TO DATE VERSION OF THIS DOCUMENT.

TRESPA®