



## **ASTM E 136 PERFORMANCE TEST REPORT SUMMARY**

Rendered to:

AVENERE CLADDING, LLC  
2801 Sisson Street  
Baltimore, Maryland 21211

Report No: 78614.01-106-31

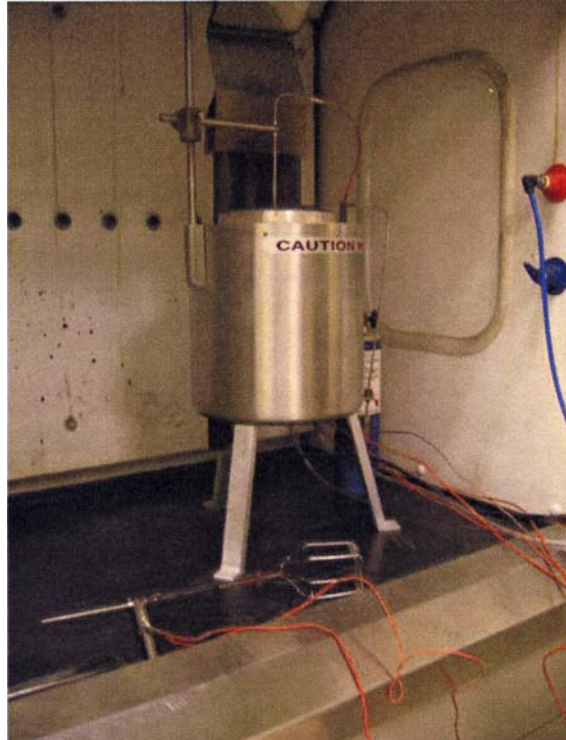
**ASTM E 136**

**Product:** NeaCera® Terra-cotta Wall Panels

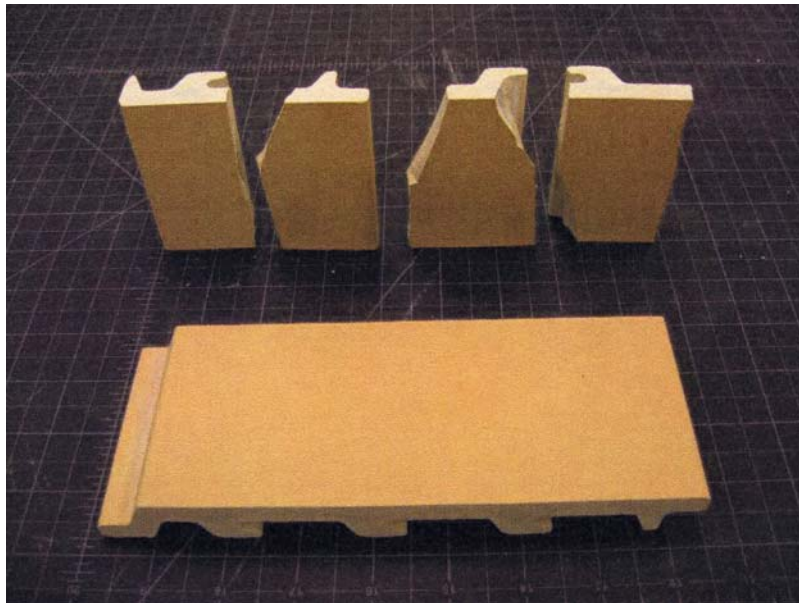
**Project Summary:** Architectural Testing, Inc. (ATI) was contracted by Avenere Cladding, LLC to perform fire rated performance tests on their NeaCera (Terra cotta) product. Samples were provided by Avenere Cladding, LLC and modified as necessary by ATI personnel to suit ASTM E 136 specifications. All samples tested met the specification pass requirements (as per Section 8.2) by exhibiting a <50% loss in mass, no flame during the test, nor a temperature 30° C higher than the stabilized pre-test temperature of 750° C.

**Test Methods:** The test specimen was evaluated in accordance with ASTM E 136, *Standard Test Method for Behavior of Materials in a Vertical Tube furnace at 750° C*.

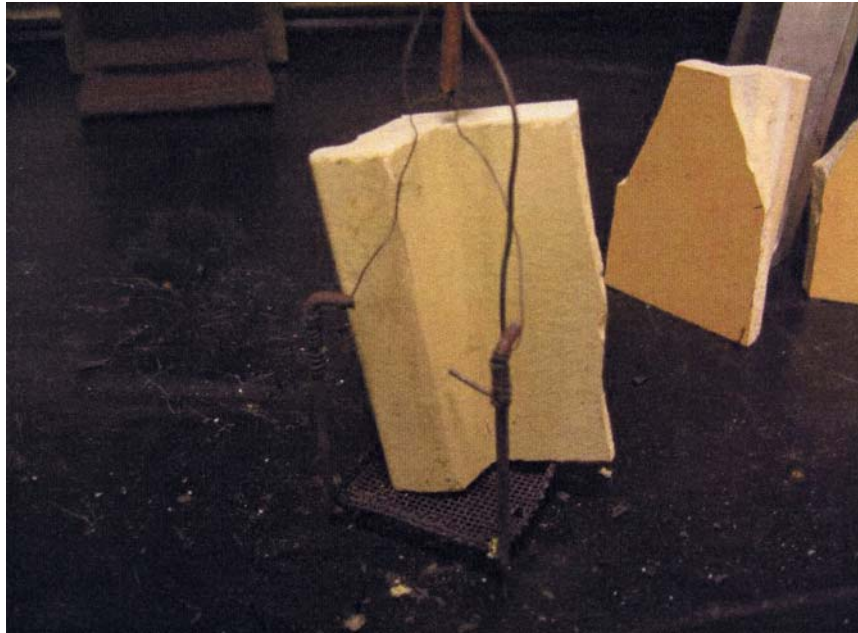
<b>Initial Mass (g)</b>	<b>Final Mass (g)</b>	<b>Reduction in mass</b>	<b>Flame Observed</b>	<b>Result (Pass/Fail)</b>
112.566 (average)	112.402 (average)	<1%	No	Pass
<b>Requirements:</b>	If weight loss is less than 50%, then no temperature rise of 30°C or greater than the stabilized pre-test temperature can occur throughout the test and no flaming can occur after 30 seconds from the start of testing			



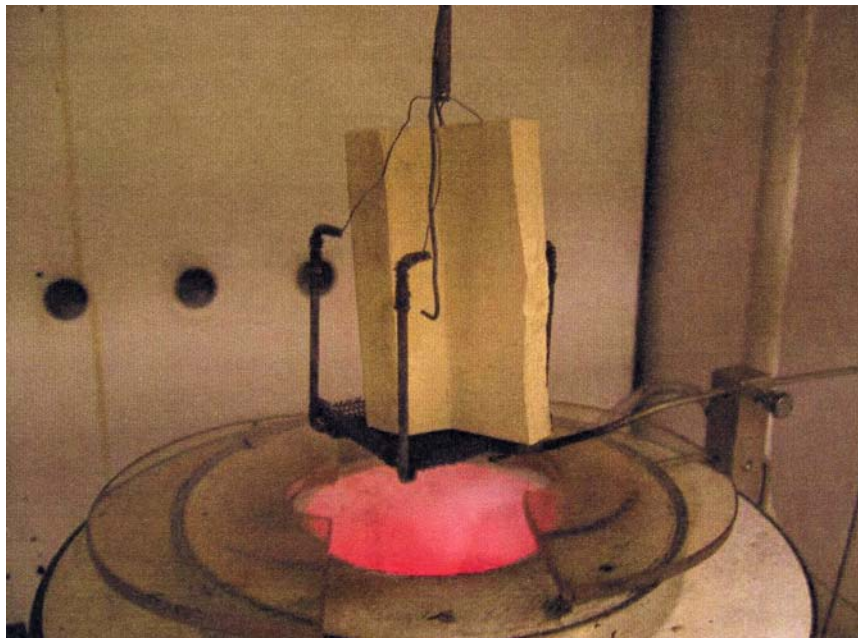
**Photo No.1**  
**Thermal Testing Apparatus**



**Photo No.2**  
**Product and Samples 1-4 (Pre-Test)**



**Photo No.3**  
**Typical Sample in Sample Carriage (Pre-Test)**



**Photo No.4**  
**Typical Sample and Testing Apparatus (Post-Test)**