



PRODUCT CATALOG  
REIMAGINE METAL



## CONTENTS

- 6 Formawall® Dimension Series®
- 10 Formawall® Graphix Series™
- 13 Formavue™ Integrated Window System
- 14 Smart-R™ Wall Solution
- 16 Formawall® Integrated Solutions
- 18 Versawall® & Versapanel® Wall & Roof Panel Systems
- 20 MetalWrap™ Series Insulated Composite Backup Panel
- 24 Intercept™ Modular Metal Panel Systems
- 26 FormaBond® & FormaBond® II  
Metal Composite Wall Systems
- 28 Profile™ Series
- 30 Profile Series Concept Series®
- 32 Profile Series CASCADE™ Metal Panel Wall Systems
- 34 Profile Series IW Series Concealed Fastener Panels
- 36 Profile Series Exposed Fastener Panels
- 38 Profile Series Liner Panels
- 39 EcoScreen® Perforated Screenwall
- 40 Profile Series Design Options
- 42 SRS® Structural Standing Seam Roof Systems
- 44 Coating Systems & Substrates
- 45 Product Finish Availability
- 46 Prismatic™ Series, Sundance™ Series & Duracast®
- 48 Kolorshift™ Series
- 49 Allusion™ & Allura™ Coating System
- 50 Project Index





## OUR INNOVATIONS FUEL INSPIRATION

Bring your inspiration to life with CENTRIA's innovations. Whether it is with our products, tools or services—CENTRIA opens the door to make your next inspiration a reality. CENTRIA provides:

- The highest quality and widest selection of products with industry-leading performance
- Beautiful and unique aesthetics with clean lines, vibrant colors and interesting textures
- A commitment to sustainability that protects the natural environment with low maintenance and long lifecycle products—including several Environmental Product Declaration (EPD)-certified products.

---

## OUR SUPPORT CREATES SOLUTIONS

At CENTRIA, we provide not only superior metal wall and roof systems but also unparalleled service and support. With our consultative, technically-trained sales force and Engineering and Design team that also advises and troubleshoots on the jobsite, combined with our consulting services for substrates, coatings and panels and in-house coil coating services, CENTRIA partners with you from the initial specification to the project's completion.



Caterpillar Visitors Center  
Peoria, IL  
Dewberry

# FORMAWALL®

## The Complete Wall System

FORMAWALL Dimension Series insulated composite metal panels create a durable and aesthetically pleasing exterior wall system. Formawall panels provide outstanding thermal efficiency and moisture control in a single panelized component. Available in both horizontal and vertical panels and in an extensive range of lengths, thicknesses, profiles and reveals, the panels offer superior weather resistance by utilizing pressure equalization along the length of the horizontal joinery. The panels can be curved and panel mitering makes clean, sharp corners possible and they are available with integrated components like windows, louvers and sunshades for a complete high performance system.



3"-T [76mm] | Horizontal Flat



3"-T [76mm] | Vertical Flat

## FEATURES & BENEFITS

- May be installed horizontally or vertically
- Available in a variety of interchangeable reveals, thickness and profile configurations
- Concealed clips, fasteners and sealants plus insulated metal vertical joints or vertical dry gaskets provide a clean, uninterrupted appearance
- Factory foamed-in-place core to ensure no insulation gaps within the panel
- Panels integrate with CENTRIA Formavue™ window systems and are compatible with most other glass wall and window systems
- Pressure-equalized side joint to help prevent water infiltration
- Optional Pressure Equalized Vertical Seal Plate offers multiple line of defense
- Extruded aluminum or factory-formed metal trim available
- Panels can be easily curved
- Mitered panels permit clean, sharp corners, beam and column wraps
- Trimless ends eliminate overlapping trim at panel end details
- Thermal break between face and liner offers efficient panel R-values
- High strength panels offer increased span capability and save support costs with less framing required
- Lightweight — as low as 2.7 psf — easy to handle and install and minimizes foundation load
- Striated, variable striated, smooth, embossed and precast-like surface treatments available
- Integrated louvers and sunshades available



Wexford Health + Wellness Pavilion  
Wexford, PA  
Astorino



University of Tennessee — Natalie L. Haslam Music Center  
Knoxville, TN  
Barber McMurry and Blankenship Partners

# DIMENSION SERIES®

## DESCRIPTION

Architectural insulated metal panel system

### SUBSTRATE & CORE

- Standard 22/26 gage G-90 galvanized steel face and liner with polyisocyanurate foam-insulated core
- Optional gages available—consult CENTRIA
- Optional stainless steel face sheet, 304 stainless steel, 22 or 20 gage, smooth, embossed or striated\*

### JOINERY

- Horizontally oriented panel—Rainscreen, pressure-equalized and drainable joinery, 1/2" [13mm] nom. joint—standard
  - Formawall IMV insulated metal vertical joint 5/8" [16mm] joint—standard

- Pressure Equalized Vertical Seal Plate (3"-T only)—optional
- Gasketed vertical joint 5/8" [16mm]—optional
- Vertically oriented panel—Double tongue-and-groove, 1/8" [3mm] nom. joint—standard

### SURFACE FINISH

- Exterior
  - Non-directional embossed flat or striated
  - Smooth flat or striated
- Interior
  - Non-directional embossed planked or flat
  - Smooth planked

### COATINGS & COLORS

Available in a wide range of coil coated colors and finishes. See charts on pages 45-49.

### PANEL LENGTH

- Smooth—16' [4.88m] max.
- Embossed striated—37' [11.28m] max.
- Embossed—37' [11.28m] max.
- Smooth striated—20' [6.10m] max.
- Duracast—28' [8.53m] max.
- Stainless—16' [4.88m] max.

**For additional product information refer to pages 8-9.**

PANEL TYPE	APPLICATION	THICKNESS [MILLIMETERS]	R-VALUE ASTM 1363	MODULES [MILLIMETERS]	SIDE JOINT REVEALS [MILLIMETERS]
FWDS	Horizontal or Vertical	2" [51] 2.5" [64] 3"-T [76]	R-14 (U=.072) R-17 (U=.060) R-22 (U=.046)	10" - 40" [254-1016]	1/2" [13] Horizontal Joint Standard 1/8" [3] Vertical Joint Optional Reveals 1/4" [6], & 1" [6] to 6" [152] in 1/2" [13] increments
DS58	Horizontal or Vertical	2" [51] 2.5" [64] 3"-T [76]	R-14 (U=.072) R-17 (U=.060) R-22 (U=.046)	10" - 40" [254-1016]	Profiled
DS59 DS60	Horizontal or Vertical	2" [51] 2.5" [64] 3"-T [76]	R-10 (U=.010) R-13 (U=.080) R-16 (U=.062)	12" [305]	2-1/4" [57] Horizontal Joint Standard, Optional Reveals 1-1/4" [32], 1-1/2" [38], 1-3/4" [44], & 2-1/2" [64], to 6" [9152] in 1/2" [913] increments

R-Values are based on ASTM C1363 testing. Air films are included. All data shown for flat panels only. Consult CENTRIA for profiled panel information.

## FORMAWALL DIMENSION SERIES



- 1 component required
- 1 installer required
- Works for all climates
- Superior thermal efficiency
- Total air & moisture control
- Contains no mold food sources
- Integrated windows, louvers and sunshades
- Proven, systematized, long-term performance

vs.

## TRADITIONAL STUD INSULATED MULTI-COMPONENT WALL CONSTRUCTION

- Up to 7 components required
- Up to 3 installers required
- Climate-specific design required
- Thermally inefficient
- Questionable air & moisture control
- May contain mold food sources
- No integrated components
- Unknown performance—dependent upon installation quality

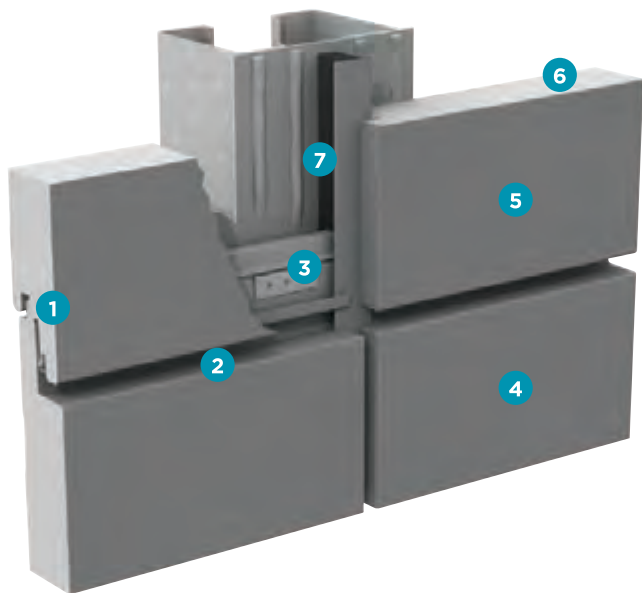


Patent No.: US 6,253,511; 6,627,128; 6,968,659; 8,261,494 Canada 2,351,846

\*Length restrictions apply, please consult CENTRIA



D.C. Waste Water Warehouse and Visitor Center  
Washington, DC  
Samaha Associates



### THE COMPLETE WALL SYSTEM

- 1 Pressure-equalized side joint with concealed sealant protects against water penetration
- 2 Variable reveal sizes, 1/2" [13mm] to 6" [152mm]
- 3 Concealed clips and fasteners provide a sleek exterior appearance with proven long-term performance
- 4 High performance coatings offer long-term coverage, minimal maintenance and excellent color selection for your building's exterior
- 5 Durable metal skins provide impact resistance, strength for increased span capability and a built-in vapor barrier on the interior liner
- 6 Insulating foam core, factory foamed-in-place, provides a thermally efficient exterior wall in either 2" [51mm], 2-1/2" [64mm], or 3" [76mm] thickness
- 7 Unique Insulated Metal Vertical (IMV) joint



**DIMENSION SERIES** Product Details



**Horizontal Flat**  
2" [51mm]  
2-1/2" [64mm]  
3"-T [76mm]



**Vertical Flat**  
2" [51mm]  
2-1/2" [64mm]  
3"-T [76mm]



**DS58 Horizontal Profile**  
2" [51mm]  
2-1/2" [64mm]  
3"-T [76mm]



**DS58 Vertical Profile**  
2" [51mm]  
2-1/2" [64mm]  
3"-T [76mm]



**DS59 Horizontal Profile**  
2" [51mm]  
2-1/2" [64mm]  
3"-T [76mm]



**DS59 Vertical Profile**  
2" [51mm]  
2-1/2" [64mm]  
3"-T [76mm]



**DS60 Horizontal Profile**  
2" [51mm]  
2-1/2" [64mm]  
3"-T [76mm]



**DS60 Vertical Profile**  
2" [51mm]  
2-1/2" [64mm]  
3"-T [76mm]



FIU Academic Health Center  
Miami, FL  
Perkins + Will

**BUILDING CODE APPROVALS**

**FIRE TESTS:**

- Tunnel Test, ASTM E84;
  - a. Flame Spread 25 max.
  - b. Smoke Developed 450 max.
- UL Room Corner Test, UL 1715
- Factory Mutual Approval: FM 4880
- Factory Mutual Approval: FM 4881
- SwRI: Multistory Fire Test, NFPA 285(ISMA)
- ASTM D2015; BTU Content Test
- ASTM D1929; Ignition Properties
- UL Fire Wall Designs: 1 hr, 2 hr, 3 hr, U040

**SPECIAL APPROVALS:**

- Dade County (Missile Impact Resistance)

Consult CENTRIA for test reports.



Concept Building Illustration  
Graphix Series with Directional Reveals  
Vertical and Horizontal Pattern

# GRAPHIX SERIES™

## With Directional Reveals

A single component wall system, Formawall Graphix Series insulated metal wall panels with Directional Reveals offer ultimate design freedom and flexibility. With the new directional reveals, a single insulated panel can be customized to look like up to 24 smaller ones each with its own reveal—or combination of reveals—and in its own color. Formawall Graphix Series insulated metal panels can be installed horizontally or vertically and allow you to choose how and where to position the directional reveals, giving you the ability to create unique, complex patterns and designs that are also easy to install.

### FEATURES & BENEFITS

- Vertical, horizontal and sloped reveals provide unrivaled flexibility in design
- Panels can be segmented as frequently as every 12" [305mm] and can be installed vertically and horizontally
- Panel finishes are available in a wide range of choices so your Graphix Series design may never be duplicated
- Reveal size, color and face texture can be variable within a single panel (limitations exist for some directional reveal types)
- Directional reveals limit the amount of actual joints, which reduces the risk of air and water infiltration
- Installing one panel that looks like several panels can dramatically reduce installation time and complexity—and may reduce the amount of material used on the project
- Combined with Formawall's integrated components, including windows, louvers and sunshades, it's all you need to build the complete wall in any climate

### DESCRIPTION

#### JOINERY

- Horizontally oriented panel—Rainscreen, pressure-equalized and drainable joinery, 1/2" [13mm] nom. joint—standard — Formawall IMV insulated metal vertical joint 5/8" [16mm] joint-standard
- Vertically oriented panel—1/8" [3mm] nom. joint—standard

#### SURFACE FINISH

- Exterior and interior feature non-directional embossed and smooth flat

#### COATINGS & COLORS

Available in a wide range of coil coated colors and finishes. See charts on pages 45-49

#### PANEL LENGTH (Steel Face)

- 20' [6.10m] max.

#### SPECIAL APPROVALS

- Dade County (Missile Impact Resistance)

For additional product information refer to page 12.

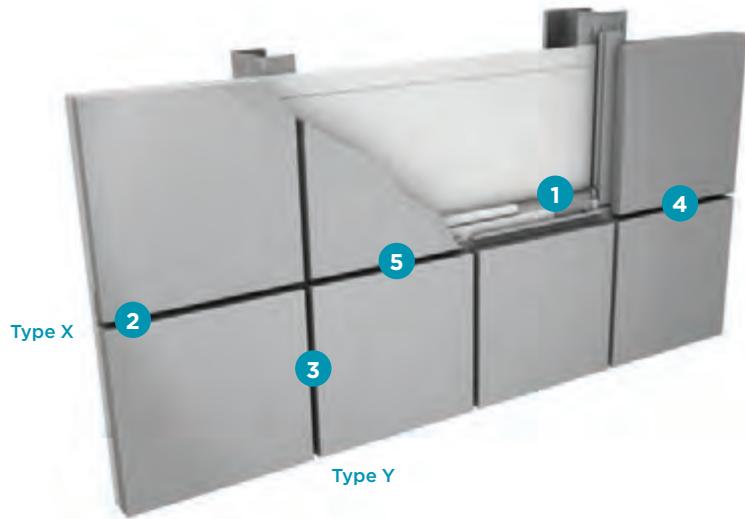
## ALL FWGS HORIZONTAL AND VERTICAL PANELS/ALL REVEAL TYPES

THICKNESS [MILLIMETERS]	R-VALUE ASTM 1363	FACE SUBSTRATE	FACE GAGE [MILLIMETERS]	LINER GAGE [MILLIMETERS]	LINER TEXTURE	MODULES [MILLIMETERS]	SIDE JOINT REVEAL [MILLIMETERS]	END JOINT REVEAL [millimeters]
2" [51]	R-14 (U=.072)	G90	20 ga [0.91] 22 ga [0.76]	20 ga [0.91] 22 ga [0.76] 24 ga [0.60] 26 ga [0.48]	Embossed, planked	10" - 40" [254-1016] minimum and maximums vary by reveal type	1/2" [12.7] (1" - 6" [25.4-152.4] in 1/2" [12.7] increments)	5/8" [16] IMV or gasket
				20 ga [0.91] 22 ga [0.76]	Embossed, flat or Smooth, planked			
2.5" [64]	R-17 (U=.060)	G90	20 ga [0.91] 22 ga [0.76]	20 ga [0.91] 22 ga [0.76] 24 ga [0.60] 26 ga [0.48]	Embossed, planked	10" - 40" [254-1016] minimum and maximums vary by reveal type	1/2" [12.7] (1" - 6" [25.4-152.4] in 1/2" [12.7] increments)	5/8" [16] IMV or gasket
				20 ga [0.91] 22 ga [0.76]	Embossed, flat or Smooth, planked			
3"-T [76]	R-22 (U=.046)	G90	20 ga [0.91] 22 ga [0.76]	20 ga [0.91] 22 ga [0.76] 24 ga [0.60] 26 ga [0.48]	Embossed, planked	10" - 40" [254-1016] minimum and maximums vary by reveal type	1/2" [12.7] (1" - 6" [25.4-152.4] in 1/2" [12.7] increments)	5/8" [16] IMV or gasket
				20 ga [0.91] 22 ga [0.76]	Embossed, flat or Smooth, planked			

R-Values are based on ASTM C1363 testing. Air films are included.

Panel size limitations are based upon the face texture.

Patent No.: 7,895,807; 7,678,219



- 1 Concealed clips and fasteners provide a sleek exterior appearance with proven long-term performance
- 2 Type X Directional Reveal
- 3 Type Y Directional Reveal
- 4 Optional reveals of varying widths
- 5 Segmented joints are treated to match actual IMV or gasketed joint

**DIRECTIONAL REVEALS**

Formawall Graphix Series panels with Directional Reveals offer the appearance of multiple panels with the ease of one. Create unique, complex patterns and designs that are also easy to install by combining horizontal and vertical reveals in a single panel, as well as sloped reveals. Panels shown below are horizontal. Vertical panels are also available.

*Note:* Fasteners in reveals may be required depending upon wind loads.



**One Type Y Reveal**

(Up to 11 available)



**Two Type Y Reveals**



**One Positive Sloped Reveal**

(1 reveal available)



**One Negative Sloped Reveal**



**One Type X Reveal**



**Two Type X Reveals**

(Up to 2 available)

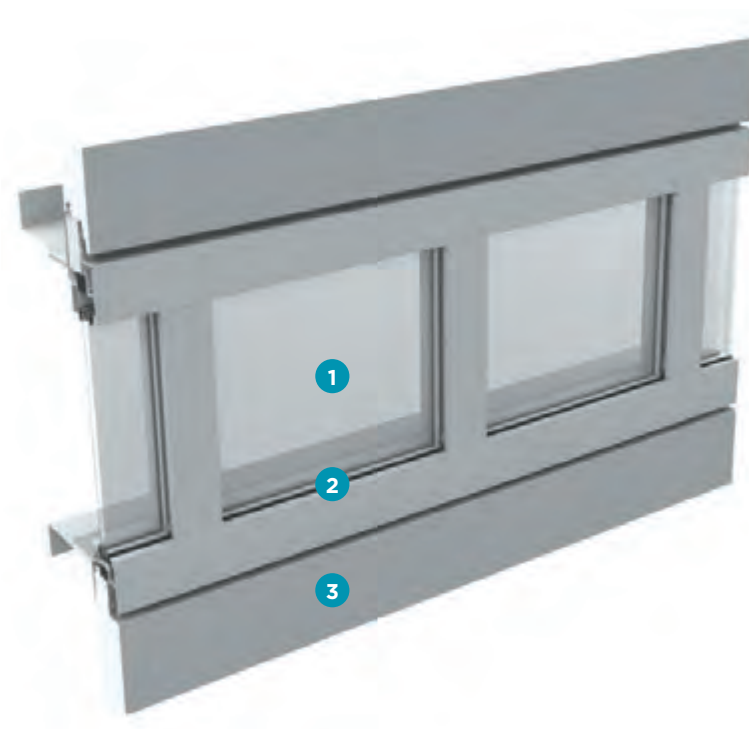


**Type XY Directional Reveals**

(Up to 11 Type Y reveals and one Type X reveal available)

# FORMAVUE™

Formavue window systems provide innovative integration, resulting in a high performance, thermally efficient window/panel interface for Formawall Dimension Series and Formawall Graphix Series panels.



## FV 600 FORMAVUE WINDOW

- 1 Window system eliminates receptor extrusions, provides easier and faster jobsite coordination, and is system tested to ensure superior weather resistance
- 2 Inside glazing options allow easier access for installation or glass replacement; R-value up to 3.5
- 3 Advanced, thermally-improved design features a thermal barrier that minimizes through-metal conductivity, while maintaining structural integrity tested CRF value of 65

## FORMAVUE WINDOW SYSTEMS

SYSTEM	TUBE	STUD	SHOP ASSEMBLED	FIELD ASSEMBLED	VERTICAL PANELS	HORIZONTAL PANELS	INTEGRATES WITH
FV 100	✓	✓		✓	✓		2" [51 mm] thick panel
FV 200		✓		✓		✓	2" [51 mm] & 3" [76 mm] thick panels
FV 300	✓			✓		✓	2" [51 mm] & 3" [76 mm] thick panels
FV 400	✓			✓		✓	2" [51 mm] & 3" [76 mm] thick panels
FV 500	✓	✓	✓			✓	2" [51 mm] & 3" [76 mm] thick panels
FV 600	✓	✓	✓	✓		✓	3"-T [76 mm] thick panels
FV 600 KD	✓	✓		✓	✓	✓	3"-T [76 mm] thick panels
FV 650	✓	✓	✓			✓	2.5" [64 mm] thick panels

All Formavue window systems are designed to accept 1" [25mm] insulating glass.

FORMAWALL

## SMART-R™ WALL SOLUTION

The Smart-R Wall Solution utilizes CENTRIA's Formawall insulated composite metal panels, pressure-equalized vertical and horizontal joinery and integrated components such as Formavue windows, Kalwall windows and C/S Louvers to achieve a high level of thermal and moisture protection while maintaining consistent sight lines without the use of additional receptors and minimizing the amount of materials required to construct a wall.



Erie County Medical Center  
Buffalo, NY  
IKM, Inc. Architects & Kideney Architects

### FEATURES & BENEFITS

#### DESIGN

- Systems approach to high-performance architectural cladding
- Seamless integration of Formawall Dimension Series and Graphix Series panels, windows, louvers and sunshades provides sleek sight lines at component joinery intersections
- IMV joint provides unrivaled architectural foam panel aesthetics
- Design flexibility with 2.5" [64mm] and 3"-T [76mm] thick Formawall Dimension Series DS58, DS59 and DS60 profiles and Formawall Graphix Series panels

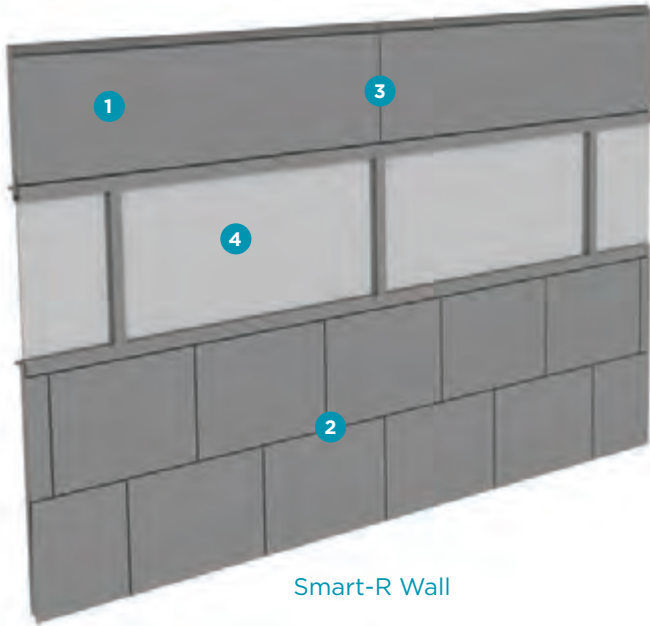
#### PERFORMANCE

- The 2.5" [64mm] FWDS panels and FV 650 window platform along with the 3"-T [76mm] FWDS panels and FV 600 window platform offer enhanced building envelope performance

- A combination of concealed shop- and field-applied sealants as well as the Pressure-equalized (horizontal and vertical joinery) Seal Plate specifically address critical air and water seals by providing consistency, redundancy and a degree of post inspection
- Shop-assembled windows reduce the risk of air and water failures by simplifying the installation process

#### SUSTAINABILITY

- Integrated wall system reduces the amount of material used
- Engineered composite foam panels, integrated accessories and factory-assembled windows reduce jobsite waste
- High-performance wall system improves the overall air, water and thermal performance



Smart-R Wall

**PERFORMANCE OPTION FOR  
3"-T, FV 600 AND IMV**



**Formawall PE Seal Plate\***

- Multiple lines of defense against water infiltration
- Vented, pressure-equalized drain channel minimizes the force that may drive water through the wall system
- An inspectable seal on the interior after the panels are installed

Patent No.: US 8,261,499, US 8,474,202

\*Available only with 3"-T [76 mm] panels and FV 600 windows. Contact CENTRIA for availability.



**1  
2.5" [64mm] and 3"-T [76mm] Formawall Dimension Series insulated metal panels**

- Available with all popular Formawall profiles
- Seamlessly integrates with louvers and sunshades
- 2.5" [64 mm] panels integrate with FV 650 windows and 3"-T [76 mm] panels integrate with FV 600 windows
- Pressure-equalized, thermally maximized side joint
- 2.5" [64 mm] - R17 and 3"-T [76 mm] - R22 per ASTM E C 1363



**3  
Formawall IMV insulated metal vertical joint**

- No exposed gaskets or sealants. All metal, horizontal and vertical joinery
- Added aesthetic flexibility
- Also available with pressure-equalized (PE) seal plate

Patent No.: US 8,661,756



**2  
2.5" [64 mm] and 3"-T [76 mm] Formawall Graphix Series insulated metal panels**

- Aesthetic flexibility
- Reduced chance of air and water infiltration
- Installation savings



**4  
FV 600 and FV 650 Formavue windows**

- Shop-assembled, integrated punched or strip window system. Also available as field assembled, FV 600 KD
- Available on studs or thru-tube supports
- Seamlessly integrates with 2.5" [64mm] and 3"-T [76mm] Formawall
- Enhanced thermal performance
- R3.5\*

\* 1" IGU with soft coat Low-E and argon gas

# INTEGRATED SOLUTIONS

CENTRIA's innovations have led to cutting edge developments in integration. The Formawall Dimension Series and Graphix Series wall panels are just the start—we offer a complete system of components that includes windows, sunshades and louvers; textured finishes like Duracast, along with sleek stainless steel surfaces; and design options such as variable striations and variable reveals are also available.



## FORMAVUE™ WINDOWS

Seven distinct styles of Formavue windows integrate seamlessly with Dimension Series panels and accommodate a variety of fenestrations and construction types.



## C/S SUNSHADES

CENTRIA and Construction Specialties, Inc. (C/S Group) join forces to provide a wide selection of sunshades engineered for seamless and thermally isolated integration with Formavue windows and Dimension Series panels.



## C/S LOUVERS

CENTRIA and C/S Group also provide a full line of fixed, drainable and storm-resistant louvers engineered for seamless integration with Dimension Series panels.



## KALWALL® TRANSLUCENT WINDOWS

CENTRIA and Kalwall Corporation have co-designed this Formawall Dimension Series Integrated Translucent Window System. Designed to install easily with CENTRIA 2", 2-1/2" or 3"-T Formawall Dimension Series panels, these lightweight and strong window systems combine the beauty and good sense of diffused, natural interior lighting with the functional qualities of high insulation, shatterproof construction and low maintenance.



## FINISH OPTIONS

### DURACAST® TEXTURED FINISH SYSTEM

Dimension Series panels coated with CENTRIA Duracast finish, which uses a silica aggregate, provides a rugged, natural look. Duracast is available in eight natural earthtones and comes with an exclusive 20-year warranty.



### STAINLESS STEEL

- No. 4—A brushed finish



## DESIGN OPTIONS

### VARIABLE STRIATIONS

- Striation bands are 6" [152mm] wide
- A minimum 1" [25mm] smooth band between striation bands
- Striations can run out to both edges
- Striations can be as far from the face edge as desired in 1/4" [6mm] increments



## AESTHETIC OPTIONS

### VARIABLE REVEALS

A variable reveal adds visual appeal and accentuates scale for CENTRIA's Formawall Dimension Series metal wall panels. The ability to adjust the width of the reveals from 1/2" [13mm] to 6" [152mm] in half-inch increments is one more way CENTRIA helps architects create truly innovative aesthetics.



Standard reveal color to match panel; optional colors as shown.

# VERSAWALL® & VERSAPANEL®

Commercial/Industrial Wall & Roof Systems

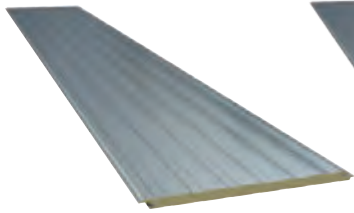
With their long length, light weight and versatility, Versawall insulated wall panels and Versapanel insulated wall and roof systems offer reduced framing costs, remarkable strength, and outstanding weather resistance, insulation and moisture protection. The long panel lengths make Versawall and Versapanel systems perfect for low- and mid-rise buildings such as shopping centers, schools and warehouses. Versapanel's seam also creates an impactful design element when used as a roofing solution.



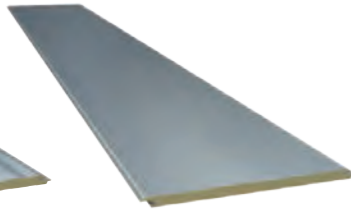
Stroh Center  
Bowling Green, OH  
Rossetti

## VERSAWALL PANELS

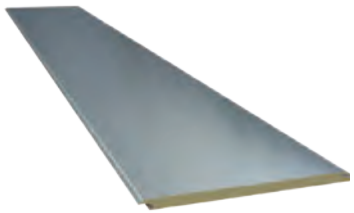
All panels available embossed and flat, striated or planked.



**Versawall Planked**  
2" [51mm]  
2.75" [70mm]  
4" [102mm]

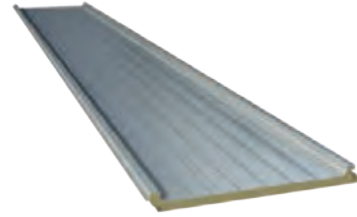


**Versawall Striated**  
2" [51mm]  
2.75" [70mm]  
4" [102mm]

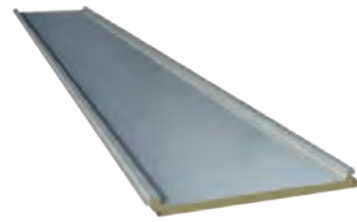


**Versawall Flat**  
2" [51mm]  
2.75" [70mm]

## VERSAPANEL WALL & ROOF PANELS



**Versapanel Planked**  
1.75" [44mm]  
2.5" [64mm]  
4" [102mm]



**Versapanel Flat**  
1.75" [44mm]  
2.5" [64mm]

### FEATURES & BENEFITS

- Lightweight panels lower installation costs
- Increased span capability reduces support steel requirements
- Thermal break between face and liner saves energy
- With factory-applied air and vapor sealing, insulated metal plates provide outstanding weather resistance
- Versawall can be used for interior partitions
- Available with factory-formed sheet metal flashing or extruded aluminum trim
- Versapanel's snap-on cap conceals joint for a seamless appearance (required on roofs)

### DESCRIPTION

Factory foam-insulated wall and roof panel system

### SUBSTRATES

- Standard — 26/26 G-90 galvanized steel face and liner with HCFC-free foam insulated core
- Gage restrictions may apply based on thickness or texture. Consult CENTRIA for more information.

### JOINERY

- Double tongue-and-groove joinery with factory-applied air and vapor seal

### SURFACE FINISH

- Versawall Exterior — Non-directional embossing, flat, striated or planked
- Versapanel Exterior — Non-directional embossing, planked or flat
- Interior — Non-directional embossing, planked
- Optional Duracast textured finish is available for Versawall and Versapanel wall applications; consult CENTRIA for panel length options

### COATINGS & COLORS

Available in a wide range of coil coated colors and finishes. See charts on pages 45-49

### SPECIAL APPROVALS

- Dade County (Missile Impact Resistance)

PANEL TYPE	APPLICATION	THICKNESS [MILLIMETERS]	R-VALUE ASTM 1363	LENGTH [METERS]	WIDTH [MILLIMETERS]
Versawall	Vertical	2" [51mm] 2.75" [70mm] 4" [102mm]*	R-14 (U=.069) R-20 (U=.049) R-26 (U= .039)	6' - 40' standard [1.83m-12.19m] 48' [14.63m] max. Consult CENTRIA	30" [762mm] & 36" [914mm]
Versapanel	Vertical	1.75" [44mm] 2.5" [64mm] 4" [102mm]*	R-14 (U=.069) R-19 (U=.052) R-32 (U=.031)	6' - 40' standard [1.83m-12.19m] 48' [14.63m] max. Consult CENTRIA	36" [914mm]

R-values are based on ASTM C1363 testing. Air films are included.

\*4" [102mm] not available in flat panels.

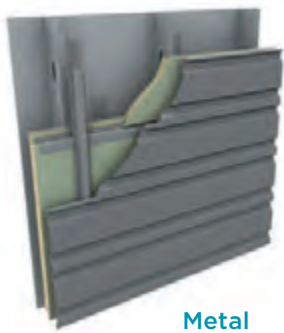


VA Pittsburgh Research Office Building  
Pittsburgh, PA  
Astorino

# METALWRAP™ SERIES

## Insulated Composite Backup Panel System

MetalWrap Series' innovative building envelope technology makes it the ultimate insulated composite backup panel. Featuring integrated rail or integrated masonry attachments and proven liner side seal technology, MetalWrap Series is the perfect solution for virtually any type of exterior rainscreen systems, from single skin metal and ACM, to brick, stucco, terra cotta and a wide range of other exterior cladding products.



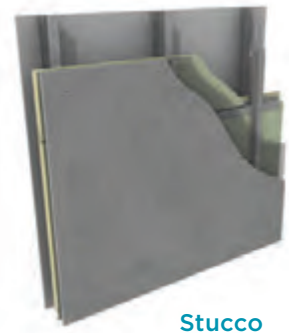
Metal



Brick



Terra Cotta



Stucco

### FEATURES & BENEFITS

- Provides an air barrier, vapor and moisture control, drain plane and thermal performance in one composite assembly
- Minimizes the potential for water penetration, air infiltration and thermal bridges
- Encloses the building faster in all weather conditions
- Works well for all building types in all climates
- The flexibility to be installed both horizontally and vertically
- Assembly thermal performance achieves U-factors that meet or exceed ASHRAE requirements
- MetalWrap with different wall assemblies meets requirements for NFPA 285 multi-story fire test
- Fully tested for air and water infiltration

### DESCRIPTION

#### HORIZONTAL INSTALLATION

	METAL, BRICK, TERRA COTTA, STUCCO
Thickness	2" [51mm], 3" [76mm]
Width	32" [813mm], 36" [914mm]
Length (Std.)*	12' [3.7m] or 20' [6.1m]
Face	29 gage [0.36mm] Galvalume w/ primer
Liner	29 gage [0.36mm] Galvalume w/ primer
Foam Insulation	Min. 2.4 pcf polyisocyanurate
R Value	2" [51mm] - R-14 (U=.079) 3" [76mm] - R-21 (U=.049)

#### VERTICAL INSTALLATION

	METAL, BRICK, TERRA COTTA
Thickness	2.75" [70mm], 4" [102mm],
Width	36" [914mm],
Length (Std.)*	12' [3.7m], or 20' [6.1m],
Face	26 [0.36mm], gage G90 galvanized steel w/ primer
Liner	26 [0.36mm], gage G90 galvanized steel w/ primer
Foam Insulation	Min. 2.4 pcf polyisocyanurate
R Value	2.75" [70mm] - R-20 (U=.049) 4" [102mm] - R-26 (U=.039)

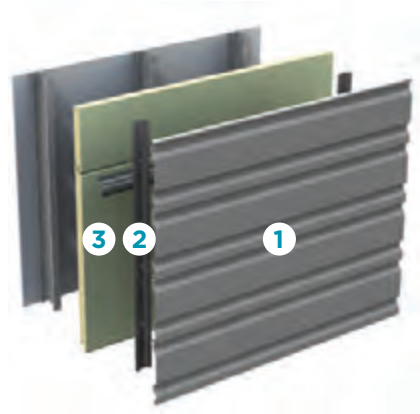
\*Custom lengths 6' - 45' available. Consult CENTRIA.

# METALWRAP SERIES Components

## SINGLE COMPONENT VS. MULTI-COMPONENT

With its single component construction, MetalWrap is a vast improvement over traditional multi-component building technology. A single component means a single source of responsibility, including less coordination, fewer scheduling and interface issues, and one-step installation by one contractor. Together, this adds up to a faster, more efficient construction process.

### METALWRAP SERIES



- 1 Exterior Rainscreen
- 2 Subgirts
- 3 MetalWrap Series with integral attachment system

### TYPICAL BACKUP SYSTEM

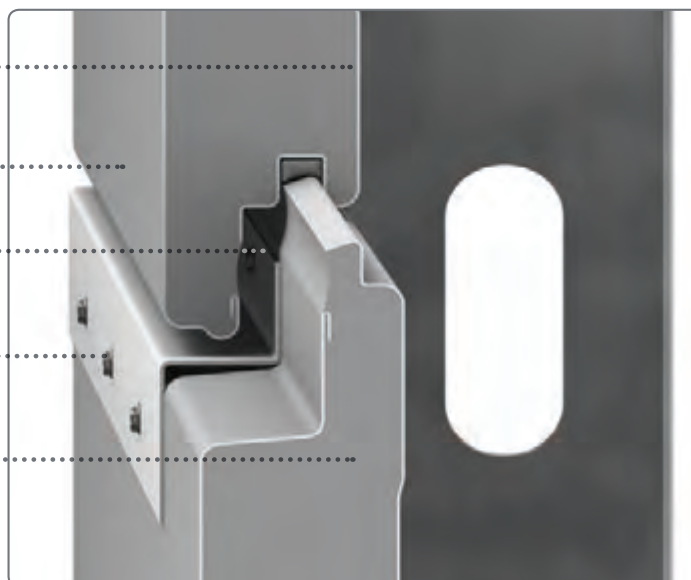


- 1 Exterior Rainscreen
- 2 Zee Support and vertical subgirts (may cause thermal short circuits)
- 3 Insulation
- 4 Air and Vapor Barrier
- 5 Exterior Sheathing

## METALWRAP SERIES PANELS UP-CLOSE

MetalWrap achieves building code compliance with its integrated composite panel design. This construction eliminates the need for conventional batt or board insulation, exterior gypsum, air barriers, vapor retarders and building wraps.

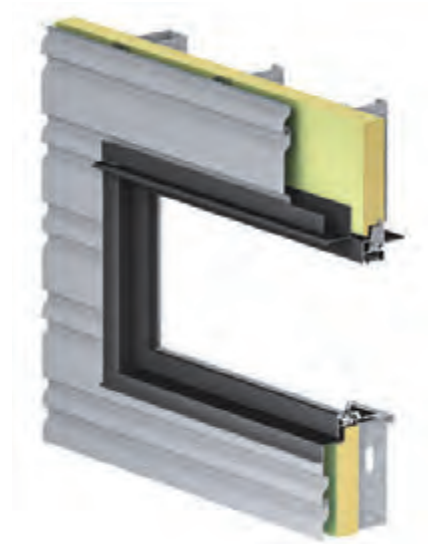
- Metal liner provides air and vapor barrier
- Durable metal drain plane
- Pressure-equalized horizontal joinery
- MR-100 integral attachment system
- R-14 or R-21 tested assembly insulation



## INTEGRATED WINDOWS AND LOUVERS

### WINDOWS

MetalWrap is the only insulated composite backup panel with an integrated window system, CENTRIA's Formavue 600. This window further enhances air and water performance and reduces risks for both the architect and the building owner. The windows also feature large thermal breaks aligned with the panel insulation, as well as additional insulation in the head of the window frame for one of the most efficient systems on the market today.



### LOUVERS

Developed in conjunction with the C/S Group, Inc., the MetalWrap integrated louver system is designed for large areas where louvers are an architectural feature. The system utilizes storm resistant MW-7315 front blades over horizontal MetalWrap Series and MR-300 in the inactive louver area. Both the attachment system and the panel face are painted black, which provides a seamless transition between the active and inactive louvers.



# INTERCEPT™

## Modular Metal Panel System

The Intercept Modular Metal Panel Systems offer excellent aesthetics, performance, sustainability and value. Made of pre-painted, light gage aluminum or natural finish metals, Intercept panels can be configured in almost limitless ways, require little-to-no maintenance and offer a long product life cycle, making them an extremely economical solution for even the most complicated façade designs.



Intercept Modular Metal Panel System featuring multi-planar and sloped panel types.



## INTERCEPT V-TRAC PANEL SYSTEM

### DESCRIPTION

Concealed fastener system panels are installed sequentially over a vertical carrier track (gullwing) and are suspended from the top using a clip attachment and panel ends

**PANEL REVEAL WIDTH**  
3/4" [19mm] (standard)

**PANEL DEPTH**  
1 1/2" [38mm]

**PANEL SHAPES**  
• Square, rectangular and curves

### COATINGS & COLORS

*Available in a wide range of coil coated colors and finishes.  
See charts on pages 45-49*





## INTERCEPT ENTYRE PANEL SYSTEM

### FEATURES & BENEFITS

- Nearly 100% recyclable
- Domestic aluminum and zinc materials available
- Vertically integrated manufacturing ensuring on-time delivery and quality
- Can be complemented by an assortment of other CENTRIA rainscreen products
- Available with CENTRIA's MetalWrap Insulated Composite Backup Panel for a complete weather tight wall assembly
- Available with CENTRIA's extensive palette of PVDF coatings, including Allusion, Allura and Kolorshift

### DESCRIPTION

Continuous, extruded engagement flange and concealed fasteners work in conjunction with sequentially installed panel units to ensure crisp, consistent reveal lines and quick installation.

### PERFORMANCE

- Closed joint true rainscreen offers venting at panel reveals
- Pressure equalized joint design
- Independent panel attachment

### INSTALLATION SEQUENCE

- Bottom up\*

### INSTALLATION PATTERNS

- Vertical and/or horizontal orientation
- Variable running bond—vertically and horizontally

### PANEL REVEAL WIDTH\*\*

- 3/4" [20mm]

### PANEL DEPTH\*\*\*

- 1 3/8" [35mm]

### PANEL SHAPES

- Square or rectangular
- Multi-planar
- Sloped

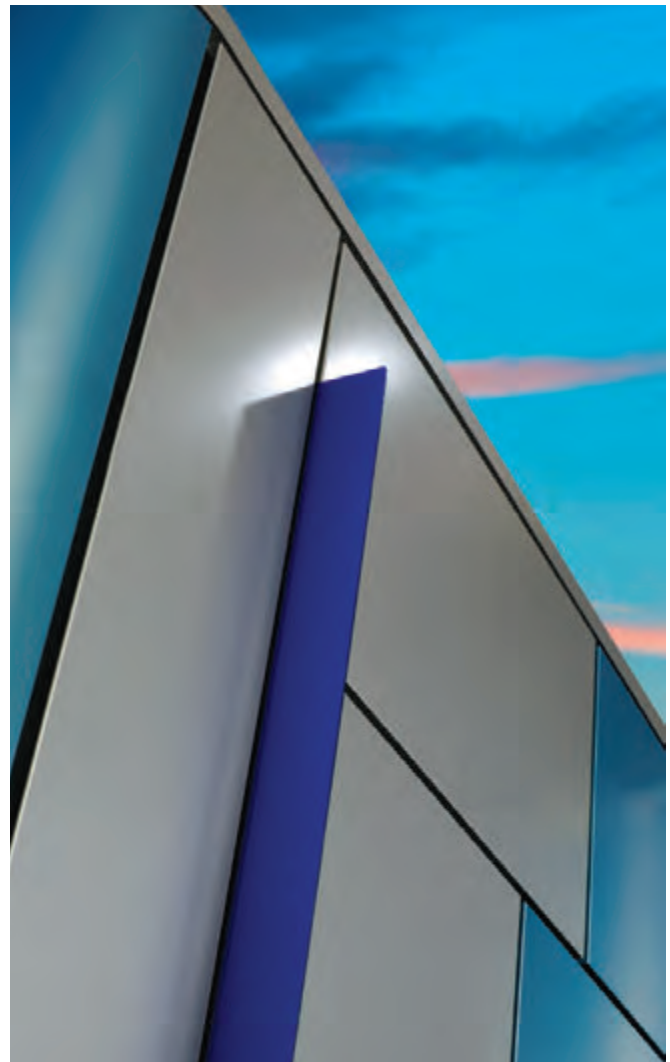
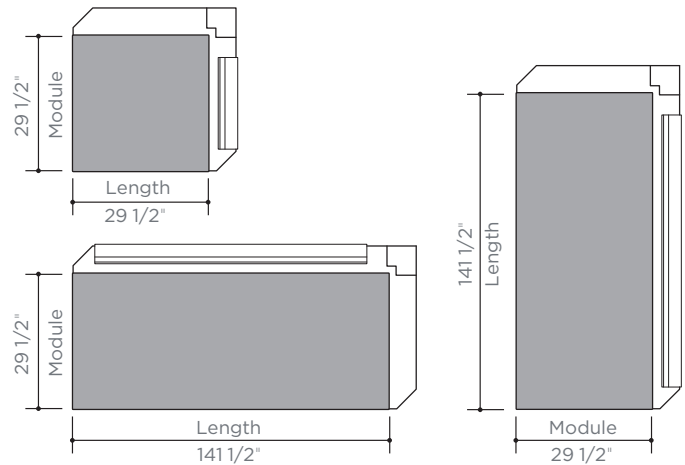
\* Panels can be installed left to right, right to left or from the center out to suit fast-tracked projects.

\*\* Various horizontal and vertical reveal options available.

\*\*\* Panel depths available from 1 3/8" to 4"  
Contact CENTRIA for details.

### MAXIMUM ENTYRE PANEL SIZES

CENTRIA recommends the maximum panel sizes shown for **Intercept Entyre Panels**. Please contact CENTRIA if your dimensions exceed these recommendations.



# FORMABOND® & FORMABOND® II

## Aluminum and Metal Composite Wall Systems

CENTRIA has revolutionized the metal composite material (MCM) industry with FORMABOND. Using CENTRIA's proprietary reaction injection molding process, FORMABOND panels are stronger and flatter with excellent bond strength and impact resistance. Smooth and sleek, FORMABOND II offers excellent value, superior flatness and crisp sight lines.



Regional Transportation Management Center  
New Orleans, LA  
Sizeler Thompson Brown Architects



## FORMABOND

### FEATURES & BENEFITS

- Superior flat panel with crisp and sharp sight line aesthetics
- Low maintenance created by dry seal joinery and installation
- Proven pressure-equalized rainscreen joinery design, tested in accordance with AAMA 508 and 509
- Joinery design provides a ventilated cavity along each horizontal joint while minimizing water penetration
- Installation time and effort
  - No staining or face washing of the sealant
  - No dirt traps
  - Breathable system
- Single source manufacturing
  - CENTRIA coil coated finishes yield unmatched finish selection
  - CENTRIA manufactures both the planks and system ensuring the highest quality and on-time deliveries

### DESCRIPTION

Pre-formed aluminum composite architectural wall panel system

#### SUBSTRATE & CORE

- Metal — 0.02" [.51mm] nominal aluminum face and liner; 0.032" [0.81mm] optional
- Core — Highly cross-linked polymer
- 8mm sheet thickness
- 2 11/16" [33.5mm] system thickness
- Flat ACM panel system

#### JOINERY

- All dry seal construction that is pressure equalized and provides ventilation to the inner wall cavity

#### SURFACE FINISH

- Smooth or stucco embossed surface finish

#### PANEL WIDTH

- Up to 60" [1.52m] for smooth or embossed textures

#### PANEL LENGTH

- Up to 180" [4.57m]

#### VARIABLE REVEALS

- Horizontal Reveals — 1/2" [13mm] - Standard; 1" [25mm] to 6" [152mm] in 1/2" [13mm] increments - Optional. May also be colorized.
- Vertical Reveals — 1/2" [13mm] - Standard; 5/8" [25mm] to 6" [152mm] in 1/2" [13mm] increments - Optional. May also be colorized.

#### COATINGS & COLORS

Available in a wide range of coil coated colors and finishes. See charts on pages 45-49.

#### PERFORMANCE

- High performance air and water ratings
- Pressure-equalized joinery
- AAMA 508-05 and 509-09



## FORMABOND II

### FEATURES & BENEFITS

- Superior flat panel with crisp and sharp sight line aesthetics
- Lightweight panel system, compliant with industry standards
- Dry seal joiner requires no maintenance
- High performance panel system tested in accordance with AAMA 508 and 509
- Metal spline available at vertical joint for all metal construction and no exposed sealants

### DESCRIPTION

Available in a variety of colors and coating systems, CENTRIA FormaBond II is a smooth panel with a sleek, flat design offering crisp corner transitions or soft, flowing curves

#### SUBSTRATE & CORE

- Metal — 0.020" [.5mm] nominal thickness aluminum face and liner
- Polyethylene and fire-rated cores available
- 4mm system panel thickness, 2-1/2" [64mm]
- 6mm system panel thickness, 2-5/8" [64mm]
- Flat MCM panel

#### JOINERY

- All dry construction
- High performance drained and back ventilated system
- Open side joint allows ventilation behind the rainscreen
- Drain shelf at top edge of panel minimizes water penetration
- Metal spline and gasket vertical joint options

#### SURFACE FINISH

- Smooth

#### PANEL WIDTH

- 6" [152mm] to 60" [1.52m]

#### PANEL LENGTH

- Up to 180" [4.57m]

#### PANEL REVEALS

- Horizontal Reveals — 1/2" [13mm] - Standard; 5/8" [25mm] to 6" [152mm] - Optional. Contact CENTRIA for other size options.
- Vertical Reveals — 1/2" [13mm] - Standard; 1" [25mm] to 6" [152mm] - Optional. Contact CENTRIA for other size options.

#### PERFORMANCE

- High performance air and water ratings
- AAMA 508-07
- AAMA 509-09

#### COATINGS & COLORS

Standard colors for FormaBond II are from plank supplier and are not CENTRIA standard colors.

Contact CENTRIA for coating options.

# PROFILE™ SERIES

Single Skin Metal Wall Panel Systems

Profile Series makes inspiring designs come to life with highly aesthetic, high performance panels that are also highly cost-effective.



Tupelo Aquatic Center  
Tupelo, MS  
Johnson Bailey Henderson McNeil

# PARADIGM™

## Custom Fabricated Metal Panels

Paradigm makes it possible to create truly unique custom profiles in almost unlimited color and finish options. The result is design flexibility and control, as well as a cost-effective way to add distinctive accents to your next project.

### FEATURES

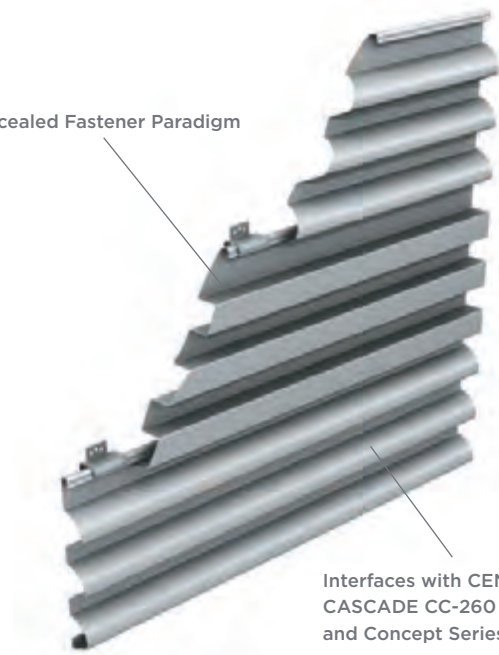
- Designer customized panel profile shapes
- Concealed fastener and exposed fastener profiles available
- Custom engineered panels with load calculations and Professional Engineer stamps
- State-of-the-art production process
- Vertical or horizontal installation
- Exposed fastener and concealed fastener profiles available
- Available in smooth or stucco embossed finishes
- Select from CENTRIA's color and finish options
- All-weather installation capability
- CENTRIA Consultative Service

### BENEFITS

- Unique project specific aesthetics and flexibility
- Confidence that panels meet load and code requirements of the project
- Ensures crisp and consistent panel fabrication quality
- Permits variation in design and shadow relief
- Ability to match and complement other material textures
- More than 85 standard colors and 11 finish options available along with custom color availability
- Minimizes delays and permits fast-track scheduling
- Our sales team, along with a dedicated group of in-house engineers, architects and building scientists are available to assist in making your product vision a reality

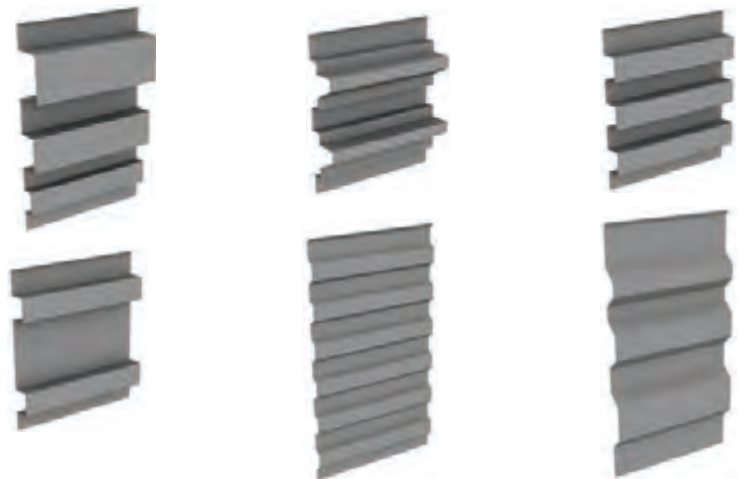
Contact your local CENTRIA representative for additional Paradigm product information.

Concealed Fastener Paradigm

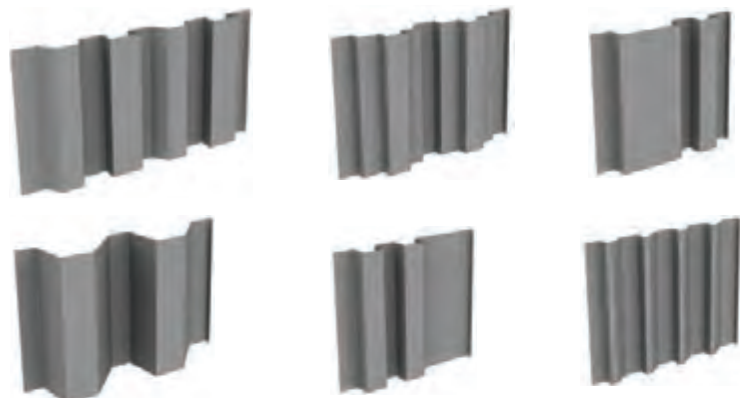


Interfaces with CENTRIA's CASCADE CC-260 panel (shown) and Concept Series panels

### HORIZONTAL



### VERTICAL

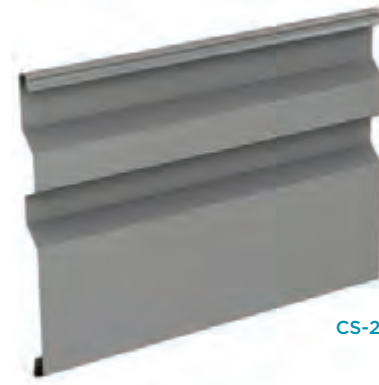


PROFILE SERIES

# CONCEPT SERIES®

## Concealed Fastener Panels

Concept Series single-skin panels make inspiring custom aesthetics possible with a combination of concealed fasteners and a common lock joint that can be interchanged. Featuring a wide range of profiles, Concept Series panels work well for both insulated and uninsulated walls.



CS-220



Lumberton Municipal Utility District Office  
Lumberton, TX  
Long Architects

### FEATURES & BENEFITS

- Panels may be installed vertically or horizontally\*
- Common lock joint allows panels to be mixed freely for custom-like aesthetics with other Concept Series panels and our Cascade panels.
- Concealed clips and fasteners
- Cost effective with a clean, unbroken appearance allowing for interesting visual effects
- Excellent for new construction and retrofit projects
- All-weather installation capability shortens installation time, permits fast-track scheduling
- Panels are available with stucco-embossed or smooth finishes
- May be insulated to meet many levels of thermal protection
- Concealed extended leg option
- EcoScreen for CS-260 and CS-660 profiles
- Profile Louvers for CS-260 and CS-660 profiles

### DESCRIPTION

#### SUBSTRATES

- Standard 24\*\*-18 gage G-90 galvanized steel
- Galvanized steel, steel, aluminum, zinc or stainless steel—optional
- Smooth or embossed surface texture

#### CONCEPT SERIES PROFILES

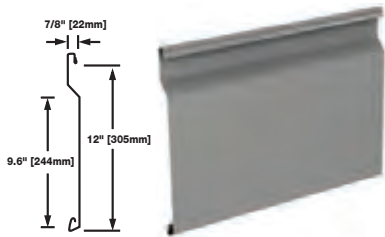
- Lengths up to 30' [9.14m] for steel panels
- Concealed clips and fasteners
- Stand-off clips provide ventilation cavity and continuous drain plane behind panel
- Concealed extended leg option

#### COATINGS & COLORS

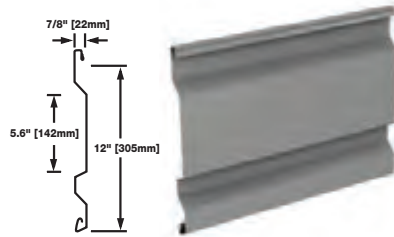
*Available in a wide range of coil coated colors and finishes. See charts on pages 45-49*

Patent No.: US D538,948; D527,834

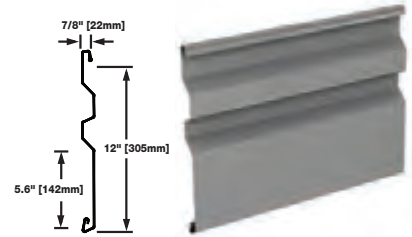
CS-200



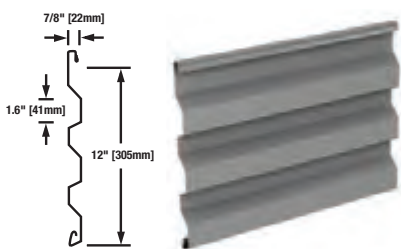
CS-210



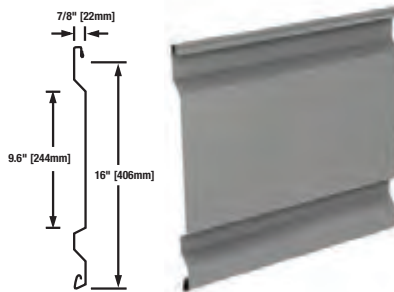
CS-220



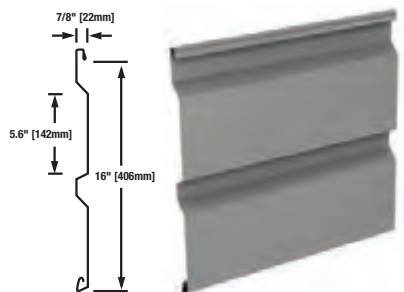
CS-260



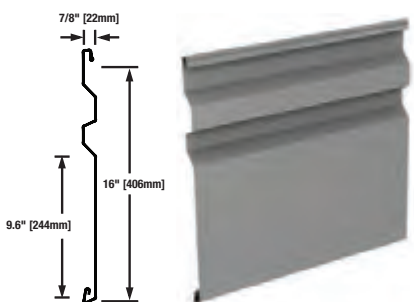
CS-610



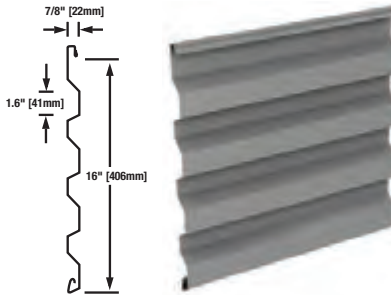
CS-620



CS-630



CS-660



“Oil canning” is an inherent part of light gage cold-formed metal products, particularly those with broad flat areas. CENTRIA takes every precaution, as defined by MCA, to minimize the effects of oil canning. Lack of flatness or waviness due to oil canning is not sufficient cause for rejection of material

\*\* 24 gage only available in certain profiles. Consult CENTRIA.



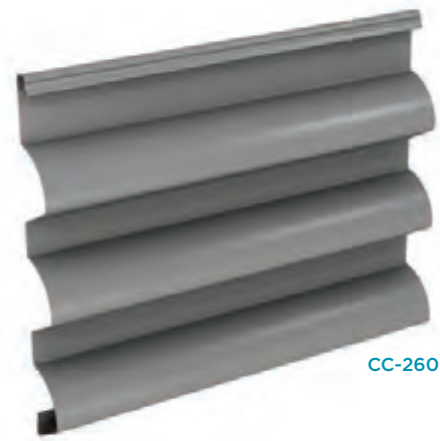
Neil Armstrong Academy  
West Valley, UT  
Naylor Wentworth Lund Architects

PROFILE SERIES

# CASCADE™

Metal Panel System

CASCADE interchangeable single-skin metal panels set a new standard in aesthetics with a striking signature curve and a bold, flat, sloped rib profile. The result is a delicate play of light and shadow relief like no other panel on the market today.



CC-260

## FEATURES & BENEFITS

- Features concealed fasteners and a common-lock joint
- Includes seven unique profile rib panels that work with each other
- All-weather installation capability shortens installation time and permits fast-track scheduling
- The flexibility to insulate the panels offers many levels of thermal protection
- Can be installed vertically or horizontally
- Can be integrated with all eight Concept Series panels
- Distinctive 1-1/2" deep rib consists of a soft curve combined with an angular sloped web for deep shadow relief

## DESCRIPTION

- Panel modules—12" or 16" dependent upon profile selection
- Lengths up to 30' [9.14m] for steel panels
- Concealed clips and fasteners
- Stand-off clips provide ventilation cavity and continuous drain plane behind panel

## SUBSTRATES

- Standard 22-18 gage G-90 galvanized steel
- Galvanized steel, Galvalume® steel, aluminum, zinc or stainless steel—optional
- Smooth or embossed surface texture

## COATINGS & COLORS

*Available in a wide range of coil coated colors and finishes. See charts on pages 45-49*

"Oil canning" is an inherent part of light gage cold-formed metal products, particularly those with broad flat areas. CENTRIA takes every precaution, as defined by MCA, to minimize the effects of oil canning. Lack of flatness or waviness due to oil canning is not sufficient cause for rejection of material.

Patent pending.

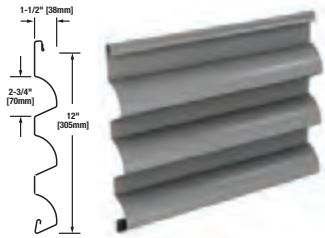


Prairie Mechanical  
Omaha, NB  
SGH. Inc.

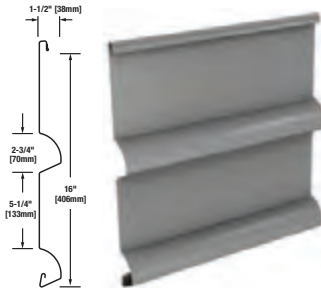


HORIZONTAL

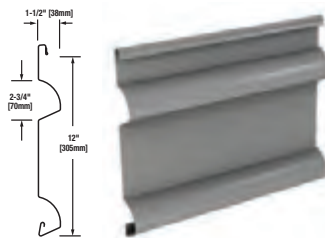
CC-260



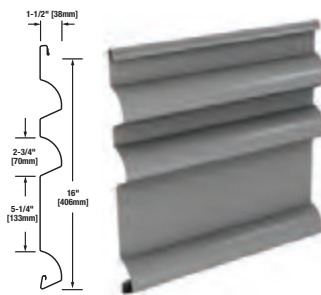
CC-624



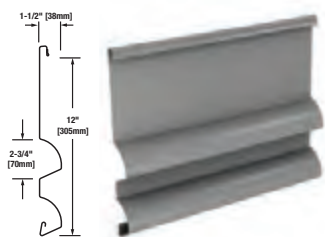
CC-262



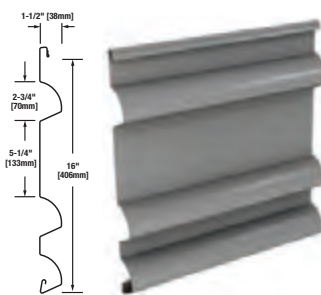
CC-662



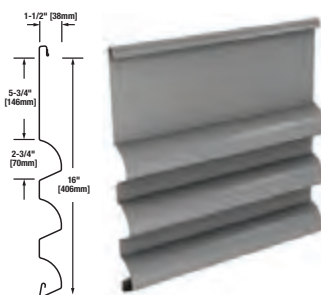
CC-263



CC-663



CC-664

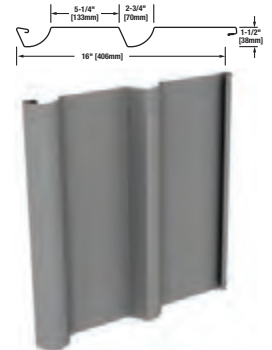


VERTICAL

CC-260



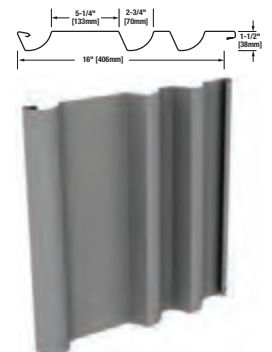
CC-624



CC-262



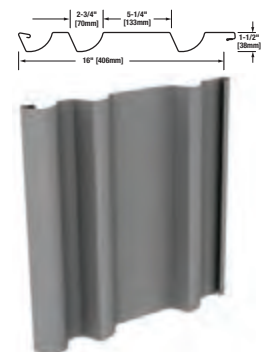
CC-662



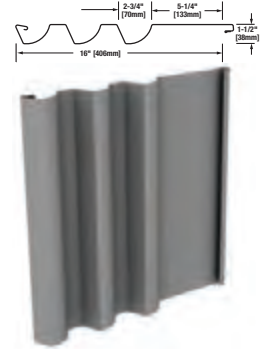
CC-263



CC-663



CC-664



PROFILE SERIES

# IW SERIES

## Concealed Fastener Panels

Unique visual effects are possible with IW Series—featuring concealed fasteners for a clean, unbroken aesthetic. Available in stucco-embossed or smooth finishes, the panels also feature a common-lock joint design.



IW-10A



Westin Hotel  
Birmingham, AL  
Rabun Architects

### FEATURES & BENEFITS

- No exposed panel fasteners
- Cost-effective, with a clean, unbroken appearance
- All panels are interchangeable because of the common-lock joint design which allows for appealing visual effects
- Excellent for new construction and retrofit projects
- All-weather installation capability shortens installation time; permits fast-track scheduling
- May be insulated to meet many levels of thermal protection
- Panels are available with stucco-embossed or smooth finishes and in flush, ribbed, striated and stepped profiles

*Note:* Swaged ends of 2" [51mm] length are available in 20 and 22 gages only. Not available in any gage for IW-12A, IW-14A, and IW-15A.

### DESCRIPTION

#### SUBSTRATE

- Standard 22-18 gage G-90 galvanized steel
- Steel, aluminum, zinc\* or stainless steel—optional

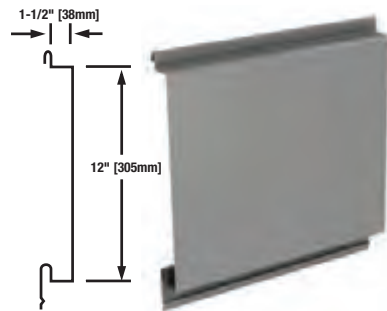
#### IW SERIES PROFILES

- Lengths up to 30' [9.14m] for steel panels
- Horizontal or vertical wall installation
- Common-lock joint design of IW-10A through IW-41A makes panels interchangeable
- Available with MicroSeam® corners for horizontal installation

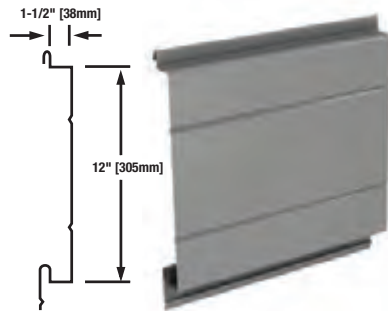
#### COATINGS & COLORS

*Available in a wide range of coil coated colors and finishes. See charts on pages 45-49*

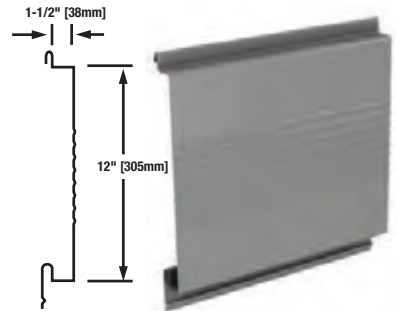
IW-10A



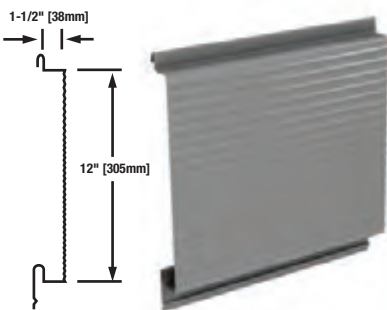
IW-11A



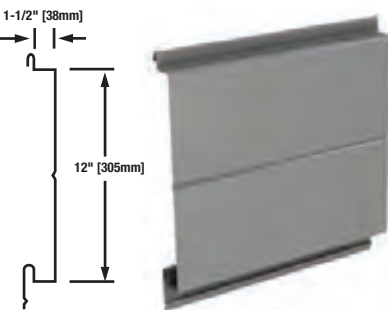
IW-12A



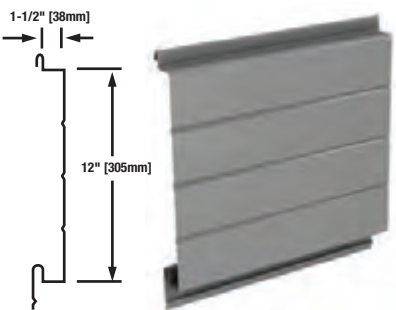
IW-13A



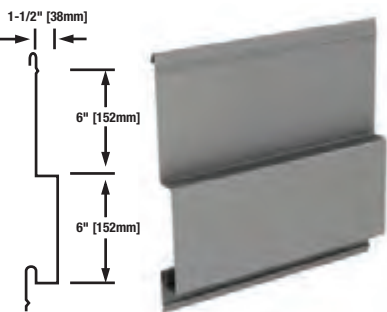
IW-14A



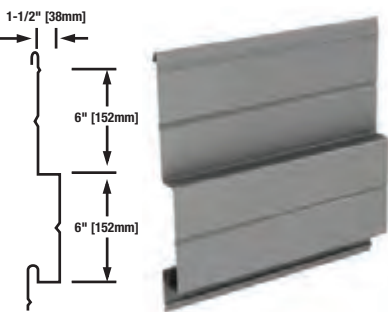
IW-15A



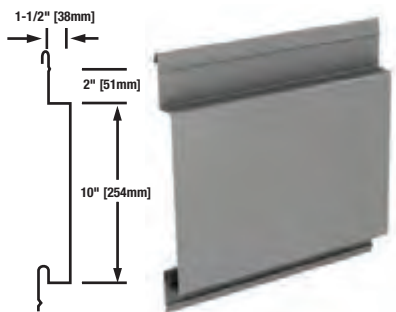
IW-20A



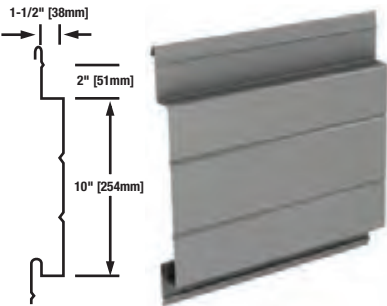
IW-21A



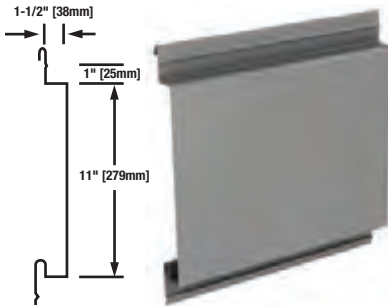
IW-30A



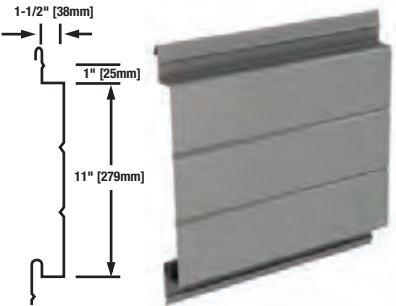
IW-31A



IW-40A



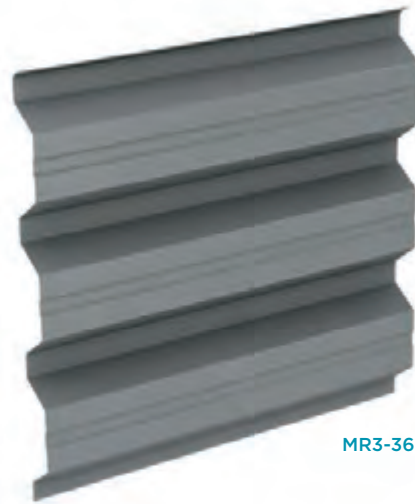
IW-41A



PROFILE SERIES

# EXPOSED FASTENER PANELS

Exposed Fastener panels provide ultimate flexibility with panels that can be used as exterior or interior walls, roofs or soffits.



MR3-36



Kennedy Space Center  
Titusville, FL  
BRPH

## FEATURES & BENEFITS

- Extremely versatile panels can be used as exterior or interior walls, roofs and soffits
- Ribs can be run either horizontally\* or vertically
- May be installed to meet many levels of thermal protection
- Excellent negative wind load properties
- All-weather installation capability minimizes delays; permits fast-track scheduling
- Panels are available in stucco-embossed or smooth finishes

## DESCRIPTION

### SUBSTRATES

- Standard 24\*-18 gage G90 Galvanized Steel
- Aluminum or stainless steel— optional
- Smooth or embossed surface textures

\*24 gage only available in certain profiles.  
Consult CENTRIA.

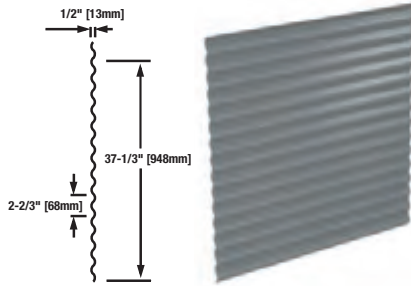
### EXPOSED FASTENER PROFILES

- Horizontal or vertical wall installation
- Wall and roof installation
- Lengths up to 40' [12.19m] for steel panels  
Consult CENTRIA for more information

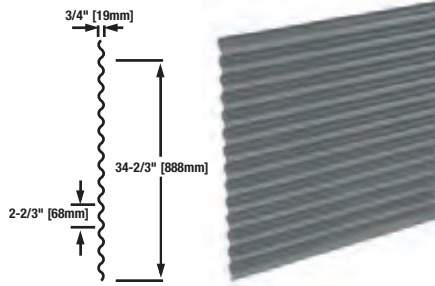
### COATINGS & COLORS

*Available in a wide range of coil coated colors and finishes. See charts on pages 45-49*

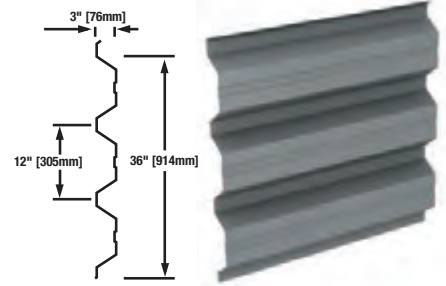
ECONOLAP 1/2"



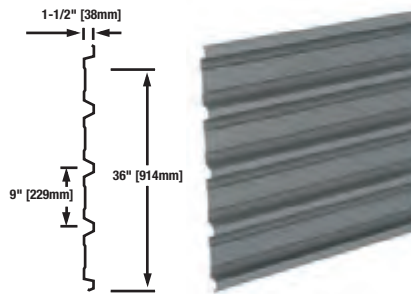
ECONOLAP 3/4"



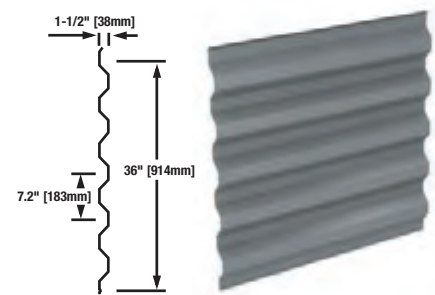
MR3-36



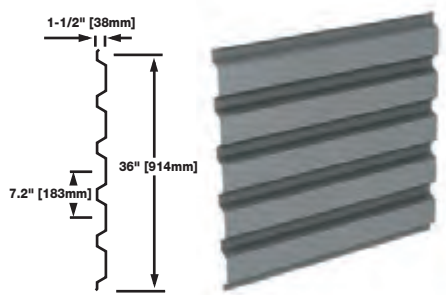
TR4-36



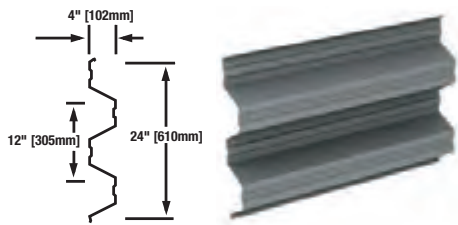
STYLE-RIB



BR5-36



SUPER-RIB



Stage AE  
Pittsburgh, PA  
WD Partners

PROFILE SERIES

# LINER PANELS

## FEATURES & BENEFITS

- Incorporate liner panel, subgirts, varying thicknesses of noncombustible fiberglass insulation and any CENTRIA exposed fastener or concealed fastener panel for a complete field-assembled wall system
- High “R” Values, depending upon insulation
- Provides a flush appearance to building interiors
- Perforated liner panels available for tested acoustical performance
- Firewall systems

## DESCRIPTION

Minimize heat loss or gain to conserve valuable energy with CENTRIA liner panels

### SUBSTRATE

- 24-18 gage G-90 galvanized steel
- Smooth or embossed

### PANEL WIDTH

- 24" [610mm]

### PANEL LENGTH

- 30'-0" [9.14m] max.

### PANEL THICKNESS

- L2—1-3/8" [35mm]
- L2-2—2" [51mm]
- L2-3—3" [76mm]
- L-21A—1-1/2" [38mm] (for interior partitions)

### COATINGS

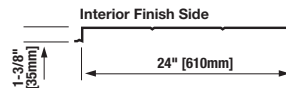
Available in a wide range of coil coated colors and finishes. See charts on pages 45-49



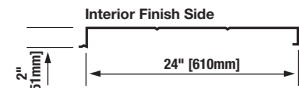
L2-3

## Product Details

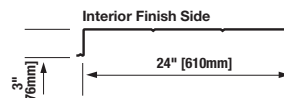
L2



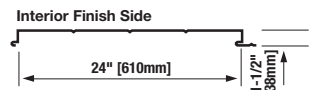
L2-2



L2-3



L-21A



PROFILE SERIES

# QUIETWALL & FIREWALL SYSTEMS

## QUIETWALL SYSTEM

CENTRIA Quietwall systems help you select a wall system with specific sound absorption or transmission loss values that your design requires—more economically and more efficiently.

## FIREWALL SYSTEM

With the CENTRIA firewall system, layers of gypsum board between the exterior Profile panel and the insulation and liner panel create UL one-hour through four-hour firewalls based on ASTM E119 fire tests.

## OTHER SYSTEMS

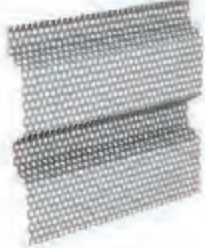
- Explosion Release
- RF Shielding

# ECOSCREEN®

Perforated Screenwall

EcoScreen perforated screenwalls provide an airy aesthetic and a distinctive way to blend industrial and other applications with their surroundings. The perforation pattern is available in a wide variety of options and allows for air circulation and natural light to pass through, while providing additional security and unique aesthetic appeal.

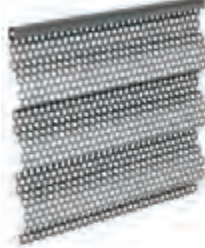
BR5-36



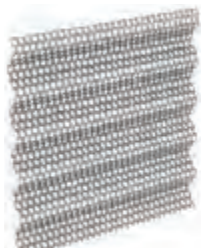
CS-260



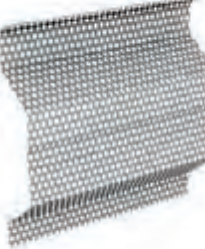
CS-660



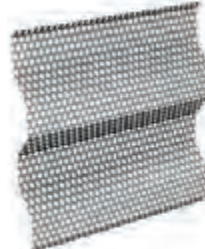
ECONOLAP 3/4"



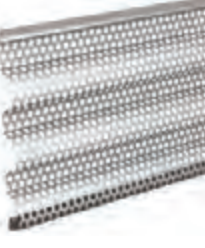
MR3-36



STYLE-RIB



CC-260



CUICAR- Center for Emerging Technologies  
Greenville, SC  
LS3P Neal Prince

### ECOSCREEN PERFORATION PATTERN OPTIONS

Open/Free Area Percentage	Pattern	Diameter (in)	Spacing (in)
<b>10%</b>	<b>Reverse</b>	<b>1/8</b>	<b>3/8</b>
23%	Staggered	1/8	1/4
23%	Reverse	1/4	1/2
30%	Staggered	1/8	7/32
33%	Staggered	3/16	5/16
40%	Staggered	1/8	3/16
<b>40%</b>	<b>Staggered</b>	<b>3/8</b>	<b>9/16</b>

Bold lines are standard. For additional patterns, contact CENTRIA.

Images showing standard 40% open area staggered pattern, 3/8" [10mm] diameter, 9/16" [14mm] spacing.

# DESIGN OPTIONS

Profile Series design options like MicroSeam® Corners, MicroLine™ Extrusions, Profile Louvers and Curved Panels give projects a sleek, finished look or an interesting accent.



## MICROSEAM® CORNERS

MicroSeam Corners use cutting edge structural bonding techniques to produce corners that appear virtually seamless. Manufactured from the same metal substrate coil as the panels, MicroSeam corners employ no welding and no pop rivets. Like all CENTRIA panels, they are fully tested for performance. MicroSeam Corners are available on BR5-36, Econolap 3/4", MR3-36, Style-Rib, Super-Rib, TR4-36, all Concept Series profiles, all CASCADE Metal Panel System panels and all IW Series profiles. They are also available in CENTRIA's full palette of nearly 100 colors, including metallics and Versacor Elite.



## MICROLINE™ EXTRUSIONS

MicroLine details incorporate aluminum extrusions designed to integrate visually and mechanically with CENTRIA Profile Series Concept Series panels and horizontal CASCADE metal panels. Slim 2" [51mm] wide MicroLine extrusions make it a snap to trim and finish around windows and doors, inside or outside corners, and at the base of walls; or to create clean vertical joints. MicroLine details enable you to replace wide, obtrusive flashing and exposed fasteners with narrower, crisper and cleaner finished lines, and can be finished to match or complement wall panels. Also available for horizontal applications of IW Series, CASCADE panels, Style-Rib, BR5-36, Econolap 3/4" and TR4-36. MicroLine details are available for Concept Series profiles in horizontal and vertical applications.





## PROFILE LOUVERS

CENTRIA Profile Louvers come in gages, colors and finishes to match corresponding panels and blend invisibly into a wall, eliminating visual breaks in sight lines. Profile Louvers are available for horizontal installation with BR5-36, Inverted BR5-36, MR3-36, CS-260, CS-660, Style-Rib or Super-Rib wall panels. Variable blade depths from 1-1/2" to 8" [38mm to 203mm] create free area from 10% to 49% for air intake or exhaust.



## CURVED PANELS

With CENTRIA curved panels you can add radius design elements to your projects. They are available in a wide selection of exposed fastener profiles, finishes and colors to match virtually any architectural, commercial or industrial application. Curved panels are ideal for canopies and awnings, roofing, fascia, walls, curved parapets, curved trim, and column and beam wraps, where they can be used to add bold visual statements or innovative special effects. Contact CENTRIA for specific profiles.

CENTRIA fabricates curved panels from a variety of architectural panel profiles. They are available in a number of finishes to match your application, and in the full CENTRIA color palette.

## VENTILATION SYSTEMS

CENTRIA also offers ventilation systems as an aesthetically pleasing way to improve building performance. Options include continuous ridge ventilators, continuous clamshell ventilators and small streamline ventilators



Renaissance Academy  
Virginia Beach, VA  
RRMM Design Build

## Structural Standing Seam Roof Systems

Featuring clean unbroken lines and offering outstanding performance, CENTRIA's classic structural standing seam roof system makes dynamic, inspiring aesthetics possible.

### FEATURES & BENEFITS

- Long panel lengths eliminate transition flashing, enhance weather resistance
- Unique concealed clip and panel interlock design allows unimpeded thermal movement without damage
- Mechanical seaming of roof panels in the field ensures weather resistance and enhances appearance
- UL 580 Class 90 listing
- FM 1-90 and FM-180
- Dade County NOA
- Low slope applications:  
1/2:12 [2.40°] without endlaps  
1:12 [4.76°] with endlaps
- Can be field roll-formed, eliminating endlaps
- SRS 3 can be curved to various radii

### DESCRIPTION

Structural standing seam roof systems

#### SUBSTRATES

- SRS 3—24-18 gage
- Batten maximum 20 gage
- G90 galvanized steel, Galvalume®, stainless steel\*, and aluminum

#### PANEL WIDTH

- 12" [305mm], 16" [406mm], 18" [457mm]

#### PANEL DEPTHS

- SRS 3—3" [76mm]

#### PANEL LENGTH

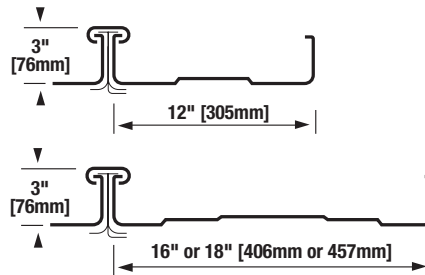
- Standard—Factory-formed—up to 48'0" [14.63m] max. Optional—up to 60'0" [18.29m]
- Field-formed—220'0" [67.06m] max.

Oil canning within industry standard guidelines as defined by MCA is not a cause for rejection.

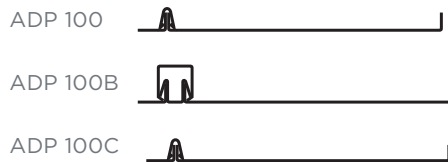
### SRS 3 CURVED

- SRS 3 mechanical curving process
- Available in 12" [305mm], 16" [406mm] and 18" [457mm] widths
- Curving performed on-site or in the plant, using CENTRIA-supplied equipment
- Consult CENTRIA for the minimum radius available for each gage

#### SRS 3 PLANKED



#### Architectural Design Panels\*



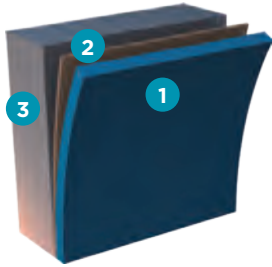
#### Structural Design Panels\*



\*Contact CENTRIA for product substrates and parameters.

# COATING SYSTEMS & SUBSTRATES

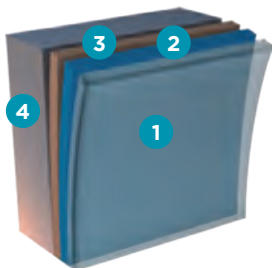
CENTRIA's coating systems produce intensely hued, uniquely textured metal walls and roofs that offer the best in performance to meet the most challenging environmental conditions.



## FLUOROFINISH\*\*

A Kynar 500® or Hylar 5000® coating that provides good durability.

- 1 0.8 mil [20 micron] nominal Color Coat
- 2 0.2 mil [5.1 micron] nominal Primer
- 3 Substrate



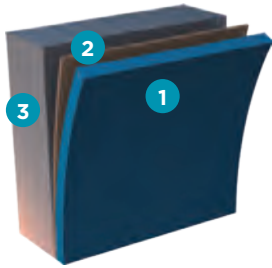
## DURAGARD® PLUS

A premium, high-build architectural coating that provides the ultimate in color retention and fade resistance.

- 1 0.8 mil [20 micron] nominal Polyvinylidene Fluoride Clear Coat\*
- 2 0.8 mil [20 micron] nominal Polyvinylidene Fluoride Color Coat\*
- 3 0.8 mil [20 micron] nominal Primer
- 4 Substrate

## DURAGARD®

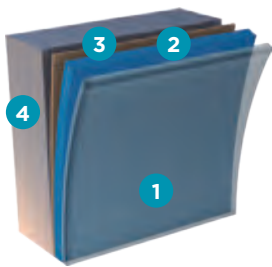
0.8 mil [20 micron] nominal Polyvinylidene Fluoride Color Coat\*  
0.8 mil [20 micron] nominal Primer



## SUNDANCE MICA® 2-COAT FINISH

A high performance PVDF coating that provides good durability.

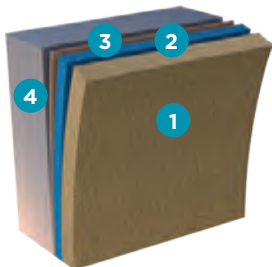
- 1 0.8 mil [20 micron] nominal Color Coat
- 2 0.2 mil [5.1 micron] nominal Primer
- 3 Substrate



## SUNDANCE AM — ALUMINIUM METALLIC 3-COAT FINISH

A quality, durable coating that provides the iridescence and reflectivity of a metallic surface.

- 1 0.5 mil [12.7 micron] nominal Polyvinylidene Fluoride Clear Coat\*
- 2 0.8 mil [20 micron] nominal Polyvinylidene Fluoride Color Coat\*
- 3 0.2 mil [5.1 micron] nominal Primer
- 4 Substrate



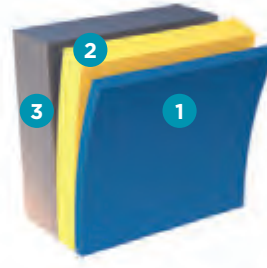
## DURACAST® TEXTURED FINISH SYSTEM\*\*

Factory-applied coating with natural aggregate matrix providing the look and feel of precast. Available exclusively for Formawall Dimension Series, Formawall Graphix Series and Versawall panels.

- 1 Acrylic and Natural Aggregate Matrix
- 2 0.8 mil [20 micron] nominal Polyester
- 3 0.2 mil [5.1 micron] nominal Primer
- 4 Substrate

## VERSACOR® ELITE

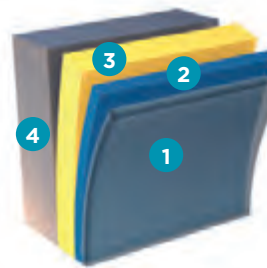
A premium, high-build, multi-layer coating for applications where corrosion and abrasion resistance is more important.



## VERSACOR® ELITE PF and MX

A premium metal coating system that provides the highest levels of protection in the harshest climatic or environmental conditions. Versacor Elite PF features a solid color PVDF Top Coat. Versacor® Elite MX has a PVDF pearlescent effect Top Coat. Both coatings are excellent for corrosive architectural applications.

- 1 0.8 mil [20.3 micron] nominal PVDF Top Coat
- 2 2.0 mil [50.8 micron] nominal Versacor Elite Barrier Coat Primer
- 3 Substrate — G-90 galvanized steel, aluminum



## VERSACOR® ELITE AM

Versacor Elite AM combines the superior corrosion resistance of the Versacor Elite Barrier Coat with a PVDF Metallic Color Coat and the extra protection of another clear coat.

- 1 0.5 mil [12.7 micron] nominal Clear Coat
- 2 0.8 mil [20.3 micron] nominal PVDF Metallic Effect Color Coat
- 3 2.0 mil [50.8 micron] nominal Versacor Elite Barrier Coat
- 4 Substrate — G-90 galvanized steel, aluminum

## WHAT IS REVERSE SIDE COATING PROTECTION?

As an added layer of protection for exterior walls, 2-mil-thick Versacor Barrier Coat with a .5 mil polyester topcoat (5913 Arctic Ice) is applied to the interior liner of the metal substrate to protect against corrosion.

## AVAILABLE SUBSTRATES

- Standard G-90 hot-dip galvanized steel conforming to ASTM A924 and ASTM A653 structural quality
- Galvalume® steel, unpainted hot-dip coated with aluminum-zinc alloy conforming to ASTM A924 and ASTM A792
- Stainless Steel\*\*, Type 304 AISI architectural grade alloy; austenitic, non-magnetic, non-glare surface; slight variation in surface finish
- Aluminum Alloy 3003 or 5052 and for standing seam roof panels, 3004\*\*, available in smooth surface as a substrate
- Galvalume steel not available with Versacor Ultra

\* Polyvinylidene Fluoride (PVDF) coat contains 70% Kynar 500 or Hylar 5000 resin. Kynar 500 is a Reg. TM of Arkema, Inc. Corporation, Hylar 5000 is a Reg. TM of Solvay Solexix, Inc. Galvalume is a Reg. TM of BIEC International, Inc.

\*\* Subject to minimum quantity requirements.

# PRODUCT FINISH AVAILABILITY

PANELS	FINISHES										SUBSTRATES			
	Fluorofinish	Duragard	Duragard Plus	Sundance Mica	Sundance AM Metallic	Duracast	Versacor Elite PF, MX, AM	Kolorshift	Allusion	Allura	G90 Galvanized	Aluminum	Stainless Steel	Zinc
FW Dimension Series	X	X	X	X	X	X	X	X	X	X	X	X <sup>1</sup>	X <sup>1</sup>	
FW Graphix Series	X	X	X	X	X	X	X	X	X	X	X	X <sup>1</sup>		
Formavue	X	X	X	X	X			X	X	X		X		
FWDS Louvers	X	X	X	X	X			X	X	X		X		
FWDS Sunshades	X	X	X	X	X			X	X	X		X		
Versapanel	X	X	X	X	X	X	X	X	X	X	X			
Versawall	X	X	X	X	X	X	X	X	X	X	X			
Intercept	X			X	X			X	X	X		X		X
FormaBond	X			X	X			X	X <sup>2</sup>			X		
FormaBond II	Standard colors for FormaBond II are from plank supplier and are not CENTRIA standard colors.													
Concept Series	X	X	X	X	X		X	X	X	X	X	X	X	X
Cascade	X	X	X	X	X		X	X	X	X	X	X	X	X
IW Series	X	X	X	X	X		X	X	X	X	X	X	X	X
EcoScreen	X	X	X	X	X					X		X	X	
BR5-36	X	X	X	X	X		X	X	X	X	X	X	X	
Econolap 1/2"	X	X	X	X	X		X	X	X	X	X	X	X	
Econolap 3/4"	X	X	X	X	X		X	X	X	X	X	X	X	
MR3-36	X	X	X	X	X		X	X	X	X	X	X	X	
Style-Rib	X	X	X	X	X		X	X	X	X	X	X	X	
Super-Rib	X	X	X	X	X		X	X	X	X	X	X		
TR4-36	X	X	X	X	X		X	X	X	X	X	X	X	
Profile Louvers	X	X	X	X	X		X	X	X	X	X			
Paradigm	X	X	X	X	X		X	X	X	X	X	X	X	X
L2	X	X	X	X	X		X	X	X	X	X			
L2-2	X	X	X	X	X		X	X	X	X	X			
L2-3	X	X	X	X	X		X	X	X	X	X			
L-21A	X	X	X	X	X		X	X	X	X	X			
ADP-100	X			X			X	X	X		X			
ADP-100B	X			X			X	X	X		X			
ADP-100C	X			X			X	X	X		X			
SDP-175	X			X	X		X	X	X		X			
SDP-200	X			X	X		X	X	X		X			
SRS 3	X	X	X	X	X		X	X	X		X	X	X	

Certain panel profiles and options may not be available in all finish and gage combinations. Contact CENTRIA for availability.

<sup>1</sup>Stainless and aluminum are available for face elements only and not liner elements.

<sup>2</sup>Max. module of 54"

# COLORS

## PRISMATIC™ SERIES COLORS—FLUOROFINISH, DURAGARD AND DURAGARD PLUS

				
179 Regal White	996 Crushed Ice	993 Off-White †	995 Cambridge White	310 Bone White
				
994 Colonial White	5012 Marble	992 Lee Ivory †	133 Sandstone	1760 Limestone †
				
142 Surrey Beige †	9910 Light Seawolf †	9911 Pebble	997 Prism Yellow	5444 Aged Copper
				
977 Moss	9933 Cypress Olive	978 Hunter Green	183 Evergreen	9932 Hartford Green
				
177 Slate Blue	9926 Arabian Blue	974 Teal Blue	9928 Cherokee Blue	200 Deep Blue Sea
			<p>Unless specified otherwise, CENTRIA will provide a standard backer coat on the reverse side of single skin panels. Color may vary.</p> <p>Polyester Arctic Ice is the standard finish offering for the interior surfaces of foam panels. Other finishes available upon request.</p> <p>† Standard Duracast finish color. Consult CENTRIA for custom colors.</p> <p>Colors shown are for preliminary selection only. Printed colors can vary from actual painted material.</p> <p>Contact CENTRIA for painted metal samples before final selection.</p> <p>NOTE: Because of the differences in the formulation and application properties of spray-applied coatings versus coil coatings, a slight color variation is likely to occur when matching coatings of these different types..</p>	
9930 Night Horizon	9923 Granite	971 Chromium Gray		
				
9917 Light Gray †	9918 Dove Gray †	9919 Fashion Gray		
				
181 Slate Gray †	9922 Steel Gray	9921 Charcoal Gray		
				
9914 Midnight Bronze	154 Dark Bronze	9916 Rich Black		
				
9912 Sage Brown	1243 Mocha	9937 Mauve		
				
156 Colonial Red	999 Aspen Gold	5913 Polyester Arctic Ice Interior Use Only		

## SUNDANCE™ SERIES COLORS

### Sundance Mica

#### 2-coat



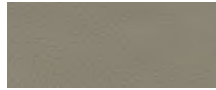
9946 Silversmith



9947 Gray Velvet



9948 Champagne Bronze



9949 Copper



9987 Bronze II



9951 Champagne Pearl



9989 Platinum



9988 Brick II



9954 Jade



9955 Blue

### Sundance AM Aluminum

#### Metallic 3-coat



9956 XL Rosalind Rose



9957 XL Silver



9958 XL Champagne Gold



9959 XL Light Bronze



9960 XL Medium Gray



9962 XL Silver Gray



9963 XL Copper Metallic



9964 XL Medium Bronze



9965 XL Dark Bronze



9967 XL Pewter

Custom colors may require an additional clear and/or barrier coat.  
Consult CENTRIA for details.

## DURACAST®



Off-White



Limestone



Lee Ivory



Surrey Beige



Light Seawolf



Dove Gray



Light Gray



Slate Gray

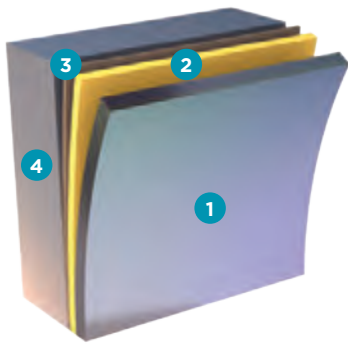
NOTE: Galvalume®, Stainless and Aluminum may not be available for all product profiles or coating systems. Consult CENTRIA sales. Galvalume offers improved heat resistance only when used unpainted.

# KOLORSHIFT™ SERIES

## Coating System

KolorShift Series takes coating innovation and design inspiration to the next level by making it possible to create metal walls that feature a continuous iridescent color gradient depending on the viewing angle or direction of sunlight.

KolorShift Series paints are formulated as a polyvinylidene fluoride (PVDF) coating system with 70% Kynar 500®/Hylar 5000® resins, which provide lasting durability. They are available with a standard 20-year warranty.



### KOLORSHIFT

An iridescent polyvinylidene (PVDF) architectural coating

- 1 0.8 mil [20 micron] nominal PVDF Color Coat
- 2 0.5 mil [12.7 micron] Polyester Base Coat
- 3 0.2 mil [5.1 micron] Polyester Primer
- 4 Substrate



Kynar 500 is a Registered Trademark of Atofina Chemicals, Inc.  
Hylar 5000 is a Registered Trademark of Solvay Solvents, Inc.

valspar

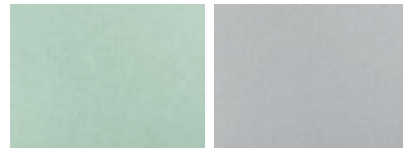
**BASE COLOR**      **FLOP COLOR**



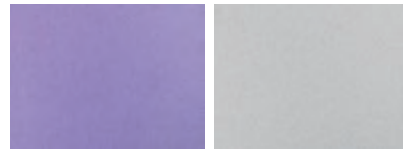
731 Hemlock



732 Dusty Rose



733 Green Shimmer



734 Purple Rain



735 Lightning Storm

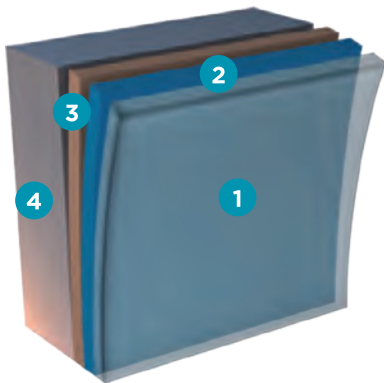
Kolorshift paints are applied by coil coating to provide consistency of color. Spray coating matches are not available. It is recommended that trim required for Kolorshift coated projects use brake-formed trim or a complimentary color in a standard PVDF for extrusions. Contact CENTRIA for availability of MicroSeam® corners with a Kolorshift finish.



# ALLUSION™

## Pre-Finished Metal Print Coating System

Using an innovative high performance print coating technology, the Allusion pre-finished decorative paint system accurately and cost-effectively simulates expensive natural finishes.



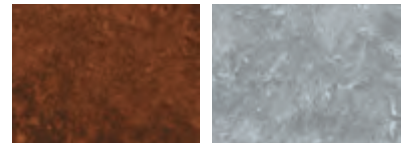
A pre-coated finish system using polyvinylidene (PVDF) print pattern colors

- 1 45 mil [11.475 micron] nominal PVDF Clear Top Coat
- 2 .05 mil nominal PVDF ink
- 3 65 mil [16.575 micron] nominal Color Base Coat (also acts as primer)
- 4 Metal Substrate



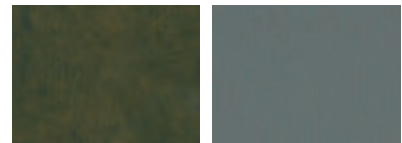
761 Light Oak

762 Dark Oak



763 Rust

764 Slate



765 Antique Bronze

766 Blue Zinc



767 Red Zinc

768 Crystal Zinc



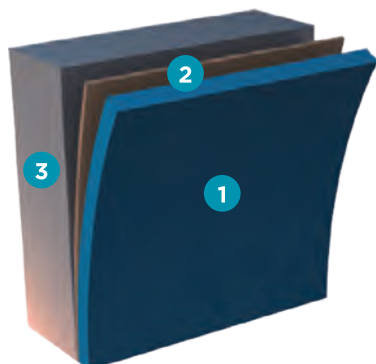
769 Green Zinc

# ALLURA™

## Coating System

Allura is a premium PVDF coating that provides an interesting aesthetic option with an innovative matte, low-gloss finish, combined with a subtle, aggregate texture for unique designs.

Allura offers excellent UV resistance and exceptional color retention, along with resistance to chalking and chemical degradation. The Terra Cotta Color Series features five earth tone colors that perfectly match the color and texture of terra cotta.



- 1 0.8 mil [20 micron] color coat
- 2 0.2 mil [5.1 micron] nominal primer
- 3 Metal Substrate



781 Adobe

782 Lava Rock



783 Sienna

784 Clay



785 Sedona

# PROJECT INDEX



Cover, Page 2-3  
**First Energy WV Operations Headquarters**  
 Fairmont, WV  
 A: The Omni Associates- Architects, Inc.  
 C: The March Westin Company, Inc.  
 D: A.C. Dellovade, Inc.



Page 9  
**FIU Academic Health Center**  
 Miami, FL  
 A: Perkins + Will  
 C: DPR Construction  
 D: Crown Corr, Inc.



Page 4  
**Caterpillar Visitors Center**  
 Peoria, IL  
 A: Dewberry  
 C: River City Construction  
 D: G&L Associates, Inc.



Page 10  
**Concept Building Illustration**  
 Graphix Series with Directional Reveals Vertical and Horizontal Pattern



Page 5  
**Wexford Health + Wellness Pavilion**  
 Wexford, PA  
 A: Astorino  
 C: Astorino  
 D: A.C. Dellovade, Inc.



Page 14  
**Erie County Medical Center**  
 Buffalo, NY  
 A: IKM, Inc. Architects and Kideney Architects  
 C: LP Ciminelli  
 D: Arrow Sheet Metal Works, Inc.



Page 6  
**University of Tennessee - Natalie L. Haslam Music Center**  
 Knoxville, TN  
 A: Barber McMurry and Blankenship Partners  
 C: Johnson Gaylon  
 D: MPS, Inc



Page 18  
**Stroh Center**  
 Bowling Green, OH  
 A: Rossetti  
 C: Mosser Construction  
 D: Crown Corr, Inc.



Page 8  
**DC Waste Water Warehouse and Visitors Center**  
 Washington D.C.  
 A: Samaha Associates  
 C: Rand Construction  
 D: MetFab a division of Drexel Metals, Inc.



Page 20  
**VA Pittsburgh Research Office Building**  
 Pittsburgh, PA  
 A: Astorino  
 C: P.J. Dick Incorporated  
 D: A.C. Dellovade, Inc.

A: Architect; C: Contractor; D: Dealer



Page 24  
**Intercept Concept Building**  
Intercept Modular Metal Panel



Page 32  
**Prairie Mechanical**  
Omaha, NB  
D: SGH, Inc.



Page 26  
**Regional Transportation Management Center**  
New Orleans, LA  
A: Sizeler Thompson Brown Architects  
C: The Shaw Group, Inc.  
D: F.L. Crane and Sons



Page 34  
**Westin Hotel**  
Birmingham, AL  
A: Rabun Architects  
C: Brasfield & Gorrie  
D: National Panel Systems



Page 28  
**Tupelo Aquatic Center**  
Tupelo, MS  
A: Johnson Bailey Henderson McNeil  
C: Murphy & Sons Construction  
D: FLC Systems



Page 36  
**Kennedy Space Center**  
Titusville, FL  
A: BRPH  
C: Whiting Turner Construction  
D: A.C. Dellovade, Inc.



Page 30  
**Lumberton Municipal Utility District Office**  
Lumberton, TX  
A: Long Architects  
C: Allco  
D: Wade Architectural Systems



Page 37  
**Stage AE**  
Pittsburgh, PA  
A: WD Partners  
C: Continental Building Systems  
D: Essig-McClure



Page 31  
**Neil Armstrong Academy**  
West Valley, UT  
A: Naylor Wentworth Lund Architects  
C: Darrell Anderson Construction  
D: Steel Encounters, Inc.



Page 39  
**CUICAR - Center for Emerging Technologies**  
Greenville, SC  
A: LS3P Neal Prince  
C: Sherman Construction  
D: Steel Clad, Inc..



Page 42  
**Renaissance Academy**  
Virginia Beach, VA  
A: RRMM Design Build  
C: W.M. Jordan Company  
D: Metal Crafters, Inc.



# CENTRIA

**CENTRIAPerformance.com**

1.800.759.7474

1005 Beaver Grade Road  
Moon Township, PA 15108-2944

Phone: 412.299.8000

Fax: 412.299.8317

Office of Business Development

Phone: 860.490.2670

Connect  
with us:



## NORTHEAST REGION

**1.800.586.1372**

Baltimore, MD  
P: 410.549.6018

F: 410.795.5984

Boston, MA  
P: 978.779.7929

F: 978.779.7930

Hartford, CT  
P: 860.659.4045

F: 860.659.4034

Newark, NJ  
P: 973.860.8804

F: 973.744.2041

New York, NY  
P&F: 914.834.7697

Philadelphia, PA  
P: 215.643.6040

F: 215.643.0629

Pittsburgh, PA  
P: 412.299.8175

F: 412.299.8016

Syracuse, NY  
P&F: 315.409.4487

Washington, DC  
P: 703.406.9588

F: 703.406.9457

## CENTRAL REGION

**1.888.745.8527**

Chicago, IL  
P&F: 262.538.4415

Cincinnati, OH  
P&F: 513.793.9160

Detroit, MI  
P: 734.516.6929

F: 734.529.7257

Indianapolis, IN  
P&F: 317.456.7920

Minneapolis, MN  
P&F: 763.577.1417

Western Michigan  
P&F: 248.486.8939

St. Louis, MO  
P: 314.432.3434

F: 314.432.6863

## SOUTHERN REGION

**1.800.586.1372**

Atlanta, GA  
P&F: 770.778.7997

Charlotte, NC  
P: 704.341.0202

F: 704.341.0204

Dallas, TX  
P: 972.422.5856

F: 972.390.9103

Greenville, SC  
P&F: 803.569.1212

Houston, TX  
P: 832.868.1634

F: 713.485.4612

Memphis, TN  
P: 901.550.0355

F: 901.861.8144

Sarasota, FL  
P&F: 941.893.3411

## WESTERN REGION

**1.888.745.8527**

Denver, CO  
P&F: 303.882.9110

Sacramento, CA  
P&F: 408.768.9595

San Francisco, CA  
P: 650.369.9400

F: 650.369.9483

Seattle, WA  
P: 253.460.3779

F: 253.460.1664

Southern California  
(Los Angeles)

P: 949.589.0997

F: 562.690.1610

Due to CENTRIA's policy of continuous improvement, we reserve the right to change, discontinue or modify our products, specifications and designs without notice and without incurring obligations.

