



SWISS  
pearl®



Swisspearl®

A Swiss pearl for the world





# Swisspearl® - reliable and valuable

## Quality & Function

Swisspearl® would not be Swisspearl® if the company did not itself meet the highest standards of quality. But it is the excellent functionality that really makes every product the springboard for great ideas. Every product line, for roofs, façades and interiors, is a modular and highly flexible system solution that is designed to protect façades and whole buildings for decades. The preservation and enhancement of value, structurally and visually, are the guiding principles that allow Swisspearl® to enliven and promote architecture and «building culture».

## Design & Aesthetics

From Max Bill to Le Corbusier and Haefeli Moser Steiger, to Herzog & de Meuron, Rafael Viñoly and Morphosis – Swisspearl® has always managed to inspire the great designers, and it shares with them the passion for producing a high-end design and exploring new possibilities.

## Sustainability & Ecology

95% of Swisspearl® is made up of natural raw materials from the Swiss mountains: cement, pulverized limestone, water and air. This ensures an effective protection of material resources, avoiding unnecessary transport distances. In fact less energy is consumed during the manufacture of Swisspearl® panels, as compared to many other building materials. Swisspearl® can be easily removed. And with a lifetime of over 40 years, Swisspearl® improves both the ecological and economical outcome of every building envelope. Or to put it another way: Only Swisspearl® is quite like Swisspearl®.

## Tradition & Innovation

Then as now. Now as in future. The timeless nature of the material and great quality have become the hallmark of Swisspearl®, something that future generations can rely on as well. When developing its products, Swisspearl® draws on its own exciting history, and examples of pioneering architecture, as well as seminal advancements in technology. This is what also makes Swisspearl® the sustainable material of tomorrow.

**Contents**

---

About Swisspearl®	8
Innovation and Competence	11
Sustainability	15
The fiber cement material	19
One material. Endless variations.	20
We are here for you	27

---





## About Swisspearl®

### A Swiss company with a great deal of tradition

For many years now, Swisspearl® has been developing innovative and sustainable products made of natural materials, in the spirit of invention and with expert skills, for use in the building envelope, the interior design and the garden – fully focused on aesthetics, quality and responsibility towards people and the environment.

The Swisspearl® products from the workshops in Niederurnen and Payerne in Switzerland have become an essential part of Swiss building culture, and have also quickly won over the rest of the (building) world. Swisspearl® works around the world with more than sixty contractual partners in over fifty countries, thereby ensuring that it is always close to its customers.

The guiding principle and driving spirit of Swisspearl® are its own high quality requirements and the will to develop and produce forward-looking, functionally and aesthetically convincing designs in an ongoing partnership with architects, designers, craftspeople and building material suppliers.

Swisspearl® - A Swiss pearl for the world.





USA Cahill Center for Astronomy and Astrophysics, Pasadena

ARCH Morphosis, Santa Monica

PHOTO Roland Halbe, Stuttgart [Germany]



SWITZERLAND Office Building, Niederurnen

ARCH Cadosch & Zimmermann, Zürich

PHOTO Jürg Zimmermann, Zürich

# Innovation and Competence

## Long term experience

Swisspearl®'s Research & Development teams have always expanded their unique expertise regarding fiber cement material technology, coloration and application of whole systems. These significant technological progresses are the backbone of the Swiss quality. Swisspearl® is the only manufacturer which has mastered the highly demanding production processes for integrally colored fiber cement panels offered in such a wide color range.

## Unique with long time proven quality

The proprietary processes pioneered by Swisspearl® with special surface finish, sealed edges and back coating ensure optimal behaviour and durability of the panels. Furthermore, Swiss authorities testify to over 40 years of functional life expectancy. Thanks to the smooth surface finish, there is minimal maintenance. Millions of panels installed throughout the world prove the outstanding, reliable long-term quality of the panel core and coating.







SLOVENIA Pilon Housing, Ljubljana

ARCH Bevk & Perovic, Ljubljana

PHOTO Miran Kambic, Radovljica

# Sustainability

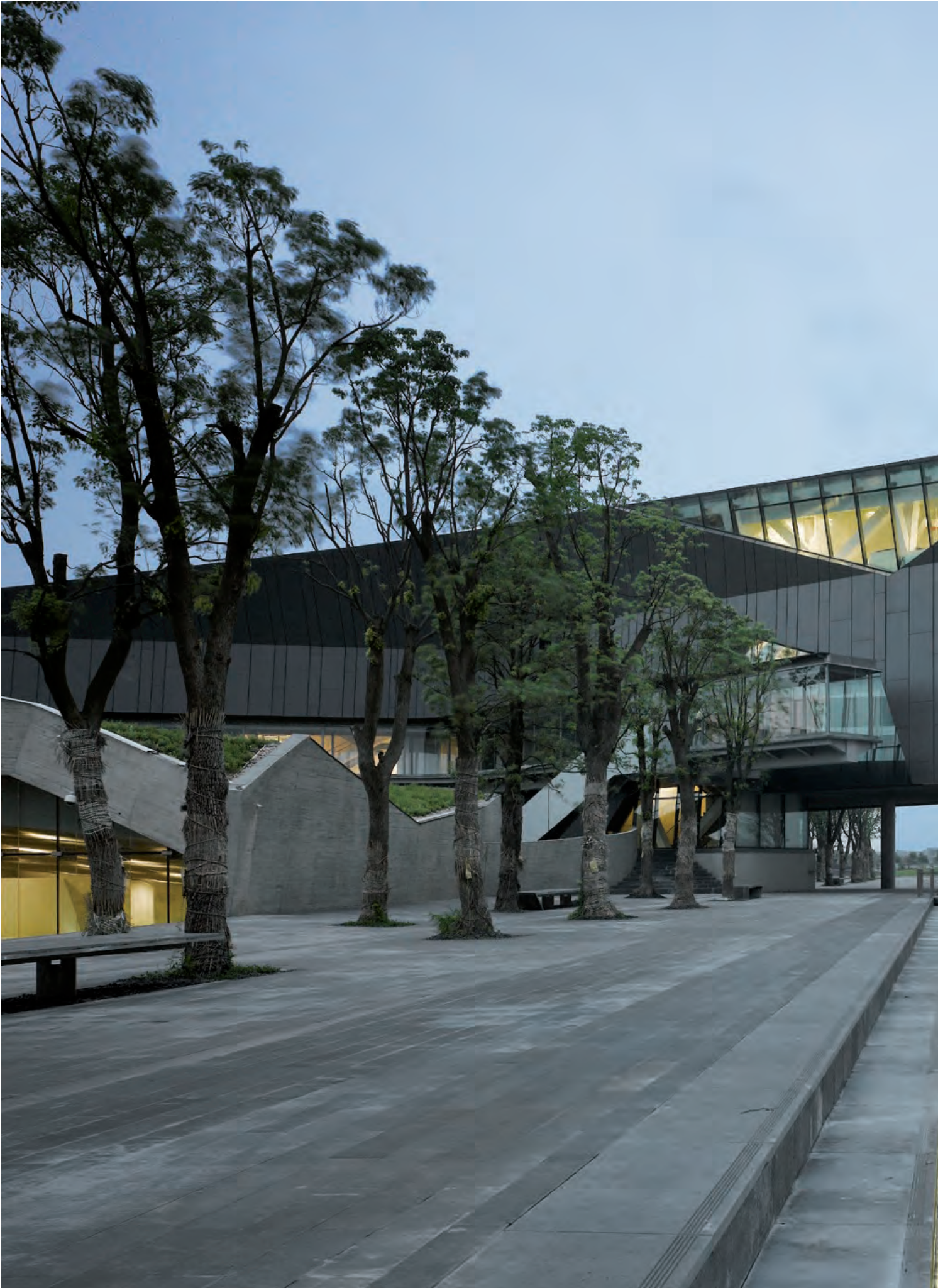
## All based on the rear ventilation system

The technological competence is matched by the most advanced know-how regarding ventilated facades, the most reliable system from the viewpoint of technical building construction. The Swisspearl® cladding system is in accordance with the ultimate technology of uninterrupted rear ventilation. This provides the key to energy conserving solutions both for winter and summer and effectively protects the building structure from the elements for a very long time.

## 100% environmentally friendly

Swisspearl® fiber cement panels are manufactured with low energy and a high level of environmental awareness. The manufacturing process based on a closed water cycle and a slow natural 28 days curing time requires little energy. Within the factory, panels are only transported by electric lifting trucks, - i.e. no colloid dust. The panels are 100 % environmentally friendly since neither the raw materials nor the production process contain any harmful substances.

Swisspearl® - A Swiss pearl for the environment.









PORTUGAL Single-family House, Parede near Lisbon

ARCH Humberto Conde, Lisbon

PHOTO Fernando Guerra, Lisbon

# The fiber cement material

## A recipe for success

Natural raw materials and a constant spirit of invention are the recipe for success of a product that has now been around for many years, which has never been out of fashion, and has in fact become an indispensable feature of architecture.

When actually handling it, the Swisspearl® fiber cement reveals its homogeneous substance, its surface quality. Visually, it presents to the eye a natural texture and the variety of hues that go with the material.

Portland cement, pulverized limestone cellulose, water and air. The Swisspearl® fiber cement is made up of 95% natural raw materials from the Swiss mountains.

The Swisspearl® fiber cement is an innovative and ecological construction material with a unique aesthetic appearance and excellent durability, which is manufactured to highest Swiss quality standards.

# One material. Endless variations.

## You will find it at many locations

The excellent properties of the material are ideal for high-quality and aesthetic façade and roof solutions, top interior architecture, through to award-winning designer buildings.



„We considered many different fiber cement panels, but none of these could match the technical characteristics of Swisspearl®, which have been quality tested in a number of impartial testing facilities. Also, the essential criterion for our client was durability, that is tensile strength and density, as well as low maintenance.“

Timo Koljonen, Linja Architects, Oulu and Helsinki, Finland







CHINA Office reception area, Beijing

ARCH JAO.Design International Architects and Planners Ltd., Beijing

PHOTO Martin Müller, Beijing



ISRAEL Archaeology Wing of the Israel Museum, West Jerusalem

ARCH Pentagram Design Ltd., London [UK]

PHOTO Asaf Kliger / Roy Rochlin, Tel Aviv









# We are here for you

## Service worldwide

The local authorized Swisspearl® distributors, our dedicated partners worldwide, are committed to our high standards regarding the professional support of the designers and our quality concept until the façade is installed. Together with the Swiss technical service, they are always available to answer any questions relating to the Swisspearl® systems and details or customised tailored solutions and colors.

Assisting designers and contractors at every stage of their project, providing the specifiers with job site mock-ups, training the installers and a comprehensive warranty also belong to the scope of the high level Swisspearl® service package aiming at added value and customer satisfaction.

Due to a very elaborate logistics concept, all orders – although only manufactured project specifically – are delivered with fairly short lead times. Mostly factory cut and predrilled, the panels ready to be installed arrive usually directly at the job site where installation will then progress rapidly.

## Product warranty

The products are manufactured to highest standards and under permanent quality control programs by third party testing facilities as well as by the factory's own laboratories.

In case that any delivered product should not reach its specified performance there will be a 10 year warranty covering the functional quality of panels and accessories. The warranty is granted on condition that the Design and Installation Manual has been fully complied with.



USA Wallis Annenberg Center for the performing arts, Beverly Hills

ARCH SPF:ARCHITECTS, Culver City

PHOTO John Edward Linden Photography, Woodland Hills

**Authorized Distributor**

