



# OUTLOOK

NEWS FROM THE WORLD OF SECO

## CDC ROYBAL EAST PARKING DECK

**INSIDE THIS ISSUE:**

**PROJECT FOCUS**

**FOCUS ON QUALITY**

**MEET MEMBERS OF OUR TEAM**



## CDC Roybal East Parking Deck Project

In late 2018, SECO's longtime customer Turner Construction Company asked SECO to be an integral part of their design-build team for a large project at the main CDC Campus in Atlanta. The centerpiece of the project was a new multi-story parking deck, but several ancillary structures were in the work scope as well. The design-development documents called for a large amount of custom metal panels both at the new deck and the other structures. By February of 2019, SECO was on-board officially with a design-assist contract.

SECO's team, led by Matthew Toon (Operations) and J.J. Derman (Sales), then took over the SECO scope and with help from our Engineering group, over the next several months or so, refined the wall panel scope from an early design-build concept to a real-life custom wall panel application and solution! By summertime of 2019, SECO was well on the way to completing submittal packages for the various material applications.

The preliminary design called for about 19,000 SF of a custom perforated aluminum plate panel system with integral supports at the new parking deck and at a new connecting walk-bridge. The design for these panels involved a custom perforation pattern in the plate aluminum, plus a panel layout that was extremely unique. There were a number of panel sizes called for, and if it wasn't complex enough, the support and attachment system had to be integrated with the panels! That is, the support system had to become a visible part of the "architecture" that the architect's vision called for. The ancillary buildings were also complex and involved aluminum composite panels, faux wood grain ceiling panels, and concealed fastener wall panels.

SECO's primary field team for this work was led by foreman



**Project:** CDC Roybal East Parking Deck  
**Location:** Atlanta, GA  
**Customer:** Turner Construction  
**SECO Sales:** J.J. Derman  
**SECO Contract Administrator:** Matthew Toon  
**SECO Foreman:** Dennie Neal  
**SECO Construction Manager:** Tony Strickland  
**SECO Field Q.C. Manager:** Travis Belew  
**SECO Crew Members:** Tommy Siler, Duane Metcalf, Paul Osborne, and Michael Taylor

Dennie Neal. Dennie was very ably assisted by his longtime crew members Tommy Siler, Duane Metcalf, Paul Osborne, and Michael Taylor. Dennie states the project was not without challenges but that his team and the Turner team worked well together. One of the greatest challenges faced by our field operation was the lack of laydown or material storage area. Since the CDC site is an operational facility that never shuts down, our crew and the crews of all other trades had to orchestrate material deliveries such that essentially, the material would come off the truck and go right up onto the building! Neal said that the material fabricators deserve a "pat on the back" because, "Everything fit just right and with just a few minor exceptions, went on the building exactly as it was designed and engineered to do."

(continued on page 3)



Altech Panel Systems fabricated the ACM systems, ATAS furnished the high-end, custom perforated aluminum plate panels, and ProFab fabricated all of the sophisticated aluminum tube supports and their related connection brackets. Everything was custom-produced in the U.S.A. just for this project and each component, including the perforated ATAS panels and tube supports, were factory-finished with custom colors. The ATAS product came from Pennsylvania, the ACM panels came from Georgia, and the supports came from South Carolina.

The Turner team included Project Executive, A.J. Bargoti, Senior Project Manager Reggie Askew, and Project Superintendents Keyaun Bolton, and Joe Stansbury. Turner assembled a good team of subcontractors for this important project, and SECO was proud to be a part of it. Bargoti tells us, "This project exemplified true collaboration and cooperation between all parties. From the owner to the architect, our team and our team of subs, were all committed to a successful project. Even though we experienced great challenges on a tough, active-operations site, all were invested in a positive outcome." When reflecting on SECO's performance, Askew added this, "The SECO team led by Matthew and Dennie were exceptional to work with. The scope of work was pretty complex, but the SECO folks were up to the task! One of the best qualities of these guys is they are proactive in their pursuit of the required scope. Heading off problems BEFORE they

become real problems is the best way to have a project run smoothly! We look forward to working again soon with SECO."

We at SECO look forward to the next Turner/SECO project collaboration as well! We have completed dozens of Turner contracts over the years, and we consider this long-term relationship invaluable! Congrats to all for a wonderful team win!



## Quality Standards + Quality People = Quality Outcomes

**H**ave you noticed that we as consumers like to give our business to companies that provide a product or service that we know ahead of time will meet a predictable level of quality? Conversely, we generally don't like to give our business to entities that provide variable levels of quality. Sometimes it's ok, sometimes it's great, but sometimes it's awful. Who wants to pay for something and then stand-by to find out what level of quality one will receive this time?

It is because of this desire for predictable quality that companies are able to charge a premium for their products yet have plenty of customers. In short, people will pay for consistent premium quality, even when there are cheaper, less predictable alternatives offered by competing companies. If this weren't the case, then companies like Chick-Fil-A, BMW, Rolex, Apple, Boar's Head, Allen Edmonds, Carhartt, Caterpillar, Timberland, Eddie Bauer, Tito's and Yeti would be producing "just another product"! These companies thrive not because they are cheap, not because they have recognizable names, but rather because they all offer high levels of predictable quality! In addition to high quality, all of these companies and many, many others are known for taking excellent care of their customers. "Customer Care" is not just a catch-phrase or a meaningless business talking point. Rather, it is a commitment to meeting or surpassing the customer's expectations before, during, and after a purchase.

What components (sale/service processes) do companies cultivate and support when they are truly committed to "Customer Care"? Let's have a look:

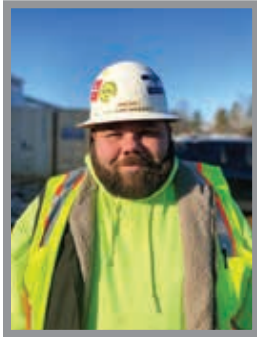
- High-quality products and/or services are readily available.
- Internal mechanisms (humans and process) are in place to adequately support the delivery of the product/services.
- Pre-Purchase human services match the quality of the products or services.
- Ease and efficiency of purchase system is in-place and apparent.
- Post-Purchase: Expedient delivery of the purchased goods or services at the agreed-upon quality level.
- Completion of the purchased obligations by the seller.
- Consistent follow-up to assure all customer's purchase expectations were met by the seller's sale obligations.

That's really it! Each one of these items could be broken down and expanded upon and whole books could be written about each one. Doesn't it look very simple? When companies struggle or fail, it is often due to one or more of these process components breaking down or perhaps they might even be missing. One of the common threads of the whole purchase/delivery process is quality. For companies that want to be successful in the long run and keep customers returning to buy as "repeat customers", they need to make sure that quality levels are stringently maintained! Quality levels cannot vary! Also, in terms of company culture, the commitment to quality must be company wide. The commitment must be placed at the top of the "importance list". It originates with management, but is carried out by all levels within the company.

(continued on page 4)



SECO certainly puts our money where our mouth is when it comes to quality. SECO is fully committed, at all levels of the company, to maintaining high, uniform levels of quality. We feel strongly that one of the major reasons we have been around for 32 years (and are working on the next 32 ☺) is that our commitment to quality doesn't vary and remains a top priority, just like it was on our first day in business!



**Travis Belew**  
**Field Quality Manager**

Augmenting our quality-oriented culture, we have a person on our staff who heads up our Field Quality Control. Our Field Quality Manager is Travis Belew. Travis, as noted in a previous issue of the SECO Outlook newsletter, has been with SECO for over 16 years! Travis has worked his way up the ranks from young laborer to field technician, to journeyman and foreman along the way to his FQM position. With this kind of real-life experience and exposure, Travis is uniquely qualified to serve in this capacity. In addition to his experience in the field, Travis has a natural keen eye for detail, precision, and quality. Travis can tell pretty quickly upon arrival on a SECO jobsite if everything is in order and up to the company's high standards. Fortunately, SECO's field team is full of skilled and experienced tradesmen. This means that Travis spends most of his time being proactive with our field teams planning project-specific strategies, training younger team members and confirming compliance with contract documents. Due to excellent talent in SECO's workforce, Travis does not find himself addressing actual field quality problems very often. It's comforting to know, however, that if anything should ever come up, Travis and his trained eye will be on duty for us, assuring that the company's quality standards are going to be met.

Travis believes that quality starts "from the bottom up." This means that the whole crew has to "buy-in" to the critical importance of maintaining quality standards. Travis says, "Our customers expect high quality when they contract with us. They expect high standards of workmanship and professionalism. It keeps them coming back to SECO instead of opting for "low bid" contractors who lack SECO's standards." Then he adds this, "Quality is a culture, a company-wide philosophy, not just a trendy buzzword!" We have noticed that our customers very much appreciate that we have a full-time Field Quality Manager. After they meet him, they know immediately that Travis is a serious man and that he takes his FQM duties extremely seriously! This no doubt, gives them great comfort.

In the end, the legacy of the company will not be established by our logo, not by our catchy by-lines or mission statements, or even pretty marketing pieces. Rather, the company's legacy will come from what our customers think of our people and the projects we have completed and left for future generations to appreciate. We firmly believe that folks will continue to bring their business to companies that provide them predictable, quality products and services. This is an axiom that never changes. For SECO, it's a formula that has worked for 32 years. We're not about to change that formula now!

## Southern Style: Georgia Southern University - Project Highlight

**S**ECO recently completed work on a large, beautiful new Engineering and Research building on the campus of Georgia Southern University in Statesboro, GA. Our good customer JE Dunn in Savannah knew that this large, complex structure was going to present a good number of challenges to build, not the least of which was the exterior skin. The architect, Stevens and Wilkinson from Atlanta, designed a very impressive structure which is anything but ordinary. The building is not just large in terms of square footage, it is also quite tall. The canted roofs soar into the air on the west and east sides of the building. These two large roof structures oppose each other and are separated by a "catwalk" feature. The catwalk is not an actual catwalk, but it is a flat roof area with a clerestory to the east and a soaring metal panel wall to the west.



(continued on page 5)



Accessing these walls from the roof below required a custom-engineered rolling scaffold that stood nearly 40 feet tall above the flat roof! The project was so large that there was approximately 60,000 SF of metal wall panel material on the building façade.

Altech Panel Systems manufactured about 20,000 SF of aluminum composite panels for the project, while Centria furnished about 40,000 SF of profiled metal panels in three (3) different profiles. This included a good bit of flat panel material at the roof overhang soffits. The SECO field effort on this great project was led by Chris Bramlett's team of Cory Norton, Jamie Maxwell, Stephen Bolmon, and Andtravious Montgomery. These gents carried the SECO banner throughout the project and did an excellent job! The materials were installed, as they always are, in a first-class, high-quality way! Also as always, they did the work in a very safe manner as there were zero safety incidents during this very demanding project. Chris and his team emphasize safety daily, as do all of our SECO field personnel, which helps keep our industry-leading EMR rating very low! (EMR is how the insurance industry rates the risk of the contractors they underwrite). The lower the EMR, the lower the risk of that contractor being involved in an adverse safety incident!

Our crew was specifically recognized for safe, quality work when Project Engineer Dylan Aldridge, from JE Dunn stated, "I would say that the experience I had working with SECO's field staff was one of the more enjoyable ones that I have had. Their knowledge of materials and installation methods led to high-quality work. Especially when it came to the outstanding coordination between SECO's scope and the work of other trades." How nice of Mr. Aldridge to offer this high praise for SECO's team! We very much appreciate his kind words!

This project is another example of modern designers who utilize a variety of materials, textures, and colors to enclose the buildings they design. There's an extensive use of masonry, glass, aluminum composite panels, flat metal panels, ribbed metal panels, and standing seam roof panels on the exterior. In addition, there are large roof overhangs and several "eyebrow" and canopy features, which add even more interest to the exterior appearance of the building.

All who have seen the final building come away with the universal perception that the new Engineering and Research building is a gorgeous addition to the GSU Campus!



## In The Spotlight... Foreman Austin Canup

**W**e'd like to take a minute to introduce you to one of the young foremen on our field team. He hasn't been a foreman for a great deal of time, having been promoted from a "lead man" to foreman about 2 years ago in January 2019, but he already appears to be a wise veteran!

Austin Canup has been on the SECO team since 2013 and has shown his leadership skills ever since. In addition to a natural ability to lead, Austin has a good eye for quality. Perhaps most importantly, our customers enjoy working with Austin and respect his ability to run a first-quality project! "Sachin Arunkumar, Senior Project Manager on the recently completed 788 West Midtown project in Atlanta, said this about Austin, "It was a pleasure working with Austin. He has a "can do" attitude when so many contractors have a "can't do" attitude. He knows his job and gets right to it. He worked very well with the other trades and is an excellent problem solver."

Born in North Georgia in Royston, Austin now lives in close by Eastanolle, GA, between the big cities of Lavonia and Toccoa. ☺ Austin grew up in Franklin County, GA, and was a fighting Lion at Franklin County High School. Austin has come a long way since he was washing trucks at the Blue Beacon truck stop years ago! Austin is married to Jannah, and together they have a handsome young two-year-old named, Wesley. Wesley is a

precious little guy and is talking more and more each day! There's another little one in the house who goes by the name "Kujo". Kujo is the family Dachshund who has the run of the place, according to Austin. ☺ When Austin is away from home on a SECO jobsite, his "family" is Cory Hunter, Matthew Bentley, and Donnie Lowery. These guys form a great team, and they work extremely well together!

As much as Austin enjoys his job and his fellow SECO employees, his favorite past time is spending time with Wesley and Jannah. In fact, Austin states proudly that "becoming a dad" is the most exciting thing that has happened in his lifetime! Austin is guided by this motto; "If you ain't first, chances are you're gonna be last!"

Thanks for all you do, Austin. We are all proud to call you an important part of the SECO team!



Austin, Jannah and Wesley



# SECO



Brian - Model Citizen!



Randy, Billy, and David



ATAS Visit



Celebrating 30 years with the SECO family!  
The Landress family:  
Linda, John, Cecil, and Brixton



Crazy Hat Day



Randy, Alex, and Fish



"Raceway" & Jamie



Noah, Billy and Sam



# FACES



Corey, Tim, and Bart



Jason, Matthew, Mel, and Sam



Stephen



Dennie Neal's Crew: Tony, Michael, Duane, Dennie



SECO's People Sponsor Lekotek of Georgia



Chris Bramlett in Disguise



Safety Director, Steve Helms



Chris, Cory, Jamie, Andtravious, and Steven



## A “Model” for Success

It is hard to deny that our lives get more complex as each week, month and year passes. It is virtually impossible to “live a simple life” anymore and life is not getting any more simple as we move into the future! This is true in our personal lives as well as in our professional lives.

It wasn't all that long ago when engineers in our business used slide rules to perform complex calculations and utilized items like T-squares, triangles, and pencils to draw building projects on actual paper! Those drawings were often reproduced as “blueprints” and distributed as rolls of physical paper drawings. Architects and engineers used to draw their project designs also with the same “technology” of the time. Our company used to keep traditional print shops in business by having them print and distribute thousands and thousands of pages of printed drawings and documents. These rolls of drawings could often be several hundred pages and weigh a hundred pounds or more! We built buildings, but we couldn't do our jobs without paper and lots of it!

That all began to change in the early 80's when Autodesk introduced AutoCAD for the growing P.C. based marketplace. CAD means Computer-Aided Design, CADD means Computer-Aided Design and Drafting. AutoCAD is the trademark name for Autodesk's drawing software that much of the construction world and world of architecture first utilized as the industry moved away from a paper-based document industry to an electronic-based document industry. The software started out as a 2-dimensional tool but has evolved into a 3-dimensional drawing tool. Almost everything we draw these days is drawn in 3-D or is convertible into 3-D from 2-D. There are a myriad of 3-D software programs available these days such as Solidworks by Dassault Systems, Revit (an Autodesk product acquired in 2002), Inventor (another Autodesk product), Rhinoceros 3D by Robert McNeel & Associates, Sketchup by Trimble, Inc., and many, many others.

There is new software coming online all the time! What is new and improved today, will quite literally change by tomorrow! SECO has, of course, had to change and adapt over the years as technology has changed. No company in 2021 could survive drawing the old-fashioned way! SECO is very fortunate to have a number of talented individuals on-board in our engineering department. These folks are all well versed in current technology and are all tuned in to advancing technology. Our world is a 3-D world now and we need to be right there in the same 3-D world as everyone else if we expect to continue to run a healthy business. With the advent of BIM (Building Information Modeling), all companies that operate in the world of construction are working with electronic building models.

Architects design with models, engineers design with models, contractors plan their projects and build them with models, and subcontractors like SECO use models created by others and models created by our own team. That's right, with our state-of-the-art digital scanning equipment, we are able to go to our jobsites and perform digital scanning. We can measure almost any part of a building, or even the whole building, by electronically measuring the building with thousands or millions of electronic “readings”. These “readings” or digital data form a “point cloud”. This point cloud, by way of very sophisticated software, is then registered into a usable, extremely accurate electronic model. This model, incredibly, contains the real-life exact dimensions of the physical building or building area that was scanned. This modeling capability gives us a tremendous advantage over competitors who haven't advanced as quickly or as far as SECO.

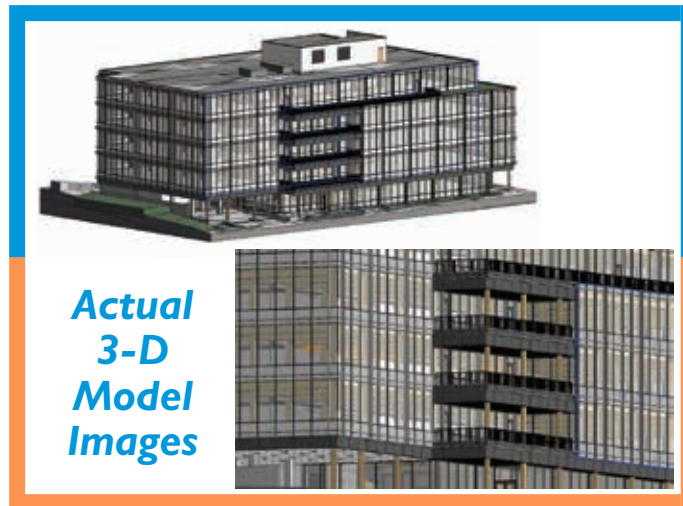
Our Engineering team, led by Matthew Toon, is very talented, very experienced, and very current on technology. Matthew feels the key to having a successful engineering department is having energetic, smart people who can both see and think in three-dimensions. He says that having team members who actually understand how buildings go together and how trades/materials are sequenced on real-life projects is hyper-critical. Having individuals who understand computers and programs but don't understand how to build would lead to problems by the time our work in the field is ready to happen. He

says details that work on paper often will not work in actual field conditions. “Our folks draw in 3-D but they need to think in 3-D as well!”

Toon adds that staying current with ever-advancing technology (hardware and software) is vital to long-term success. Complacency will cause a company to fail or fall behind at the very least. Toon is committed to a staff that never stops advancing. “We can't stop or rest as the engineering world is changing at a hyper-fast pace. As buildings become more complex, our folks need to be very creative as the details and product applications are likewise becoming more complex”.

Solving problems is what SECO Contracting's Engineering group does best. Toon adds “We love matching up the designer's intent to our workscope. We are a collective group of creative, detail-oriented folks. We are imaginative, yes indeed, however we are also practical people who understand what it takes to build in the modern world. After all, we are engineers!”

SECO is committed to providing high-quality engineering solutions to our customers. We have been since our inception, and we will continue to be committed!





## Meet SECO Contracting's Engineering Group



### ENGINEERING DIRECTOR - MATTHEW TOON

Time with SECO: 4 years

Family: Proud father of 8-year-old German Shepherd, Arelli

Person (Alive or not) that I admire the most: My Two Grandmothers

If I wasn't an engineer, I'd be a: Firearms Instructor

Which best describes you? Manager ☐ Coach ☒ Player ☒

### ENGINEERING MANAGER - CECIL LANDRESS

Time with SECO: 30 years

Family: Wife - Linda (Married 44 years); Son - John; Grandson-Brixton

Person (Alive or not) that I admire the most: Lord Jesus (Who is Alive)

If I wasn't an engineer, I'd be a: Chef

Which best describes you? Manager ☐ Coach ☒ Player ☒



### SENIOR ENGINEER - RICH MCCONNAUGHY

Time with SECO: 18 years

Family: Wife - Sandy (Married 52 years); Sons - Jason & Ryan; Grandchildren - Colt & Riley

Person (Alive or not) that I admire the most: Bill Gates (business) & Larry David (comedy)

If I wasn't an engineer, I'd be an: Artist or Drummer

Which best describes you? Manager ☐ Coach ☒ Player ☒

### ENGINEER - PAUL BOTT

Time with SECO: 3 years

Family: Wife - Suzanne (Married 8 years); Sons - James & Matthew

Person (Alive or not) that I admire the most: My Father

If I wasn't an engineer, I'd be a: Police Officer

Which best describes you? Manager ☐ Coach ☒ Player ☒



### ENGINEER - TUAN NGUYEN

Time with SECO: 1 year

Family: Wife - Loan (Married 22 years); Sons - Hung & Ouoe Khanh; Daughter - Ngoc Khanh

Person (Alive or not) that I admire the most: Benjamin Franklin

If I wasn't an engineer, I'd be a: Truck Driver

Which best describes you? Manager ☐ Coach ☐ Player ☒

### DIGITAL SCANNING TECHNICIAN - ERIC DUSTIN

Time with SECO: Short time!

Family: Jessica (Married 3 years); Son - Ryland James; Expecting - A Girl!

Person (Alive or not) that I admire the most: Father

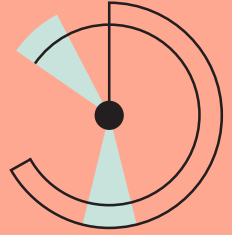
If I wasn't an engineer, I'd be a: Comedian

Which best describes you? Manager ☒ Coach ☒ Player ☒

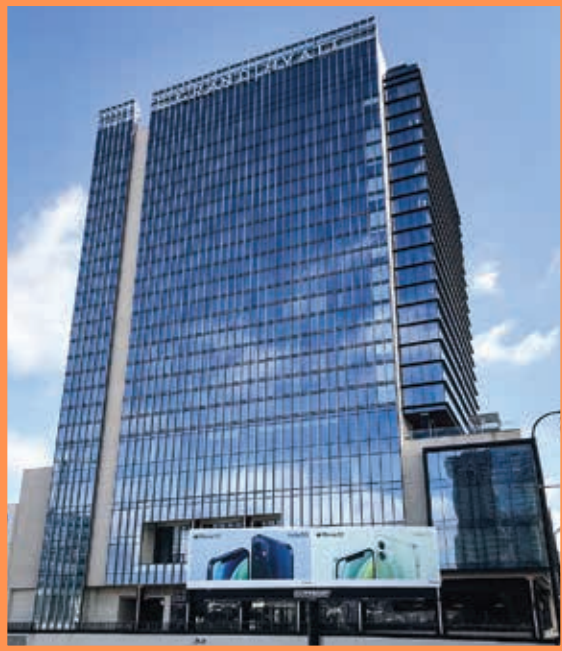




**S**ECO Contracting remains busy all over the territory putting up wall systems on schools, college classrooms, hotels, hospitals, utility plants, and laboratory research buildings. As always, we extend a huge “thank you” to our customers who continue to award us contract work for their important projects! The customers of our customers, by extension, become our customers too! We are always out to reward them for the confidence they have in SECO’s people! Here’s what some of our “best people” have been up to:



## HYATT HOTEL— NASHVILLE, TN



**Mitchell Terry** and his crew of **Bart King**, **Tim Fain**, and **Corey Ashe** have just put the final wraps on some change order work at the beautiful new Hyatt Hotel in downtown Nashville. Our customer, Clark/Bell-JV, is very pleased with SECO’s performance, especially given the project’s urban setting and the difficulties of work-area access that are inherent in city projects!

## FOUNTAIN INN HIGH SCHOOL— FOUNTAIN INN, SC



Fountain Inn High School is an enormous new school going up in Fountain Inn, SC not far from Greenville. Harper General Contractors, SECO’s longtime great customer based in Greenville, awarded SECO this large and complex project simply because their team, headed by Senior PM David Fey, knew that SECO could handle it. Our response to the award was, of course, deep gratitude and appreciation. When the project was launched internally, our team collectively pledged, “We got this!” The field force that “has this” in hand is led by the incomparable **Deno Brown**, who is very capably assisted by **Mac Brown**, **Billy Overton**, **Randy Henson**, and **Noah Mays**. These gentlemen are up to their usual excellent work. Forget the Postal Service, these guys do difficult, challenging, pressure-packed work in the rain, mud, ice, and cold, and they do it



safely! Mr. Fey summed up our efforts well when he said, “We brought SECO on simply because we knew they would do things right!” Excellent work, SECO team!



## THYSSEN-KRUPP ELEVATOR TOWER TEST FACILITY & INNOVATION CENTER

### ATLANTA, GA

SECO's team is working away, heading toward completion of the highly visible Thyssen-Krupp Elevator Tower Test Facility and Innovation Center going up at the Battery beside Truist Park (home of the Atlanta Braves). This project sits right where I-75, Cobb Parkway, and I-285 all meet and is visible in all directions



for miles! Our contract with our outstanding customer, Brasfield and Gorrie, calls for SECO to furnish and install about 25,000 SF of Altech's aluminum composite panel system, about 11,000 SF of Centria's Versawall insulated wall panels, another 11,000 SF of Centria's MetalWrap insulated back-up panels, and finally, about

2,500 SF of Centria's EcoScreen perforated panels. The field team, headed up by **Chris Bramlett**, is doing a great job on another challenging, tight site with very little room for access and material storage. Chris' team includes **Cory Norton, Stephen Bolmon, Andtravious Montgomery, and Jamie Maxwell**. The project is coming along very well, and because of the visibility of the project, it's a great advertisement for SECO and our talented field folks. If you find yourself traveling through the northwest side of Atlanta anytime soon or even attending a post-Covid Braves game, take a minute to behold this very special project.



## BIRMINGHAM-JEFFERSON CONVENTION COMPLEX (BJCC)

### BIRMINGHAM, AL

To the west in Alabama, SECO is well underway with our workscope at the very large BJCC addition and renovation project. Our longtime Birmingham-based customer, B.L. Harbert Construction Company, brought SECO on-board early so that we could help the design and construction team make final material selection decisions and to hone in on the exterior skin package pricing.



To say that the existing BJCC is getting a facelift is a major understatement! The entire envelope is getting a new, modernized exterior, and the changes are substantial! Our work involves about 10,000 SF

of Centria's vertically applied Dimension Series insulated panels and another 6,000 SF of Dimension Series panels that will be installed horizontally. In addition to these materials, we will furnish and install approximately 22,000 SF of insulated European rainscreen panels. (13,000 SF of Trespa and 9000 SF of Prodema high-pressure laminated (HPL) panels).



Our field effort is being led by one of our most experienced foremen, **Dennie Neal**. Dennie's usual excellent team of **Tom Siler, Duane Metcalf, Paul Osborne, and Michael Taylor** are all doing their customary amazing work and giving our customer and the designer exactly what they expected from us. That is, all of their expectations about quality, schedule, trade teamwork, and safety are being delivered because they have the best from SECO!



## BROOKWOOD BAPTIST HOSPITAL

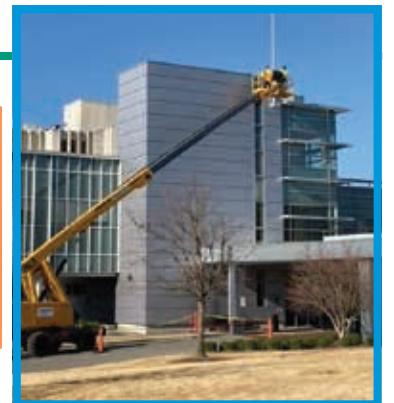
### BIRMINGHAM, AL

Also in Birmingham, **Austin Canup** leads his team on an interesting hospital project at Brookwood Baptist Hospital. The owner has decided to re-do and renovate the primary building entrance façade. In order to create the "new look,"



our guys are taking panels down, installing new panels, and even re-installing some of the removed panels. Austin's group includes **Cory Hunter, Donnie Lowery, and Matthew Bentley**. Together they are an

awesome team, and they make us proud!





### LAURENS COUNTY WATER TREATMENT PLANT— WATERLOO, SC



Harper General Contractors awarded SECO the insulated metal wall panel scope at the new administration building for the Laurens County Water Treatment facility in Waterloo, SC. The workscope involves a good amount of Centria's vertically applied Versawall panels. The panels are a nice, sharp complement to the masonry building base. The name "Water Treatment Building" is a little misleading as this is really a nice, architectural project in the midst of a very industrial site!



**Bob Henry** and **Steve Ayers** led our field efforts along with **Barry Williams**, **Eric Williams**, and **Brett Perkins**. Our guys represent us so well when they are on the jobsites of our customers. They wear the SECO colors with pride, and in turn, we are very proud of them!

### KSU ACADEMIC LEARNING CENTER— KENNESAW, GA

This building will soon grace Kennesaw State University's campus, just up I-75, a stone's throw from Atlanta. This is another important State of Georgia funded project going up on the ever-growing KSU campus! Brasfield and Gorrie's team made the decision to team up with SECO, as the metal panel exterior is such an important part of the building and is so critical, it could make or break the project. To guarantee a "make" and not a "break", some of SECO's best resources are assigned to this project. **Eric Nelson** leads the way out there, and he is very capably assisted by **Eric Auman**, **Carlos Hernandez**, **Alex Lizama**, and **Hermas Ramos**.



Our guys initially took on the high work on the project since it was ready well before our work on the lower floors. Up on the roof we are installing about 9,000 SF of Centria's

Concealed Fastener Concept Series panels. Most of this material is insulated, but some panels are applied to large screens, which conceal some large rooftop mechanical equipment. In the near future, our folks will be installing about 3,200 SF of Altech Panel System's new aluminum plate system. When complete, this will be another in an ever-growing long list of successful Brasfield and Gorrie/SECO collaborations. The SECO team loves being a part of the B&G team!



### A PAT ON THE BACK

We also want to give a shout-out to **Tony Strickland**, **Sam Mooney**, **Steve Helms**, and **Travis Belew**. These experienced gentlemen, all former field foremen, do a lot of behind-the-scenes things to keep our field teams operating efficiently and safely. Without them, our field operations would be a lot less effective. These guys do an excellent job of helping SECO meet our contractual obligations!



# Upcoming SECO Contracting Projects:

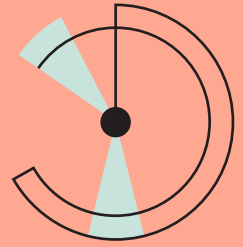
## PROJECT

Bethel-Hanberry Elementary School  
Metrolina Building #6  
Davis Drive Tower  
Summit Drive Elementary School  
1030 Music Row  
University of TN-EESRB

Blythewood, SC  
Charlotte, NC  
Durham, NC  
Greenville, SC  
Nashville, TN  
Knoxville, TN

## CUSTOMER

Harper Construction Company  
Edifice Construction Company  
Brinn Glass, Inc.  
Harper Construction Company  
Turner Construction Company  
Christman Company



## The Lighter Side

### QUESTIONS:

- Did you hear about the new hire that tried to cash his background check?
- Why did the new laborer spray paint his boots green? *He heard that steel "toad" boots were required.*
- Then there was the new guy that heard about the importance of fall protection. *He asked the foreman if winter protection was also important!*
- What does one call a building that has been framed perfectly level, plumb, and true? *Imaginary!*
- Why does each project make reference to "ground level" when the ground is almost never level??
- When the foreman needed more help on his crew, why did he go to the hospital's maternity department? *He heard there was a bunch of laborers there!*
- If the man in charge on a jobsite is the "superintendent," doesn't it seem that there should also be "intendents" on site? *Who and what are "intendents," and why is the site boss a "Super" version of one?*



### WHAT AM I?

1. I don't have a lot to say and I stay pretty quiet, I generally let people walk all over me, I don't move around much and I spend most of my time just hanging around. I don't have much of an ego, yet I look down on most folks on a jobsite. I am not emotional, but if you pull my chain, I will react. I get along well with all trades and don't favor one vs. another. I offer some breathtaking views, and I charge nothing extra to provide them. I get high every day, but I use no drugs. *What am I?*
2. I can make non-plumb walls plumb, I can make unlevel things level, I can erase poor construction tolerances, I am usually covered up where I am not visible, I am lightweight, and I don't cost very much. There are many of us on an average building, yet we'll never make a magazine cover. *What am I?*
3. How are tall buildings like grandparents, favorite uncles and aunts, and fishermen?

### QUESTION:

3. How are tall buildings like grandparents, favorite uncles and aunts, and fishermen?

3. They usually have a lot of stories!

2. A Shim

1. A Swingsstage Scaffold

Answers:

## COVID-19 Reminder

Let's please continue to follow the safety advice of wearing masks in public settings, social distancing, washing hands frequently, and, if possible, get vaccinated. (Be sure to consult your personal physician before making the decision to be vaccinated.)

Let's please be Safe for our families and co-workers.



# What is a Health Savings Account and What are the Benefits?

by Dianna Mitchell

A Health Savings Account (HSA) is a type of personal savings account you can set up to pay certain health care costs. An HSA allows you to put money away and withdraw it tax-free if you use it for a qualified medical expense(s).

## Who is eligible for an HSA?

- Anyone who is covered by a High Deductible Health Plan (HDHP).
- Anyone not covered under another medical plan that is not a HDHP.
- Anyone who is not enrolled in Medicare benefits.
- Anyone who is not eligible to be claimed on another person's tax return.

## Are there limits on HSA Contributions?

Limits on HSA Contributions		
	2021	
	Self-only coverage	Family coverage
HSA contribution limits per year	\$3600	\$7200
HSA "catch-up" contributions (55 or older) per year	\$1000	

## What are the benefits of an HSA?

- Save on taxes – Pay no taxes on the money you put into your HSA, meaning your contribution lowers your taxable income so you pay less in taxes. For example:
  - Your tax bracket: 15%
  - Your HSA Contribution: \$100/month (\$1200/year)
  - You save: \$180 year in taxes (15% of \$1200 = \$180)
- Use it to pay current medical expense or save for future medical expenses.
- The funds you contribute to your HSA are yours regardless of a change of coverage or employment.
- Your balance will carry over from year to year.
- You can use your HSA funds for medical, dental and vision expenses for yourself and family even if they are not covered by the plan.
- HSA funds can be used for premiums such as long-term care insurance, health insurance when unemployed, health insurance under COBRA, and certain premiums after age 65.
- You can withdraw money tax-free if used for qualified medical expenses as permitted under federal law. However, HSA distributions used for non-qualified medical expense are subject to income tax. If taken before age 65, a 20% IRS penalty tax will apply unless withdrawn due to death or disability.
- In the event of death, the account can transfer to your spouse tax-free; non-spouse beneficiaries will be taxed at their regular income tax rate.
- When your account reaches a certain balance, you can invest your unused funds for further growth.
- For a full list of eligible expenses, please visit [www.irs.gov](http://www.irs.gov)
- Contact Dianna in the main office if you'd like to take advantage of the HSA program.



## PURCHASING CORNER

Annette Miller, SECO's Purchasing Manager, recently mentioned that she wanted to send out some Do's and Don'ts to our field folks regarding rental equipment. We thought we'd go ahead and publish her memo in the newsletter as it is good information for all of us. There's some great advice here! Thanks, Annette!

### Equipment Rental: THE DO'S AND DON'TS

#### DO'S

- ☑ Check equipment thoroughly when it arrives on site.
- ☑ Please take pictures of any pre-damage on equipment so we can keep them on file.
- ☑ Immediately let Purchasing (Annette) know if the equipment has any mechanical issues or bad tires.
- ☑ Keep track of fuel and keys for the equipment. Keep them safe and secure.
- ☑ Always have PPE on AND BE AWARE OF YOUR SURROUNDINGS, at all times!
- ☑ Take good care of the equipment while renting. Remember, it does not belong to our company!

#### DON'TS

- ✗ Never share equipment with other trades as this is a liability issue for SECO.
- ✗ Lose the keys for equipment rental. (see left)
- ✗ Operate equipment when fuel is low or on empty.
- ✗ Enter jobsite without proper PPE.
- ✗ Forget you have a family to come home to, therefore, put SAFETY FIRST!



*Annette Miller*  
Annette Miller  
SECO's Purchasing Manager

## SECO Employment Anniversaries

#### 0-5 YEARS

Joshua Rush  
Eric Dustin  
Robert Smith  
Andrew Libby  
Corey Ashe  
Joshua Mathis  
Anthony Erovick  
Eric Auman  
Noah Mays  
Carlos Hernandez  
Alicia Jones  
Hermas De Leon Ramos  
Mac Brown  
Antonio Matos  
Brian Adams  
Brandon Bryant  
Eric Williams  
Walter Houston  
Nathan Wacker  
Matthew Bentley  
Andy Woodall

William Blasdell  
Seth Rogers  
Jermaine Jackson  
Raymond Davis  
David Allen  
Anthony Timm  
Michael Quijano  
Willie Johnson  
Barry Williams  
Stephen Bolmon  
John Welborn  
Travis Fricks  
Eric Nelson  
David Cake  
Kenwain Dragg  
Tuan Nguyen  
Chris Ward  
Antwaun Waters  
Andravenous Montgomery  
Felicia Shellhouse  
Kelton Nesbitt  
Chris Lockhart

Brian Dellinger  
Paul Bott  
Annette Miller  
Andrew Edenfield  
Jamie Maxwell  
Dallas Roberts  
Paul Roberts  
Bob Brake  
Cory Norton  
Matthew Toon  
Richard Ross  
Justin Spires  
Jill Green  
Jeffrey Campbell  
Whitney Classey  
James Taylor  
Timothy Lemmons  
**6 TO 10 YEARS**  
Donnie Lowery  
Billy Overton  
Cory Hunter

Denise McClure  
Billy Carter  
Chris Bramlett  
Austin Canup  
Bob Murphy  
JJ Derman  
David Brown  
Edward Kinton  
Randy Henson  
Dennie Neal  
Bob Moore  
Deno Brown  
Doug McIntyre  
Robert Henry  
Tony Wilson  
Jefferson Fain  
**11 TO 15 YEARS**  
Larry Roach  
Chris Stephens  
Alex Perkins  
Duane Metcalf

Craig Wren  
Ed Phillips  
Sam Mooney  
Steve Ayers  
Tommy Siler  
Tony Strickland  
Dianna Mitchell  
Bobby Stanfill

#### 16 TO 25 YEARS

Jacoby Dragg  
Travis Belew  
Jason Cooke  
Mitchell Terry  
Joe Creighton

#### 26 TO 30+ YEARS

Paul Osborne  
Bart King  
Cecil Landress



## ATLANTA PEDESTRIAN BRIDGES HARTSFIELD-JACKSON AIRPORT

ATLANTA, GA



## CAROLINA PREMIUM BEVERAGE

CONCORD, NC



## 788 WEST MIDTOWN

ATLANTA, GA



**41**  
VOLUME

SECO is celebrating 32 years in business!

